



Document 2017 103

Book 2017 Page 103 Type 06 043 Pages 1

Date 1/10/2017 Time 10:40:10AM

Rec Amt \$7.00

INDX
ANNO
SCAN

LISA SMITH, COUNTY RECORDER
MADISON COUNTY IOWA

CHEK

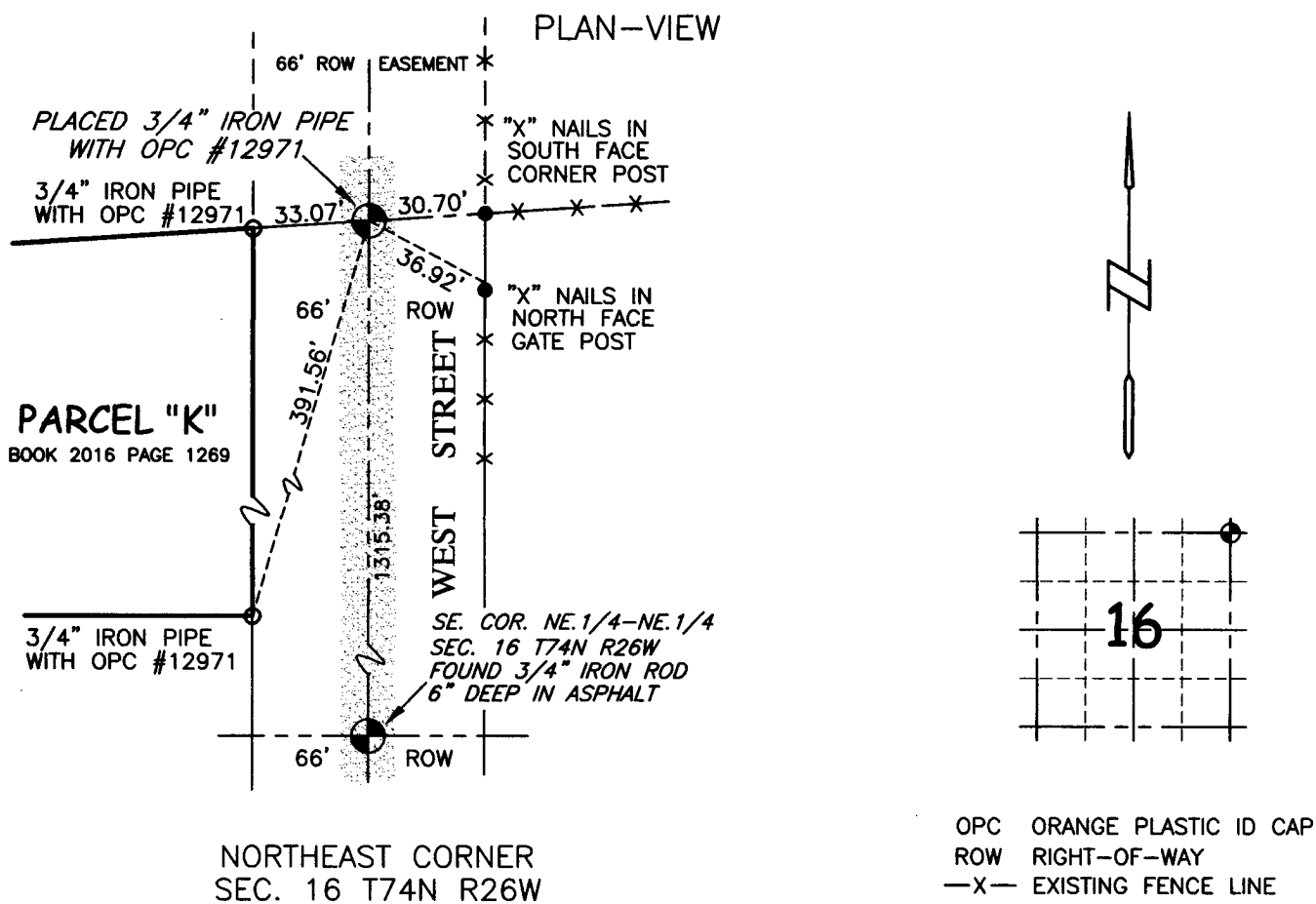
PREPARED BY AND RETURN TO: JOEL R. ROMNEY 33235 L AVENUE ADEL IOWA 50003 PH: 515.493.8317

UNITED STATES PUBLIC LAND SURVEY CORNER CERTIFICATE OF

Land Survey Monuments situated in Sections 16, Township 74N, Range 26W, of the Fifth Principal Meridian, MADISON County, Iowa. Previously recorded in Book and Page as noted below if applicable.
Monument Description and Remarks:

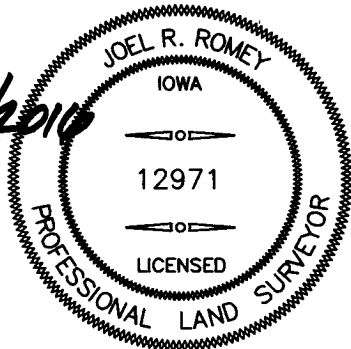
NO MONUMENT FOUND AT LOCATION SHOWN ON COUNTY ENGINEER TIES J-13. COUNTY TIES NOTE A "FOUND NAIL 3" DEEP AT LOCATION. NO MONUMENT FOUND AT PERSCRIBED LOCATION. TIES DESTROYED OR NOT FOUND.

RE-ESTABLISHED FROM FENCE LINES EAST AND WEST AND FROM DISTANCES TO EXISTING SURVEY MONUMENTS SOUTH. PLACED 3/4 INCH IRON PIPE WITH ORANGE PLASTIC ID CAP #12971.



I hereby certify that the survey work was completed and this certificate was prepared by me or under my direct personal supervision and that I am a duly licensed professional land surveyor under the laws of the state of Iowa.

J.R. Romney 12/19/2016
License Renewal Date:
31 Dec. 2017



List Corners to be indexed

Corners	Sec.	Twp	Rng
NORTHEAST CORNER	16	74	26
SOUTHEAST CORNER	9	74	26
SOUTHWEST CORNER	10	74	26
NORTHWEST CORNER	15	74	26