



Document 2016 4023

Book 2016 Page 4023 Type 06 043 Pages 1  
Date 12/29/2016 Time 10:04:11AM  
Rec Amt \$7.00

INDX  
ANNO  
SCAN  
CHEK

LISA SMITH, COUNTY RECORDER  
MADISON COUNTY IOWA

PREPARED BY & RETURN TO ERIN GRIFFIN, SNYDER & ASSOCIATES, INC. 2727 SW SNYDER ROAD, ANKENY, IOWA 50023 (515) 964-2020

### UNITED STATES PUBLIC LAND SURVEY CORNER CERTIFICATE OF

Land Survey Monuments situated in Section 10, Township 77N, Range 26W, of the Fifth Principal Meridian, MADISON, County, Iowa. Previously recorded in N/A in County Recorder's Office.

(book, page, document number, ect.)

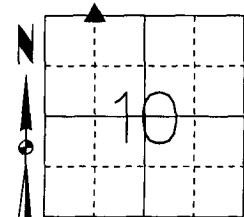
(Show reason for preparing this certificate, the evidence and detailed procedures used in establishing the corner positions and monumentation found or placed.)

#### Monument Description and Remarks:

NORTHWEST CORNER NE1/4 NW1/4 SECTION 10-77-26  
NO PREVIOUS RECORD OF MONUMENTATION WAS FOUND. A VISUAL SEARCH ALONG WITH METAL DETECTOR WAS USED TO FIND NOTHING. A CORNER POST WAS FOUND AND HELD AS SECTION CORNER. SET NAIL IN TOP OF CORNER POST WITH YELLOW PLASTIC CAP #19710. THIS CERTIFICATE IS BEING FILED BECAUSE THERE IS NO CERTIFICATE FOR THE CORNER ON FILE.

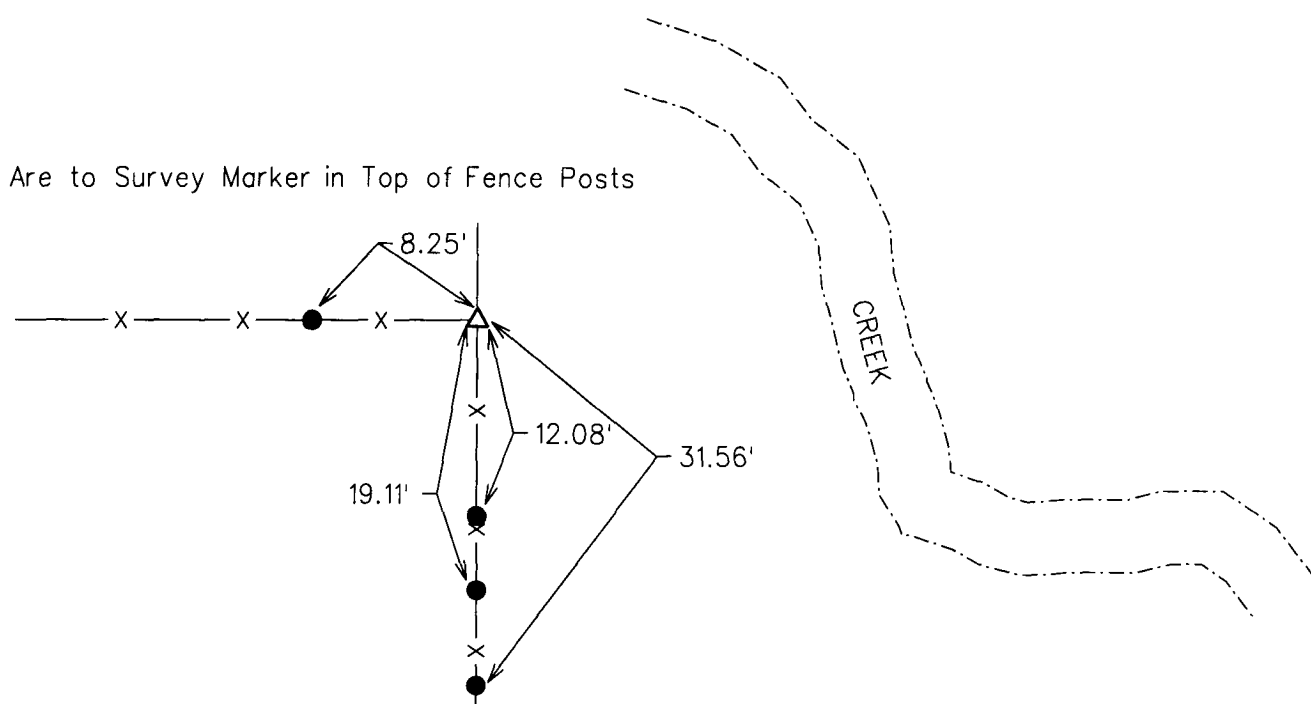
#### Plan-View

(Show a minimum of three reference ties to durable physical objects, relevant monuments and physical conditions that will enable recovery of the corner.)



NORTHWEST CORNER NE1/4 NW1/4  
SET NAIL IN TOP OF CORNER POST  
YELLOW PLASTIC CAP #19710

All Ties Are to Survey Marker in Top of Fence Posts



NOTE: ALL DISTANCES MEASURED HORIZONTAL UNLESS OTHERWISE NOTED.

S&A #C5



I hereby certify that this land surveying document was prepared and the related survey work was performed by me or under my direct personal supervision and that I am a duly licensed Professional Land Surveyor under the laws of the State of Iowa.  
*Erin D. Griffin* 12/22/16  
Erin D. Griffin, PLS Date  
License Number 19710  
My License Renewal Date is December 31, 2017  
Pages or sheets covered by this seal:  
SHEET 1 OF 1

List Corners to be Indexed			
Corners	Section	Twp	Range
NW CORNER NE1/4 NW1/4	10	77	26