



Document 2016 3979

Book 2016 Page 3979 Type 06 043 Pages 1  
Date 12/27/2016 Time 10:34:55AM  
Rec Amt \$7.00

INDX  
ANNO  
SCAN  
CHEK

LISA SMITH, COUNTY RECORDER  
MADISON COUNTY IOWA

PREPARED BY & RETURN TO TERRY COADY, SNYDER & ASSOCIATES, INC. 2727 SW SNYDER ROAD, ANKENY, IOWA 50023 (515) 964-2020

### UNITED STATES PUBLIC LAND SURVEY CORNER CERTIFICATE OF

Land Survey Monuments situated in Section 1, Township 77, Range 26, West of the Fifth Principal Meridian, MADISON County, Iowa. Previously recorded in N/A in County Recorder's Office.  
(book, page, document number, ect.)

(Show reason for preparing this certificate, the evidence and detailed procedures used in establishing the corner positions and monumentation found or placed.)

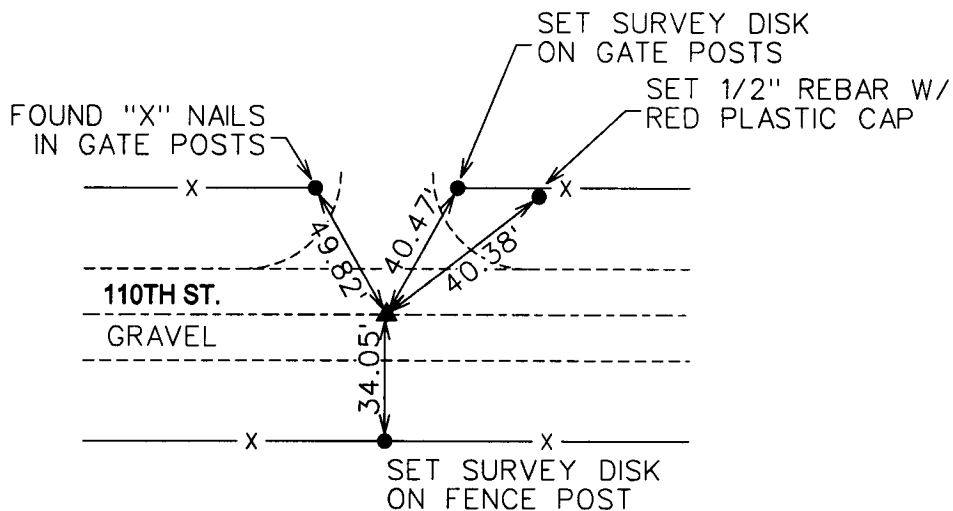
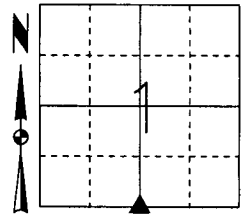
Monument Description and Remarks:

NO RECORDED CORNER CERTIFICATE OR COUNTY ENGINEER TIES WERE FOUND. SURVEY RECORDED BY HENRY S. OAKES PLS #3321 IN BOOK 2, PAGE 380 INDICATES SETTING THE SOUTH 1/4 CORNER OF SECTION 1 WITH A 1/2" IRON PIN CAP #3321. SURVEY RECORDED BY J.M. HOCHSTETLER PLS #6808 IN BOOK 2, PAGE 766 INDICATES FINDING CIR #3321. SEARCH AREA USING EXISTING SURVEYS AND A METAL DETECTOR AND FOUND 1/2" REBAR YELLOW PLASTIC CAP UNREADABLE, 2" DEEP. VERIFIED MONUMENT LOCATION WITH PRIOR SURVEYS AND ACCEPTED FOUND MONUMENT AS THE SECTION CORNER. THIS CERTIFICATE IS BEING PREPARED BECAUSE THERE WAS NO CORNER CERTIFICATE OF RECORD FOR THIS CORNER.

Plan-View

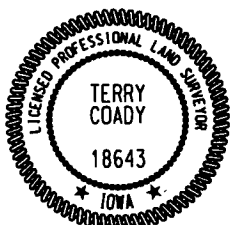
(Show a minimum of three reference ties to durable physical objects, relevant monuments and physical conditions that will enable recovery of the corner.)

S 1/4 CORNER  
FOUND 1/2" REBAR YELLOW PLASTIC CAP #UNREADABLE, 2" DEEP



JDP 12/23/2016  
H:\Survey\Section\_Corners\S&A\_Section\_Certificate\TWP\_RNG\_SEC\_PROJECT\_NUM\77\_26\_01S\_160085.dgn

NOTE: ALL DISTANCES MEASURED HORIZONTAL UNLESS OTHERWISE NOTED.



I hereby certify that this land surveying document was prepared and the related survey work was performed by me or under my direct personal supervision and that I am a duly licensed Professional Land Surveyor under the laws of the State of Iowa.

*Terry Coady* 12-23-2016  
Terry Coady, PLS Date

License Number 18643  
My License Renewal Date is December 31, 2017

Pages or sheets covered by this seal:  
SHEET 1 OF 1

List Corners to be Indexed

Corners	Section	Twp	Range
S 1/4 CORNER	1	77	26
N 1/4 CORNER	12	77	26

TECH: JDP

PN: 1160085

DATE: 12-21-2016