



Document 2016 3934

Book 2016 Page 3934 Type 06 043 Pages 1
Date 12/20/2016 Time 11:59:17AM
Rec Amt \$7.00

INDX
ANNO
SCAN
CHEK

LISA SMITH, COUNTY RECORDER
MADISON COUNTY IOWA

Prepared by: Vincent E. Piagentini, Abaci Consulting Inc, 101 NE Circle Dr, Grimes IA, 50111; (515)986-5048

UNITED STATES PUBLIC LAND SURVEY CORNER CERTIFICATE

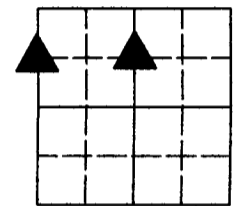
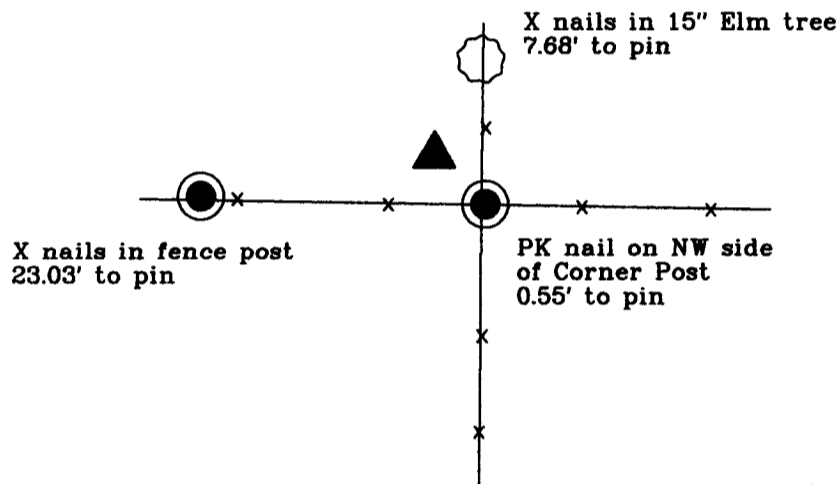
of

LAND SURVEY MONUMENTS SITUATED IN SECTION 14, TOWNSHIP 77 N, RANGE 29 W, of the Fifth Principal Meridian, Madison County, Iowa.

Monument Description & Remarks:

- SE Corner NE1/4 NW1/4 - no monument found, set 1/2" IR YC 15982 - Set at intersection of four way fence.
- SW Corner NW1/4 NW1/4 - no monument found, set 1/2" IR YC 15982 - Set online and at even division of the NW Corner of Section and the West 1/4 Corner of Section.

PLAN VIEW



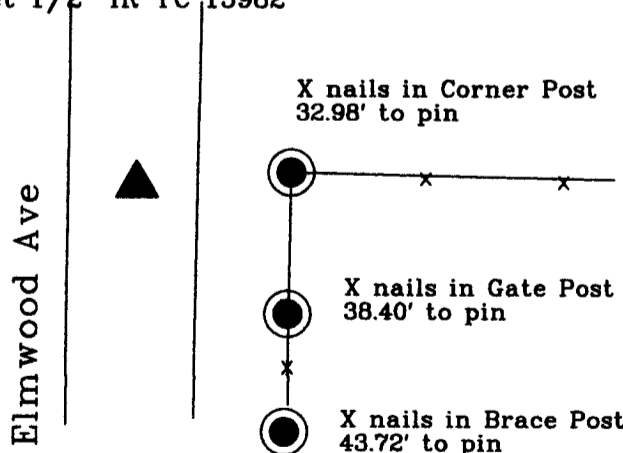
14-77-29

SE Cor NE1/4 NW1/4
Sec 14-77-29

Set 1/2" IR YC 15982

SW Cor NW1/4 NW1/4
Sec 14-77-29

Set 1/2" IR YC 15982



N.T.S.

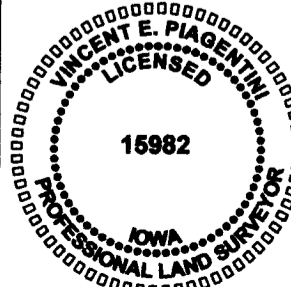
Proj #16881

I HEREBY CERTIFY THAT THIS SURVEYING DOCUMENT WAS PREPARED AND THE RELATED WORK WAS PERFORMED BY ME OR UNDER MY DIRECT PERSONAL SUPERVISION, AND THAT I AM A DULY LICENSED PROFESSIONAL LAND SURVEYOR UNDER THE LAWS OF THE STATE OF IOWA.

Vincent E. Piagentini 12/19/16
VINCENT E. PIAGENTINI, IOWA LIC. NO 15982 DATE

MY LICENSE RENEWAL DATE IS DECEMBER 31, 2016.

ADDITIONAL PAGES CERTIFIED (NONE UNLESS INDICATED HERE) This sheet only.



| Corners to be Indexed: | | | |
|------------------------|---------|------|-------|
| Corner | Section | Twp | Range |
| SE Corner | 14 | T77N | R29W |
| NE1/4 NW1/4 | 14 | T77N | R29W |
| SW Corner | 14 | T77N | R29W |
| NW1/4 NW1/4 | 14 | T77N | R29W |
| SE Corner | 15 | T77N | R29W |
| NE1/4 NE1/4 | 15 | T77N | R29W |