

LISA SMITH, COUNTY RECORDER  
MADISON COUNTY IOWA

CHEK

HACKETT SURVEYING, Prepared By: Michael James Hackett, 712 North 9th Avenue, Winterset, Ia. 50273, Tel. (515) 462-1106

# UNITED STATES PUBLIC LAND SURVEY CORNER CERTIFICATE OF

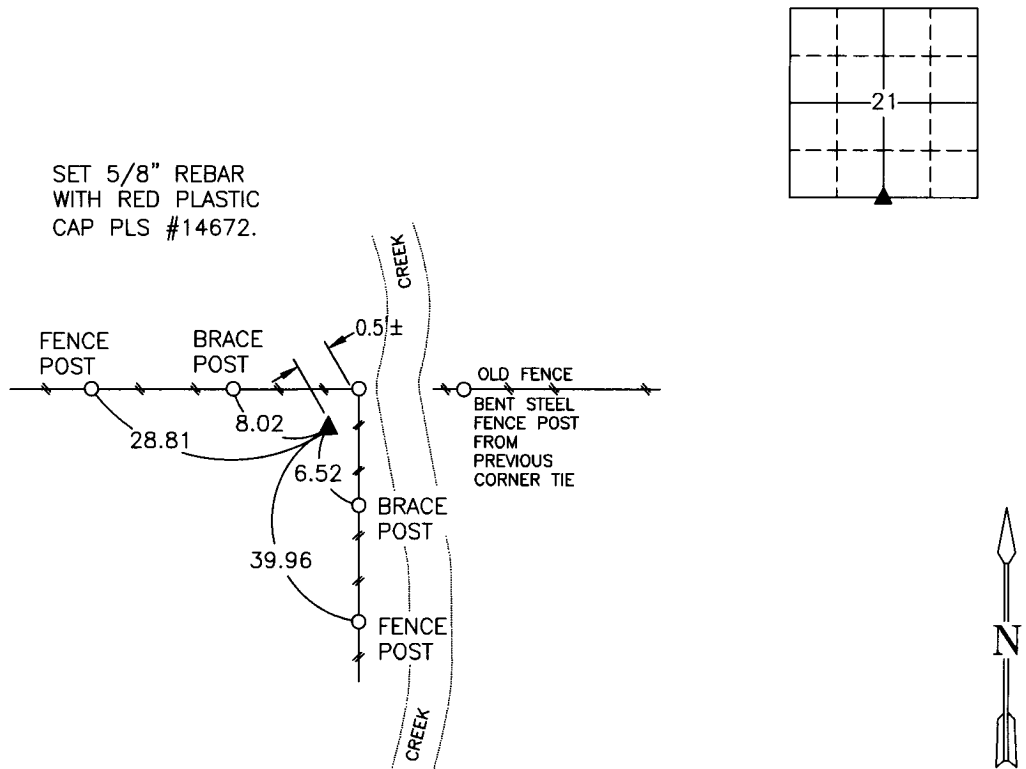
Land Survey Monuments situated in Section 21, Township 76 N, Range 26 W, of the Fifth Principal Meridian, Madison County, Iowa.  
Previously recorded in BOOK 1, PAGE 622 in County Recorder's Office.  
(book, page, document number, etc.)

(Show reason for preparing this certificate, the evidence and detailed procedures used in establishing the corner positions and monumentation found or placed.)

Monument Description and Remarks: Set 5/8" rebar with red plastic cap, PLS #14672. The reason for preparing this certificate is that the pervious monument was not found. The corner position was established from one existing ties and found monuments from survey recorded in Book 3, Page 245. Confrimed the corner location by traversing the South half of Southwest Quarter of Section 21.

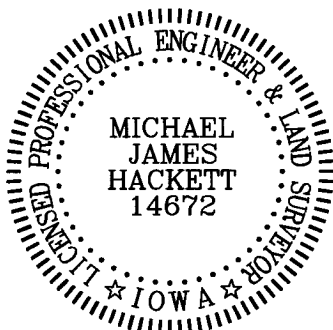
## PLAN VIEW

(Show a minimum of three reference ties to durable physical objects, relevant monuments and physical conditions that will enable recovery of the corner.)



SE. COR., SE. 1/4, SW. 1/4, SEC. 21

NOTE: ALL TIES TO "X" NAILS UNLESS NOTED



I hereby certify that this land surveying document was prepared and the related survey work was performed by me or under my direct personal supervision and that I am a duly Licensed Land Surveyor under the laws of the State of Iowa.

Signed Michael James Hackett Date 12-10-16  
Michael James Hackett

Iowa license number 14672.  
My license renewal date is 12/31/2016.  
Pages covered by this seal: 1.