



Document 2016 3051

Book 2016 Page 3051 Type 06 043 Pages 1  
Date 10/13/2016 Time 11:34:53AM  
Rec Amt \$7.00

LISA SMITH, COUNTY RECORDER  
MADISON COUNTY IOWA

INDX ✓  
ANNO  
SCAN  
CHEK

Prepared by: Mark A. McMurphy, Abaci Consulting Inc, 101 NE Circle Dr, Grimes IA, 50111; (515)986-5048

# UNITED STATES PUBLIC LAND SURVEY CORNER CERTIFICATE

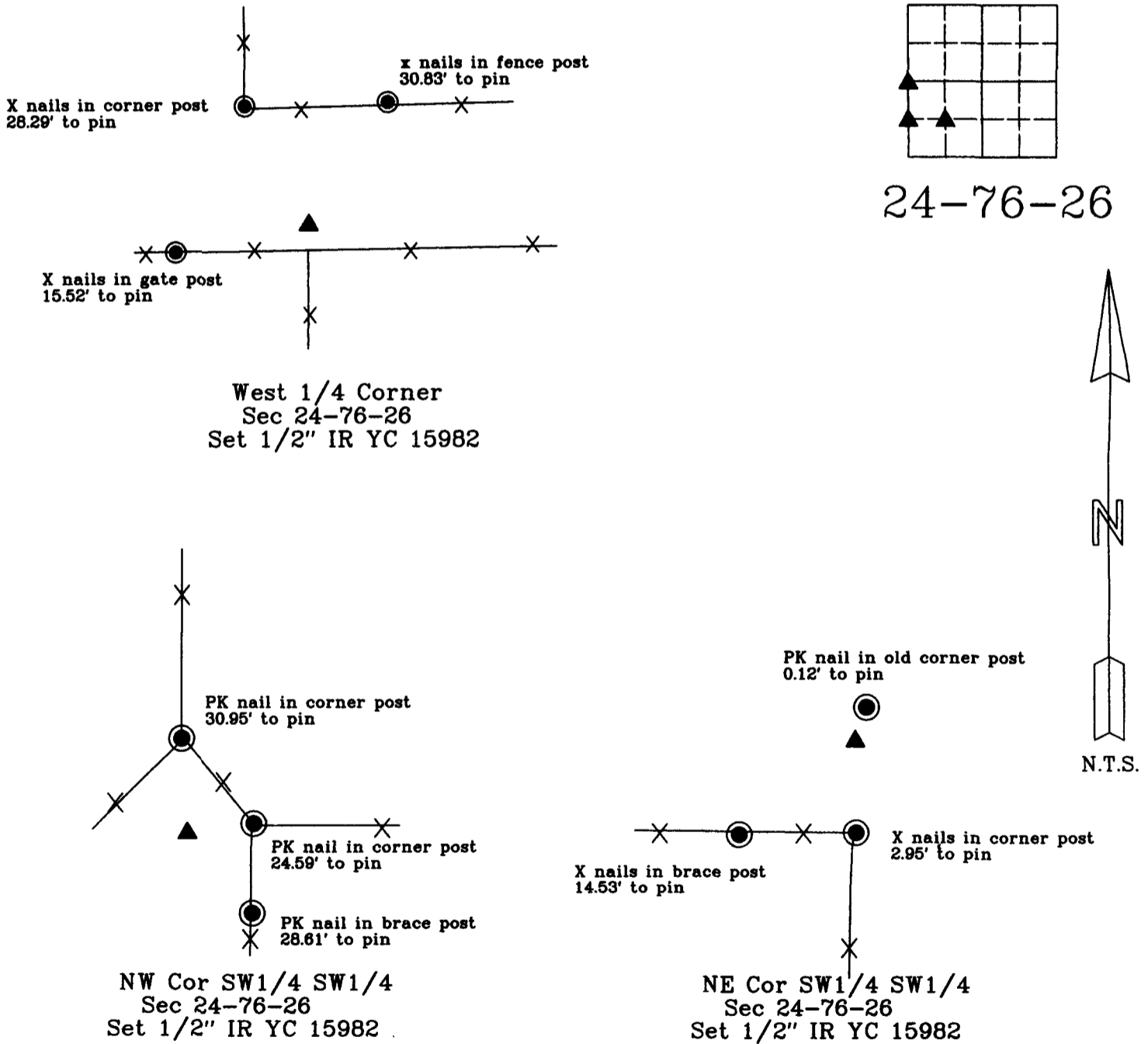
of

LAND SURVEY MONUMENTS SITUATED IN SECTION 24, TOWNSHIP 76 N, RANGE 26 W, of the Fifth Principal Meridian, Madison County, Iowa.

### Monument Description & Remarks:

- W1/4 Corner - Reset per old ties - Used ties to the north as shown on certificate in Book 1 Page 430 to reset corner pin.
- NW Corner of SW1/4 SW1/4 - Set corner pin - Set on even division between w1/4 corner and SW corner of section.
- NE Corner SW1/4 Sw1/4 - Set corner pin - Set on SW corner of old corner post.

## PLAN VIEW

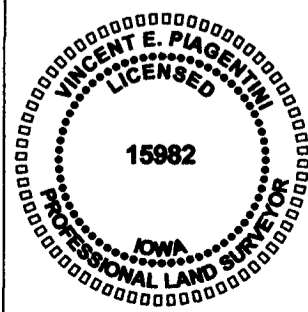


I HEREBY CERTIFY THAT THIS SURVEYING DOCUMENT WAS PREPARED AND THE RELATED WORK WAS PERFORMED BY ME OR UNDER MY DIRECT PERSONAL SUPERVISION, AND THAT I AM A DULY LICENSED PROFESSIONAL LAND SURVEYOR UNDER THE LAWS OF THE STATE OF IOWA.

VINCENT E. PIAGENTINI, IOWA LIC. NO 15982 DATE \_\_\_\_\_

MY LICENSE RENEWAL DATE IS DECEMBER 31, 2016.

ADDITIONAL PAGES CERTIFIED (NONE UNLESS INDICATED HERE) This sheet only.



Corners to be Indexed:			
Corner	Section	Twp	Range
W1/4	24	T76N	R26W
E1/4	23	T76N	R26W
NW COR SW1/4 SW1/4	24	T76N	R26W
NE COR SE1/4 SE1/4	23	T76N	R26W
NE COR SW1/4 SW1/4	24	T76N	R26W