



Document 2016 2821

Book 2016 Page 2821 Type 06 043 Pages 1
Date 9/26/2016 Time 3:59:26PM
Rec Amt \$7.00

INDX ✓
ANNO
SCAN
CHEK

LISA SMITH, COUNTY RECORDER
MADISON COUNTY IOWA

Daniels Land Surveying, 22598 18th Avenue, New Virginia, IA 50210, 515-577-2583

UNITED STATES PUBLIC LAND CORNER CERTIFICATE OF

Land Survey Monuments situated in Section 8, Township 74 N, Range 28 W, of the
5th P.M., Madison County, Iowa. Previously recorded in n.a.
in County Recorders Office. (book, page, document number, etc.)

(Show reason for preparing this certificate, the evidence and detailed procedures used in
establishing the corner positions and monumentation found or placed.)

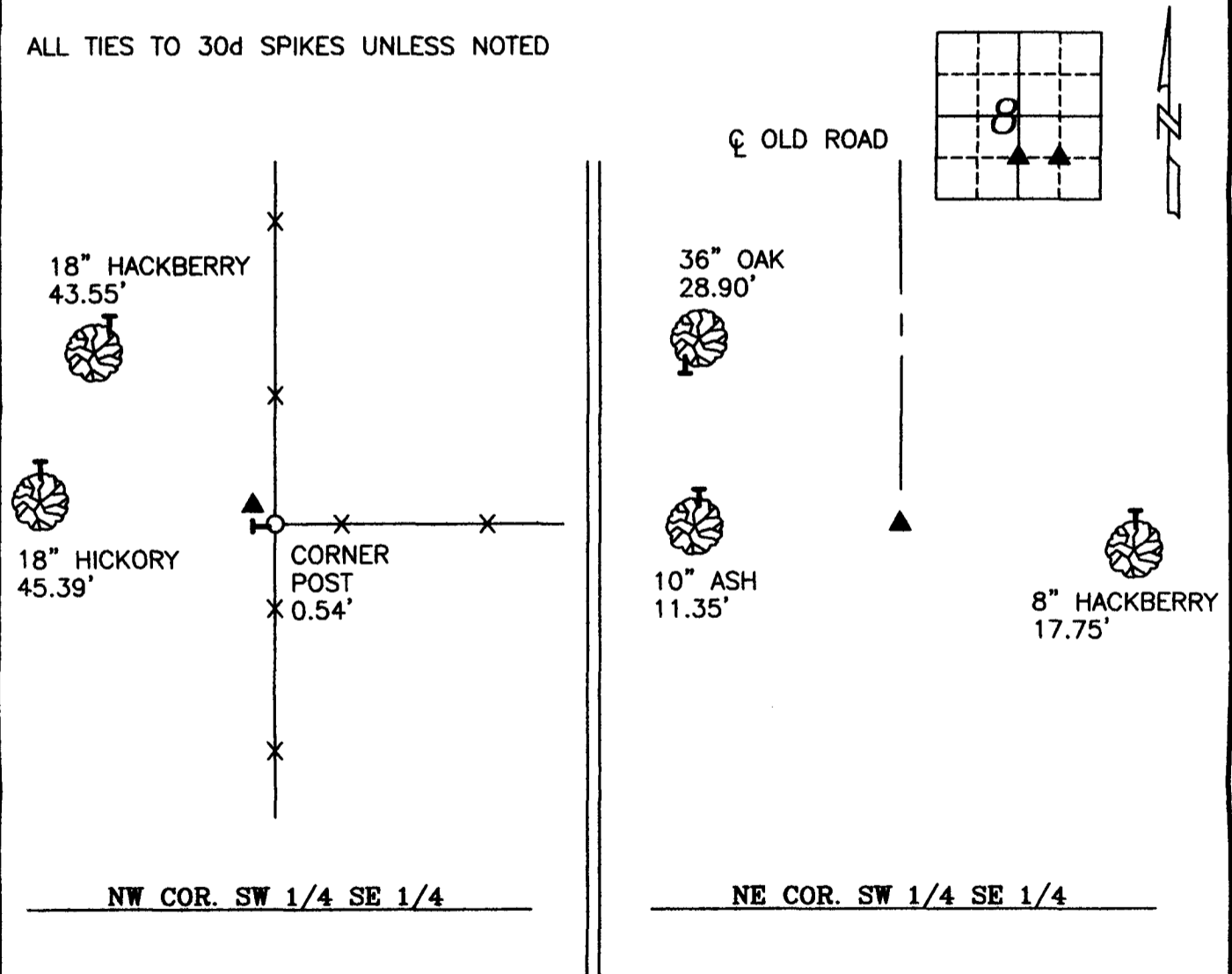
Monument Description and Remarks:

Set 1/2" x 24" red plastic capped rebar, #17532 at mathematical position for
both monuments.

PLAN VIEW

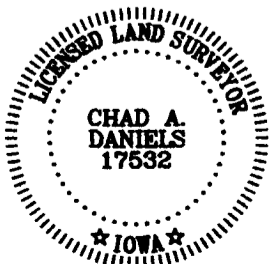
(Show a minimum of three reference ties to durable physical objects, relevant monuments
and physical conditions that will enable recovery of the corner.)

ALL TIES TO 30d SPIKES UNLESS NOTED



NW COR. SW 1/4 SE 1/4

NE COR. SW 1/4 SE 1/4



I hereby certify that this land surveying document was prepared and the
related survey work was performed by me or under my direct personal
supervision and that I am a duly licensed Land Surveyor under the laws
of the State of Iowa.

Signature: Chad A. Daniels Date: 9/22/2016

License number 17532
My license renewal date is December 31, 2016

790-02