



Document 2016 2471

Book 2016 Page 2471 Type 06 043 Pages 1  
Date 8/26/2016 Time 12:36:00PM  
Rec Amt \$.00

INDX ✓  
ANNO ✓  
SCAN

LISA SMITH, COUNTY RECORDER  
MADISON COUNTY IOWA

CHEK

Prepared By: Michael James Hackett, Madison County Engineer's Office, 1105 E. Court Ave., Winterset, Ia. 50273, Tel. (515) 462-1136  
Return To: Michael James Hackett, Madison County Engineer's Office, 1105 E. Court Ave., Winterset, Ia. 50273, Tel. (515) 462-1136

# UNITED STATES PUBLIC LAND SURVEY CORNER CERTIFICATE OF

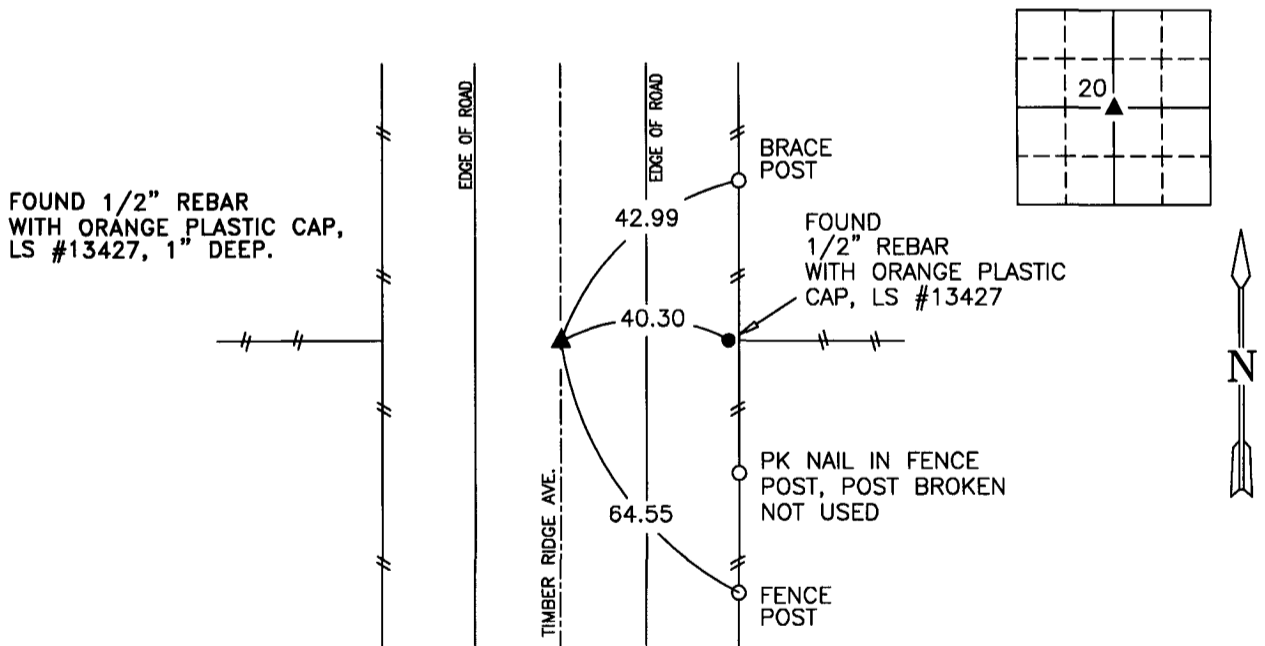
Land Survey Monuments situated in Section 20, Township 77 N, Range 26 W, of the Fifth Principal Meridian, Madison County, Iowa.  
Previously recorded in Book 2013, Page 3886 in County Recorder's Office.  
(book, page, document number, etc.)

(Show reason for preparing this certificate, the evidence and detailed procedures used in establishing the corner positions and monumentation found or placed.)

Monument Description and Remarks: Found 1/2" rebar with orange plastic cap, LS #13427, 1 inches deep in county highway. Confirmed the position of the corner from Madison County bridge replacement project control (BROS-C061(97)--5F-61) and a previously recorded tie. Accepted position. This certificate was prepared because the found tie distances were slightly different than previously recorded and the previously recorded ties were missing and not durable.

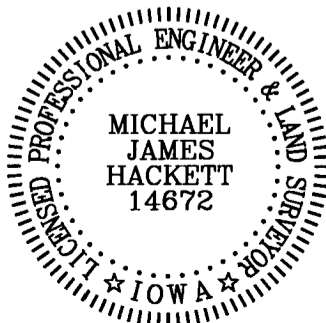
## PLAN VIEW

(Show a minimum of three reference ties to durable physical objects, relevant monuments and physical conditions that will enable recovery of the corner.)



SW. COR., SW. 1/4, NE 1/4 SEC. 20

NOTE: ALL TIES TO "X" NAILS UNLESS NOTED



I hereby certify that this land surveying document was prepared and the related survey work was performed by me or under my direct personal supervision and that I am a duly Licensed Land Surveyor under the laws of the State of Iowa.

Signed Michael James Hackett Date 8-26-2016  
Michael James Hackett

Iowa license number 14672.  
My license renewal date is 12/31/2016.  
Pages covered by this seal: 1.