



Document 2016 2410

Book 2016 Page 2410 Type 06 043 Pages 1
Date 8/22/2016 Time 10:52:11AM
Rec Amt \$7.00

LISA SMITH, COUNTY RECORDER
MADISON COUNTY IOWA

INDEX ✓
ANNO
SCAN
CHECK

Prepared by: Mark A. McMurphy, Abaci Consulting Inc, 101 NE Circle Dr, Grimes IA, 50111; (515)986-5048

UNITED STATES PUBLIC LAND SURVEY CORNER CERTIFICATE

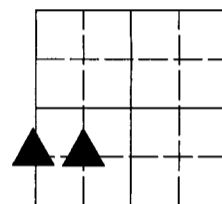
of

LAND SURVEY MONUMENTS SITUATED IN SECTION 14, TOWNSHIP 75 N, RANGE 29 W, of the Fifth Principal Meridian, Madison County, Iowa.

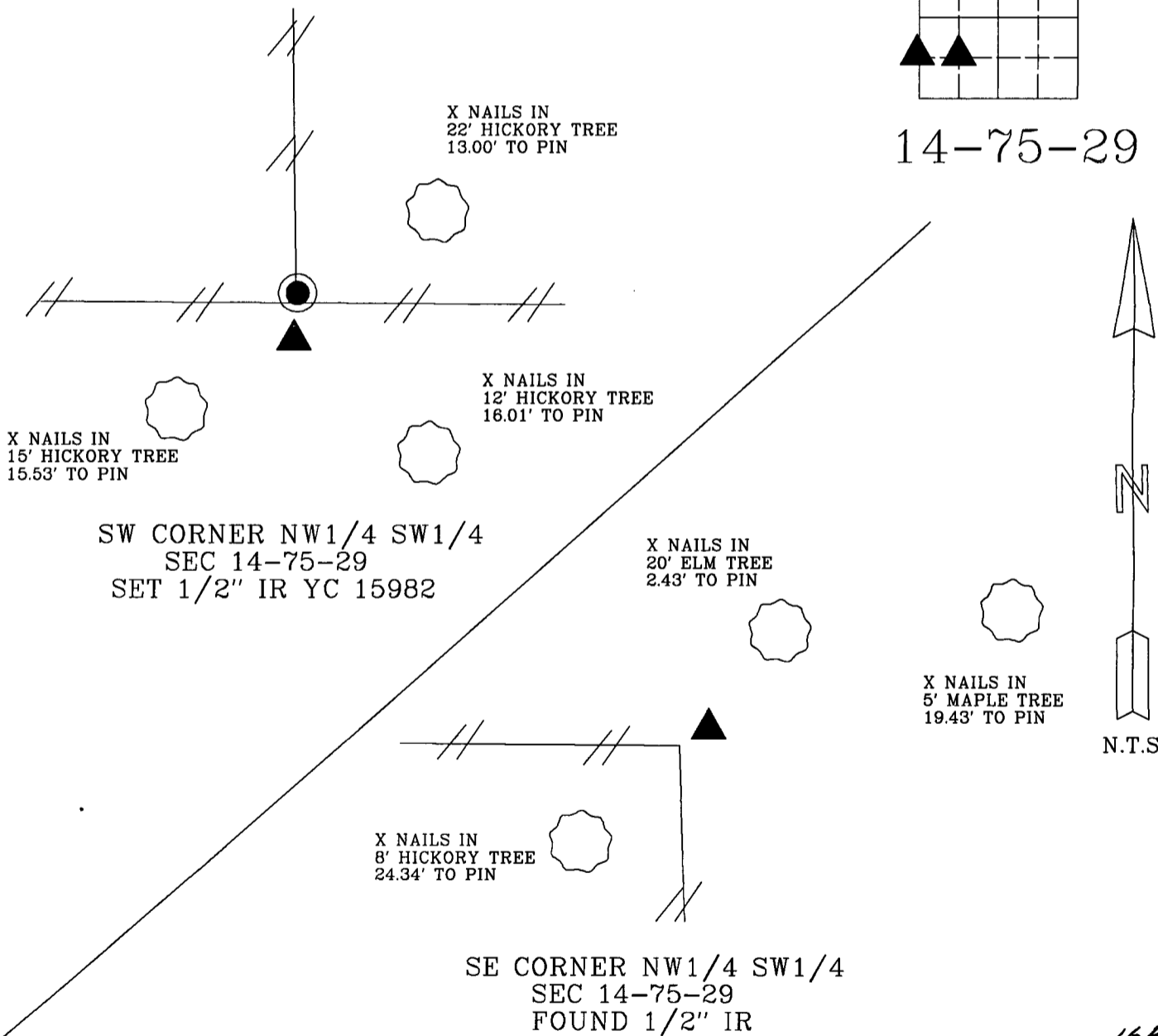
Monument Description & Remarks:

SW corner NW1/4 SW1/4 - searched found nothing, set 1/2" IR YC 15982 - no ties of record.
Set pin due south of bottom of old fence corner lying on the ground. Remnants of old fence running north and west, fence standing to east.
SE corner NW1/4 SW1/4 - found 1/2" IR at NE Corner of old rotten fencepost - no ties of record.
Remnants of fence runs South and West from post.

PLAN VIEW



14-75-29



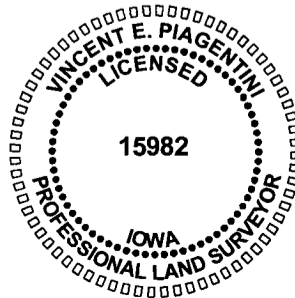
16416

I HEREBY CERTIFY THAT THIS SURVEYING DOCUMENT WAS PREPARED AND THE RELATED WORK WAS PERFORMED BY ME OR UNDER MY DIRECT PERSONAL SUPERVISION, AND THAT I AM A DULY LICENSED PROFESSIONAL LAND SURVEYOR UNDER THE LAWS OF THE STATE OF IOWA.

Vincent E. Piagentini 8/16/16
VINCENT E. PIAGENTINI, IOWA LIC. NO 15982 DATE

MY LICENSE RENEWAL DATE IS DECEMBER 31, 2016.

ADDITIONAL PAGES CERTIFIED (NONE UNLESS INDICATED HERE) This sheet only.



Corners to be Indexed:

Corner	Section	Twp	Range
SW CORNER NW1/4 SW1/4	14	T75N	R29W
SE CORNER NE1/4 SE1/4	15	T75N	R29W
SE CORNER NW1/4 SW1/4	14	T75N	R29W