



Document 2016 2357

Book 2016 Page 2357 Type 06 043 Pages 1
Date 8/15/2016 Time 10:45:57AM
Rec Amt \$7.00

INDEX ✓
ANNO
SCAN
CHEK

LISA SMITH, COUNTY RECORDER
MADISON COUNTY IOWA

Prepared by: Mark A. McMurphy, Abaci Consulting Inc, 101 NE Circle Dr, Grimes IA, 50111; (515)986-5048

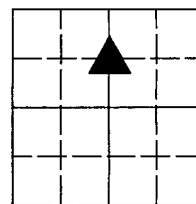
UNITED STATES PUBLIC LAND SURVEY CORNER CERTIFICATE

of
LAND SURVEY MONUMENTS SITUATED IN SECTION 14, TOWNSHIP 75 N, RANGE
28 W, of the Fifth Principal Meridian, Madison County, Iowa.

Monument Description & Remarks:

SE Corner of NE1/4 NW1/4 - Found 1/2" IR YC 6808 - No tie of record

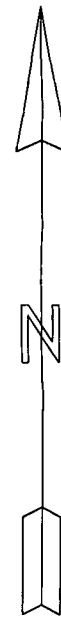
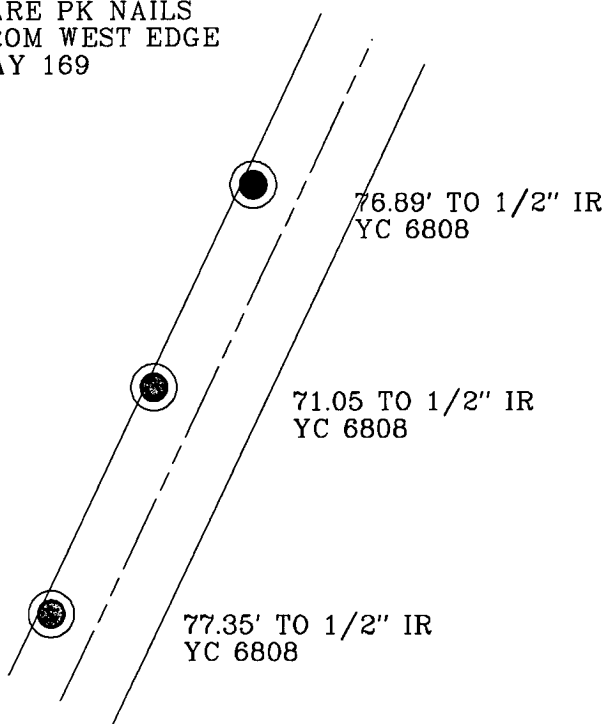
PLAN VIEW



14-75-28

ALL TIES ARE PK NAILS
SET 0.5' FROM WEST EDGE
OF HIGHWAY 169

1/2" IR
YC 6808



N.T.S.

SE Corner NE1/4 NW1/4
Sec 14-75-28
Fnd 1/2" IR YC 6808

Wenck #16446

I HEREBY CERTIFY THAT THIS SURVEYING DOCUMENT WAS PREPARED AND THE RELATED WORK WAS PERFORMED BY ME OR UNDER MY DIRECT PERSONAL SUPERVISION, AND THAT I AM A DULY LICENSED PROFESSIONAL LAND SURVEYOR UNDER THE LAWS OF THE STATE OF IOWA.

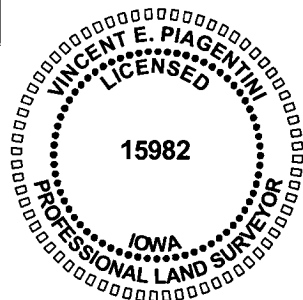
Vincent E. Piagentini

8/15/16

VINCENT E. PIAGENTINI, IOWA LIC. NO 15982 DATE

MY LICENSE RENEWAL DATE IS DECEMBER 31, 2016.

ADDITIONAL PAGES CERTIFIED (NONE UNLESS INDICATED HERE) This sheet only.



Corners to be Indexed:
Corner Section Twp Range
SE Corner 14 T75N R28W
NE1/4 NW1/4