



Document 2016 2211

Book 2016 Page 2211 Type 06 043 Pages 1
Date 8/01/2016 Time 11:05:49AM
Rec Amt \$7.00

LISA SMITH, COUNTY RECORDER
MADISON COUNTY IOWA

INDX
ANNO
SCAN
CHEK

Prepared by: Mark A. McMurphy, Abaci Consulting Inc, 101 NE Circle Dr, Grimes IA, 50111; (515)986-5048

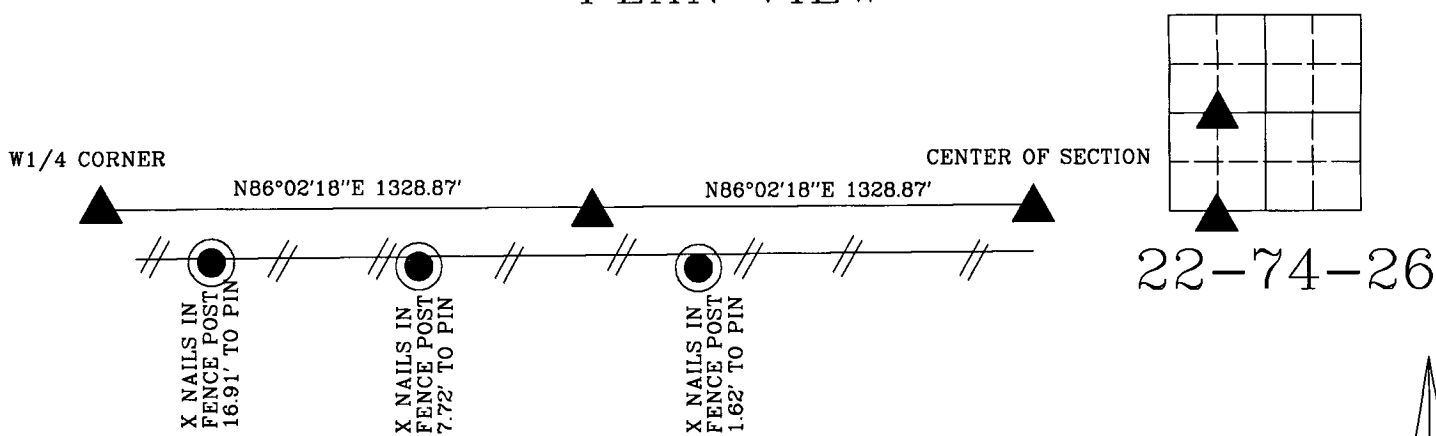
UNITED STATES PUBLIC LAND SURVEY CORNER CERTIFICATE

of
LAND SURVEY MONUMENTS SITUATED IN SECTION 22, TOWNSHIP 74 N, RANGE
26 W, of the Fifth Principal Meridian, Madison County, Iowa.

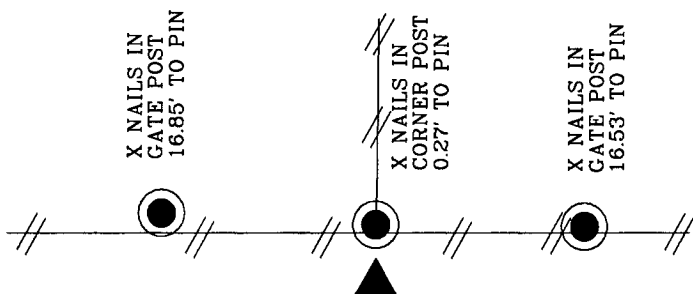
Monument Description & Remarks:

- SE Corner SW1/4 SW1/4 - No ties of record- searched around corner post, found nothing.
Set 1/2" IR YC 15982 on South side of three-way fence.
- NE Corner NW1/4 SW1/4 - No ties of record- searched in computed area, found nothing.
Set 1/2" IR YC 15982 on Line and at even division between Center of Section and West 1/4 Corner.

PLAN VIEW



NE CORNER SW1/4 SW1/4
SEC 22-74-26
SET 1/2" IR YC 15982



SE CORNER SW1/4 SW1/4
SEC 22-74-26
SET 1/2" IR YC 15982

I HEREBY CERTIFY THAT THIS SURVEYING DOCUMENT WAS PREPARED AND THE RELATED WORK WAS PERFORMED BY ME OR UNDER MY DIRECT PERSONAL SUPERVISION, AND THAT I AM A DULY LICENSED PROFESSIONAL LAND SURVEYOR UNDER THE LAWS OF THE STATE OF IOWA.

Vincent E. Piagentini
VINCENT E. PIAGENTINI, IOWA LIC. NO 15982 DATE 7/26/16

MY LICENSE RENEWAL DATE IS DECEMBER 31, 2016.

ADDITIONAL PAGES CERTIFIED (NONE UNLESS INDICATED HERE) This sheet only.



Corners to be Indexed:

Corner	Section	Twp	Range
SE Corner SW1/4 SW1/4	22	T74N	R26W
NE Corner NW1/4 SW1/4	22	T74N	R26W

