



Document 2016 1775

Book 2016 Page 1775 Type 06 043 Pages 1  
Date 6/24/2016 Time 10:55:58AM  
Rec Amt \$7.00

INDX  
ANNO  
SCAN  
CHEK

LISA SMITH, COUNTY RECORDER  
MADISON COUNTY IOWA

Prepared by: Mark A. McMurphy, Abaci Consulting Inc, 101 NE Circle Dr, Grimes IA, 50111; (515)986-5048

# UNITED STATES PUBLIC LAND SURVEY CORNER CERTIFICATE

of

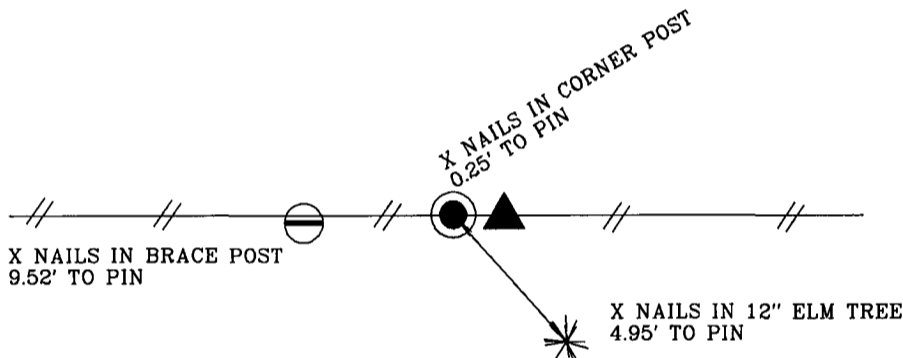
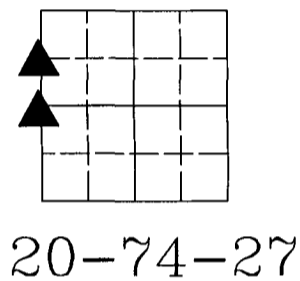
LAND SURVEY MONUMENTS SITUATED IN SECTION 20, TOWNSHIP 74 N, RANGE 27 W, of the Fifth Principal Meridian, Madison County, Iowa.

### Monument Description & Remarks:

NW COR SW1/4 NW1/4 - SET 1/2" IR YC 14674, SET ON EAST SIDE OF CORNER POST IN FENCE.

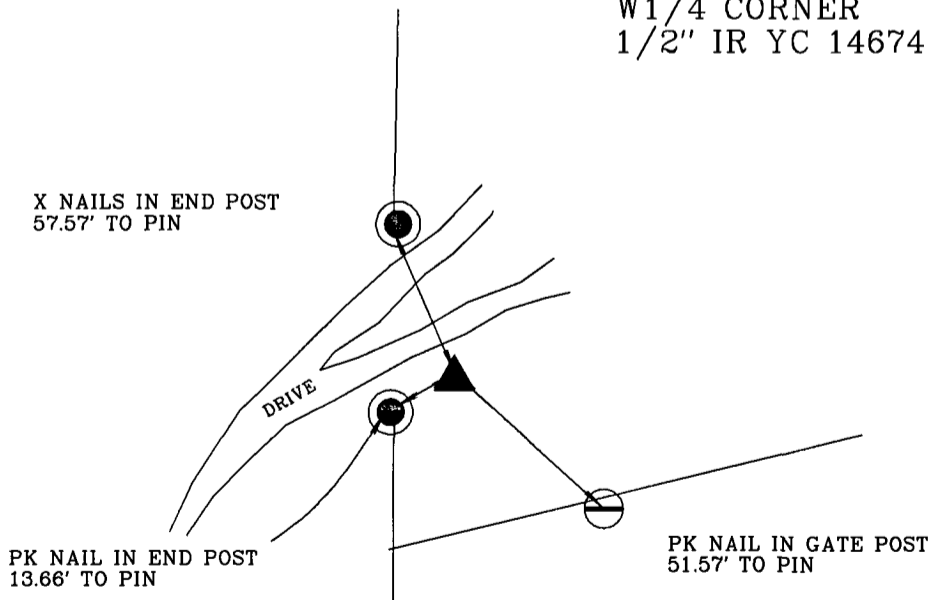
W1/4 CORNER - SET 1/2" IR YC 14674, SET ONLINE, AT EVEN DIVISION BETWEEN NW CORNER OF SW1/4 NW1/4 AND SW CORNER OF NW1/4 SW1/4.

## PLAN VIEW



NW COR SW1/4 NW1/4  
1/2" IR YC 14674

W1/4 CORNER  
1/2" IR YC 14674



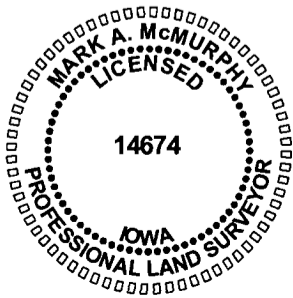
PROJ# 16294

I HEREBY CERTIFY THAT THIS SURVEYING DOCUMENT WAS PREPARED AND THE RELATED WORK WAS PERFORMED BY ME OR UNDER MY DIRECT PERSONAL SUPERVISION, AND THAT I AM A DULY LICENSED PROFESSIONAL LAND SURVEYOR UNDER THE LAWS OF THE STATE OF IOWA.

*Mark A. McMurphy* 6/17/16  
MARK A. MCMURPHY, IOWA LIC. NO. 14674 DATE

MY LICENSE RENEWAL DATE IS DECEMBER 31, 2016.

ADDITIONAL PAGES CERTIFIED (NONE UNLESS INDICATED HERE) This sheet only.



### Corners to be Indexed:

Corner	Section	Twp	Range
W1/4 CORNER	20	T74N	R27W
NW CORNER	20	T74N	R27W
SW1/4 NW1/4			
E1/4 CORNER	19	T74N	R27W
NE CORNER	19	T74N	R27W
SE1/4 NE1/4			