



Document 2016 1624

Book 2016 Page 1624 Type 06 043 Pages 1
Date 6/10/2016 Time 10:23:11AM
Rec Amt \$7.00

INDX ✓
ANNO
SCAN
CHEK

LISA SMITH, COUNTY RECORDER
MADISON COUNTY IOWA

PREPARED BY: CRAIG S. BOLDMAN 521 WEST GREEN STREET, WINTERSET, IA 50273 PHONE (515)462-9242

UNITED STATES PUBLIC LAND SURVEY CORNER CERTIFICATE

Land Survey Monuments situated in Section 31, Township 76, Range 29, the Fifth Principal Meridian, Madison County, Iowa.
Previously recorded in None found in County Recorder's Office

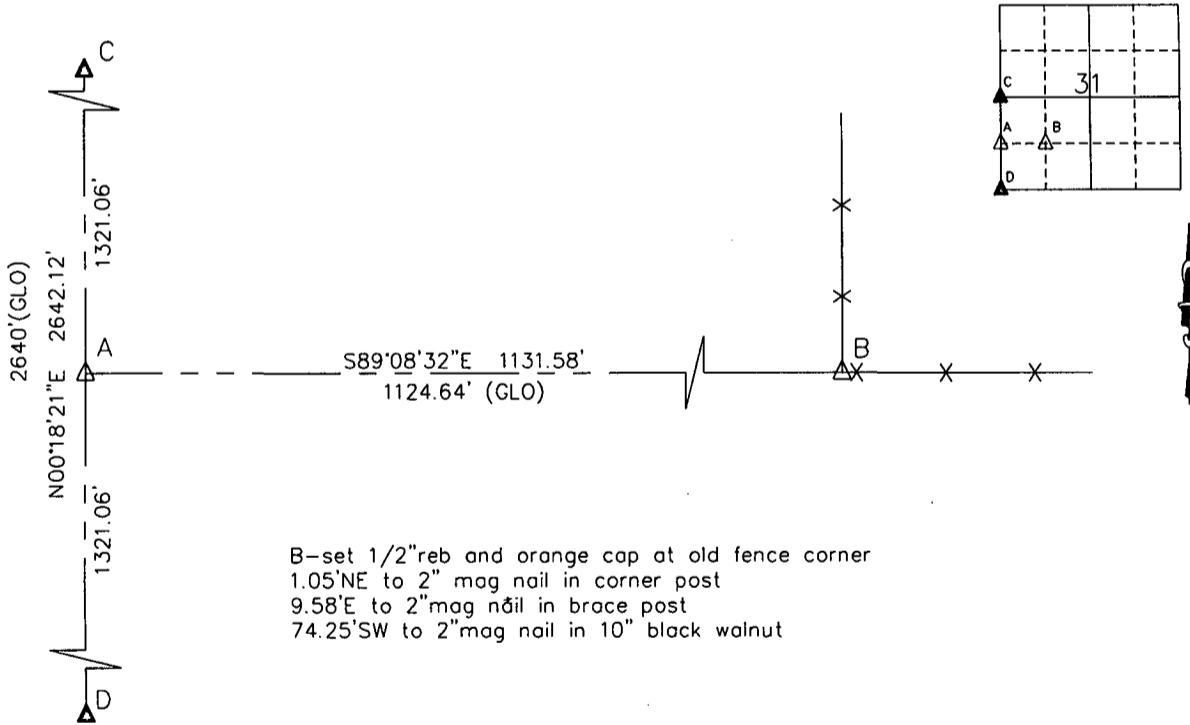
(Show reason for preparing this certificate, the evidence and detailed procedures used in establishing the corner positions & monumentation found or placed)

Monument Description and Remarks:

SW corner N 1/2 Fr W 1/2 SW 1/4- Nothing found at corner A. Placed 1/2" rebar with orange plastic cap on line at midpoint between found corners C and D

SE corner N 1/2 Fr W 1/2 SW 1/4- Dug, probed and listened. Nothing found. Placed 1/2" rebar with orange plastic cap at fence corner B. Distance to A is within reason of the GLO plat

PLAN-VIEW



B-set 1/2" reb and orange cap at old fence corner
1.05' NE to 2" mag nail in corner post
9.58' E to 2" mag nail in brace post
74.25' SW to 2" mag nail in 10" black walnut

NOTE: ALL TIES TO ORANGE PLASTIC SURVEY MARKES UNLESS NOTED

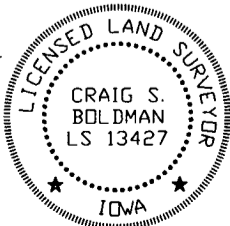
I HEREBY CERTIFY THAT THIS LAND SURVEYING DOCUMENT WAS PREPARED AND THE RELATED SURVEY WORK WAS PERFORMED BY ME OR UNDER MY DIRECT PERSONAL SUPERVISION AND THAT I AM A DULY LICENSED LAND SURVEYOR UNDER THE LAWS OF THE STATE OF IOWA

SIGNATURE Craig S. Boldman
CRAIG S. BOLDMAN

DATE: 6/9/16 LICENSE NO 13427

MY RENEWAL DATE IS DECEMBER 31, 2016

COVERS SHEETS 1



CORNERS TO BE INDEXED

Corners	Section	Township	Range
SW cor N1/2 Fr W1/2		31-76-29	
SE cor N1/2 Fr W1/2		31-76-29	

Project No. 16027