

FILED NO 1039

BOOK 3 PAGE 127

97 SEP 10 PH 3-02

MICHELLE UTILL  
RECORDER  
MADISON COUNTY IOWA

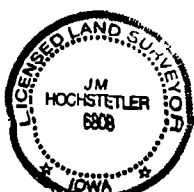
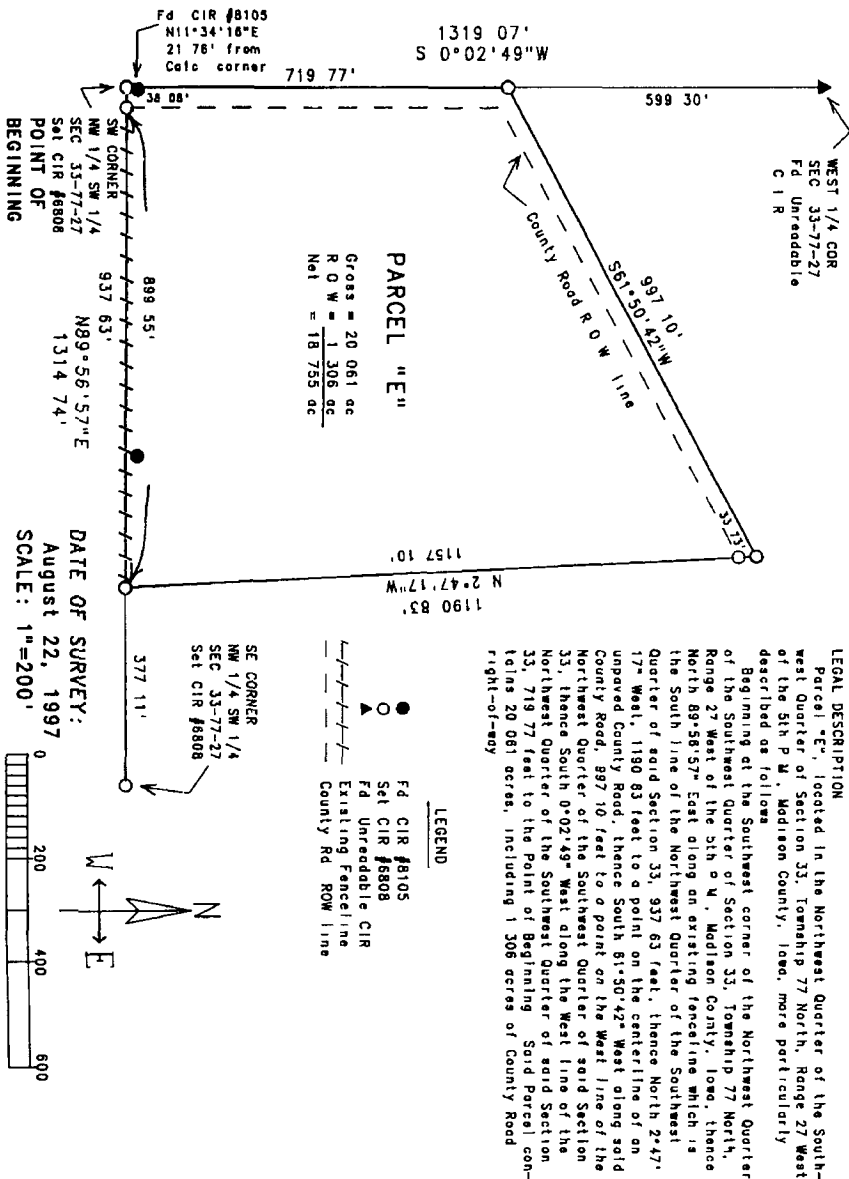
REC & AUD & R.M.F. &

VANCE & HOCHSTETLER, P.C. CONSULTING ENGINEERS, WINTERSSET, IOWA (515)462-3995

CHARLES T. VANCE, 110 WEST GREEN ST., WINTERSSET, IOWA 50273

JAMES M. HOCHSTETLER, 110 WEST GREEN ST., WINTERSSET, IOWA 50273

A PLAT OF SURVEY FOR HARVEY FLORER LOCATED IN THE NORTH-  
WEST QUARTER OF THE SOUTHWEST QUARTER OF SECTION 33, TOWN-  
SHIP 77 NORTH, RANGE 27 WEST OF THE 5TH P. M., MADISON COUNTY  
IOWA.



I hereby certify that this land surveying document was prepared and the related survey work was performed by me or under my direct personal supervision and that I am a duly licensed Land Surveyor under the laws of the State of Iowa.  
*J. M. Hochstetler*  
J. M. HOCHSTETLER  
License number 6808 Date 8/22/97  
My license renewal date is December 31, 1997  
Pages or sheets covered by this plat: 1