

FILED NO. **1033**

BOOK **3** PAGE **121**

97 SEP 10 PM 2:55

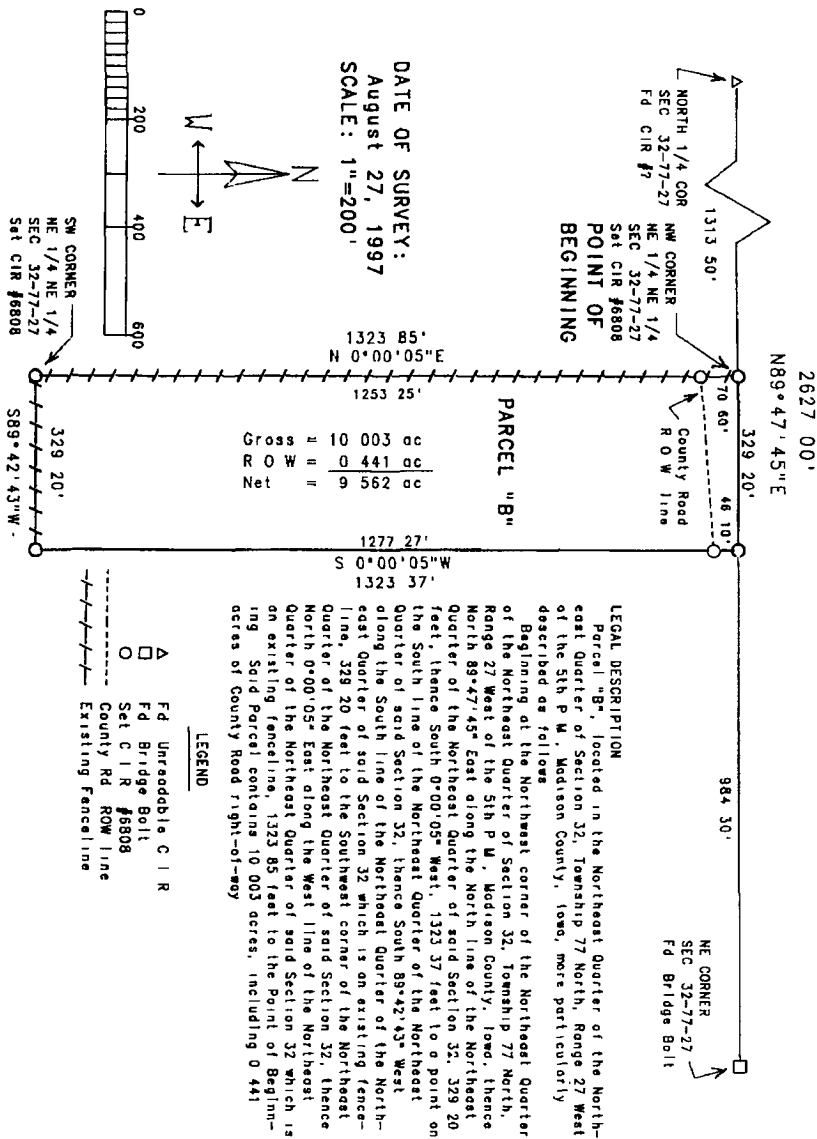
L. BELLE GILL
RECORDER
MADISON COUNTY, IOWA

REC **500**
AUD
R.M.F. **100**

VANCE & HOCHSTETLER, P.C. CONSULTING ENGINEERS, WINTERSSET, IOWA (515)462-3995

CHARLES T. VANCE, 110 WEST GREEN ST., WINTERSSET, IOWA 50273
JAMES M. HOCHSTETLER, 110 WEST GREEN ST., WINTERSSET, IOWA 50273

A PLAT OF SURVEY FOR HARVEY FLORER LOCATED IN THE NORTH-EAST QUARTER OF THE NORTHEAST QUARTER OF SECTION 32, TOWNSHIP 77 NORTH, RANGE 27 WEST OF THE 5th P.M., MADISON COUNTY IOWA.



I hereby certify that this land surveying document was prepared and the related survey work was performed by me or under my direct personal supervision and that I am a duly licensed Land Surveyor under the laws of the State of Iowa.

J.M. Hochstetler
J.M. HOCHSTETLER
 License number 6808 Date 8/29/97
 My license renewal date is December 31, 1997
 Pages or sheets covered by this seal: 1

