

FILED NO. **1020**

BOOK 3 PAGE 106

97 SEP 10 PM 2: 28

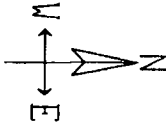
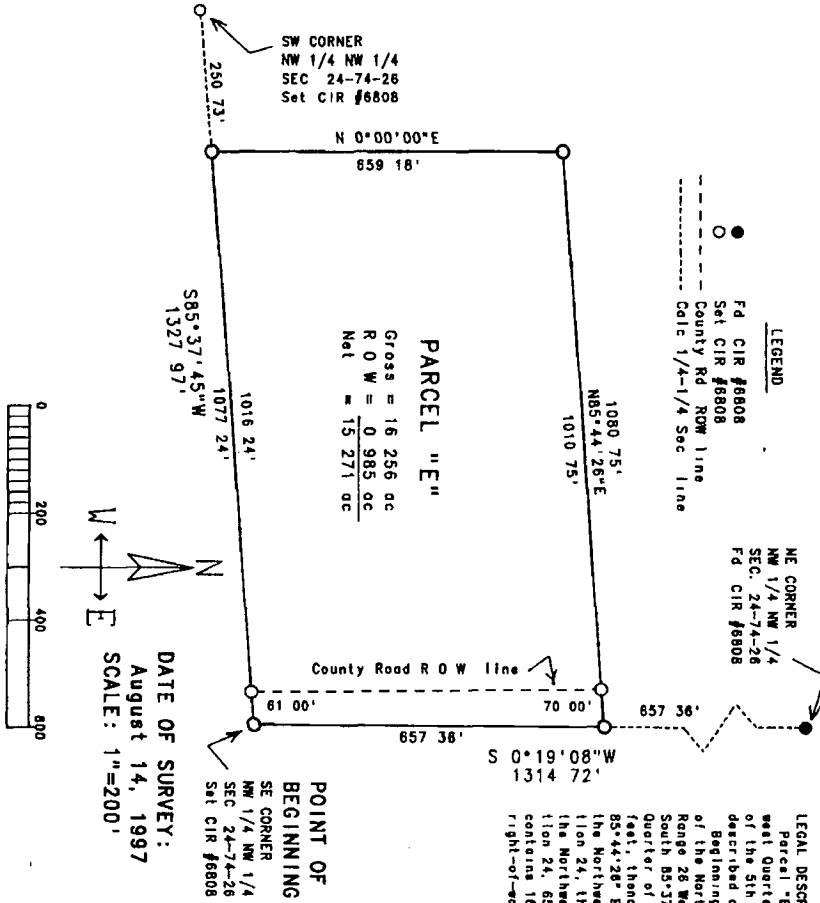
SCHELLE (I.I.)  
RECORDER  
MADISON COUNTY IOWA

REC'D JM  
AUD'D  
R.M.F. JM

**VANCE & HOCHSTETLER, P.C. CONSULTING ENGINEERS, WINTERSSET, IOWA (515)462-3985**

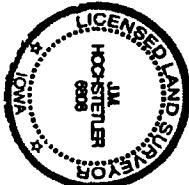
**CHARLES T. VANCE, 110 WEST GREEN ST., WINTERSSET, IOWA 50273**  
**JAMES M. HOCHSTETLER, 110 WEST GREEN ST., WINTERSSET, IOWA 50273**

A PLAT OF SURVEY FOR MARK GROSSMAN LOCATED IN THE NORTHWEST QUARTER OF THE NORTHWEST QUARTER OF SECTION 24, TOWNSHIP 74 NORTH, RANGE 26 WEST OF THE 5TH P.M., MADISON COUNTY IOWA.



DATE OF SURVEY:  
August 14, 1997  
SCALE: 1"=200'

POINT OF BEGINNING  
NW 1/4 NW 1/4  
SEC 24-74-26  
Sat CIR #6808



I hereby certify that this land surveying document was prepared and the related survey work was performed by me or under my direct personal supervision and that I am a duly Licensed Land Surveyor under the laws of the State of Iowa.

*JM Hochstetler*  
JAMES M. HOCHSTETLER  
License number 6828  
My license renewal date is December 31, 1997  
Pages or sheets covered by this seal: 1