

FILED NO. **1032**

BOOK 3 PAGE 120

97 SEP 10 PM 2:53

CONNELLE UIC.
RECORDS
MADISON COUNTY, IOWA

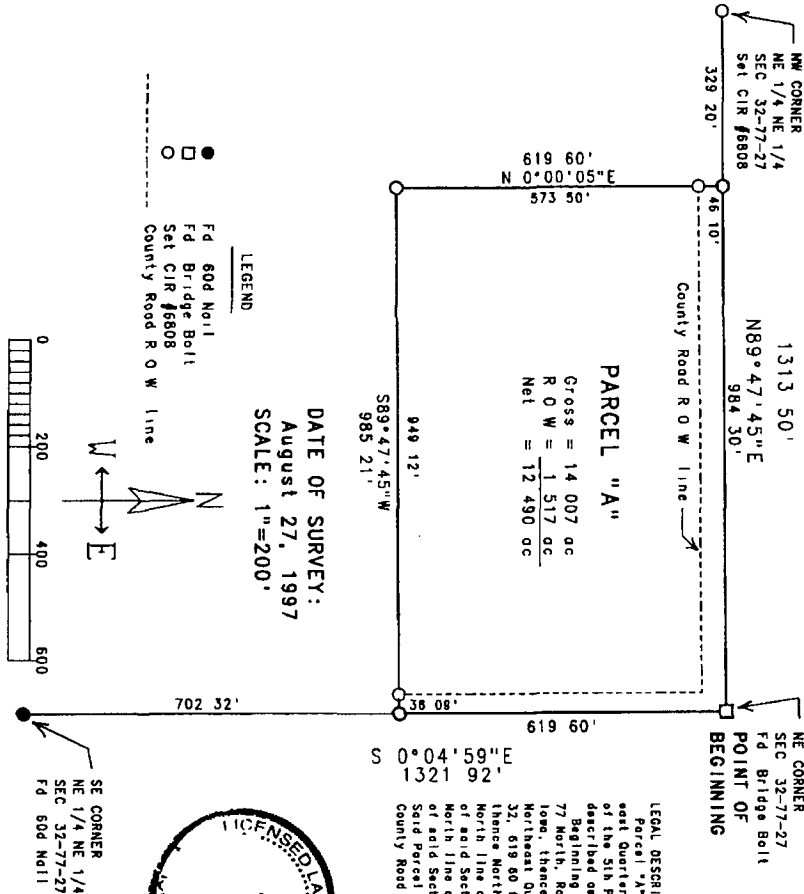
REC. \$ 15.00

AUD. \$
R.M.F. \$ 1.00

VANCE & HOCHSTETLER, P.C. CONSULTING ENGINEERS, WINTERSSET, IOWA (515)462-3995

CHARLES T. VANCE, 110 WEST GREEN ST., WINTERSSET, IOWA 50273
JAMES M. HOCHSTETLER, 110 WEST GREEN ST., WINTERSSET, IOWA 50273

A PLAT OF SURVEY FOR HARVEY FLORES LOCATED IN THE NORTH-EAST QUARTER OF THE NORTHEAST QUARTER OF SECTION 32, TOWNSHIP 77 NORTH, RANGE 27 WEST OF THE 5th P.M., MADISON COUNTY IOWA.

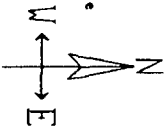


PARCEL "A"
Gross = 14 007 ac
R O W = 1 517 ac
Net = 12 490 ac

DATE OF SURVEY:
August 27, 1997
SCALE: 1"=200'

LEGEND

● Fd 80d Nail
□ Fd Bridge Bolt
○ Set CIR #6808
County Road R O W line



NE CORNER
SEC 32-7-27
Fd Bridge Bolt
POINT OF BEGINNING

S 0°04'59"E
1321 92'

SE CORNER
NE 1/4 NE 1/4
SEC 32-7-27
Fd 80d Nail

LEGAL DESCRIPTION

Parcel "A", located in the Northeast Quarter of the North-east Quarter of Section 32, Township 77 North, Range 27 West of the 5th P.M., Madison County, Iowa, more particularly described as follows:
Beginning at the Northeast corner of Section 32, Township 77 North, Range 27 West of the 5th P.M., Madison County, Iowa, thence South 0°04'59" East along the East line of the Northeast Quarter of the Northeast Quarter of said Section 32, 619 60 feet, thence South 88°47'45" East, 985 21 feet, thence North 0°00'05" East, 619 60 feet to a point on the North line of the Northeast Quarter of the Northeast Quarter of said Section 32, thence North 89°47'45" East along the North line of the Northeast Quarter of the Northeast Quarter of said Section 32, 984 30 feet to the Point of Beginning. Said Parcel contains 14 007 acres, including 1 517 acres of County Road right-of-way.



I hereby certify that this plat, containing the foregoing description and the contained survey, was prepared by me or under my direct personal supervision and that I am a duly Licensed Land Surveyor under the laws of the State of Iowa.

J. M. HOCHSTETLER
James M. HOCHSTETLER
Survey number 6288
Date: 8/27/97
2"=100' (revised date is December 31, 1997)
Pages or sheets covered by this plat: 1