

FILED NO. **638**

BOOK 3 PAGE 85

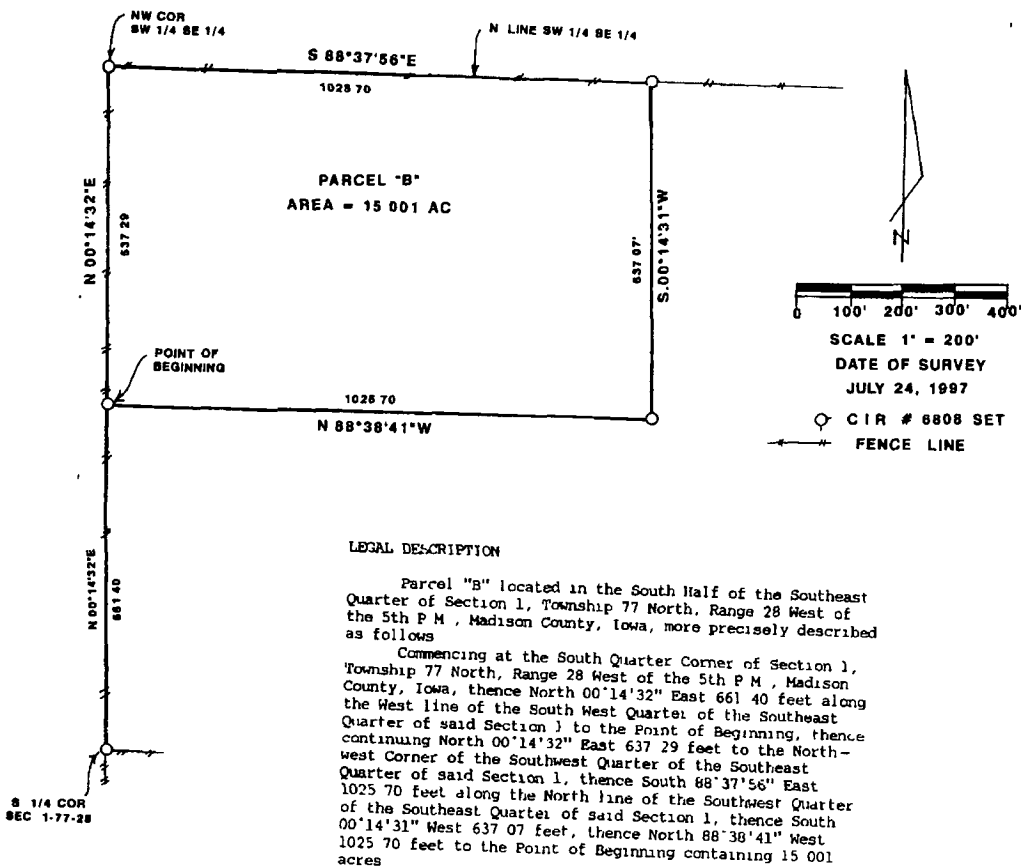
97 AUG 12 PH 3: 08

MICHELLE UTSLER
RECORDER
MADISON COUNTY, IOWA

VANCE & HOCHSTETLER, P.C. CONSULTING ENGINEERS, WINTERSET, IOWA (515)462-3995

CHARLES T. VANCE, 110 WEST GREEN ST., WINTERSET, IOWA 50273
JAMES M. HOCHSTETLER, 110 WEST GREEN ST., WINTERSET, IOWA 50273

PLAT OF SURVEY FOR DALE HARTSOOK IN THE SOUTH HALF OF THE
SOUTHEAST QUARTER OF SECTION 1, TOWNSHIP 77 NORTH, RANGE 28
WEST OF THE 5TH P.M., MADISON COUNTY, IOWA



I hereby certify that this land surveying document was prepared and the related survey work was performed by me or under my direct personal supervision and that I am a duly Licensed Land Surveyor under the laws of the State of Iowa.

J.M. Hochstetler
J.M. HOCHSTETLER
License number 6808 Date 7/29/97
My renewal date is December 31, 1997
Pages or sheets covered by this seal 1