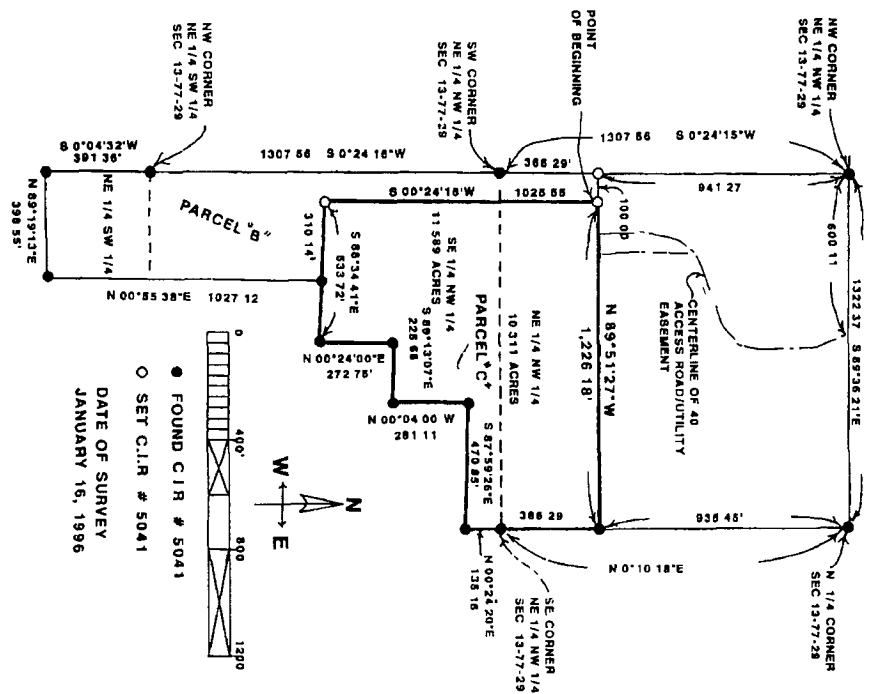


REC'D 500 FILED NO. 1405  
 AUDS \_\_\_\_\_ BOOK 3 PAGE 329  
 TIME 1:00 98 SEP 29 Ph 3:15  
 COMPUTER   
 RECORDED  MICHELLE UTSLER  
 COMPARED \_\_\_\_\_ RECORDER  
 MADISON COUNTY, IOWA

VANCE & HOCHSTETLER, P.C. CONSULTING ENGINEERS, WINTERSSET, IOWA (515)462-3995  
 CHARLES T VANCE, 71 JEFFERSON ST, WINTERSSET, IOWA 50273  
 JAMES M. HOCHSTETLER, 71 JEFFERSON ST, WINTERSSET, IOWA 50273

A PLAT OF SURVEY FOR MIKE MORRISON IN THE E 1/2 OF THE NW 1/4 OF SECTION 13,  
 TOWNSHIP 77 NORTH, RANGE 29 WEST OF THE 5TH P.M., MADISON COUNTY, IOWA



DATE OF SURVEY  
 JANUARY 16, 1996



I HEREBY CERTIFY THAT THIS PLAT, SPECIFICALLY THE PART OF THE SURVEY OF THE NW 1/4 OF SECTION 13, T77N, R29W OF THE 5TH P.M., MADISON COUNTY, IOWA, WAS PREPARED BY ME OR UNDER MY CLOSE PERSONAL SUPERVISION AND THAT I AM A LICENSED PROFESSIONAL ENGINEER IN THE STATE OF IOWA.  
 Charles T. Vance, P.E.  
 January 16, 1996  
 My Commission Expires December 31, 1997

DESCRIPTION  
 Parcel "C" in the East Half of the Northwest Quarter, and being a part of Parcel "B" all in Section 13, Township 77 North, Range 29 West of the 5th Principal Meridian, Madison County, Iowa, more particularly described as follows:  
 Commencing at the Northwest Corner of the NE 1/4 of the NW 1/4 of Section 13, T77N, R29W of the 5th P.M., Madison County, Iowa, thence, along the West line of said NE 1/4 of the NW 1/4 South 00°24'15" West, 94.27 feet; thence South 89°51'27" East, 100.00 feet to the Point of Beginning; thence South 00°24'15" West, 1,025.35 feet; thence South 88°34'41" East, 533.72 feet; thence North 00°24'00" East, 272.75 feet; thence South 89°13'07" East, 225.68 feet; thence North 00°04'00" West, 281.11 feet; thence South 87°59'26" East, 470.85 feet; thence North 00°24'20" East, 351.6 feet to the Southeast Corner of the NE 1/4 of the NW 1/4 of said Section 13, thence, along the East line of said NE 1/4 of the NW 1/4, North 00°10'18" East, 366.29 feet; thence North 89°51'27" West, 1,226.18 feet to the point of beginning. Said Parcel "C" contains 21.900 Acres