

REC \$ **5.00**

AUD \$

RMF \$ **1.00**

COMPUTER

RECORDED

COMPARED

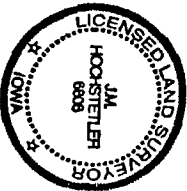
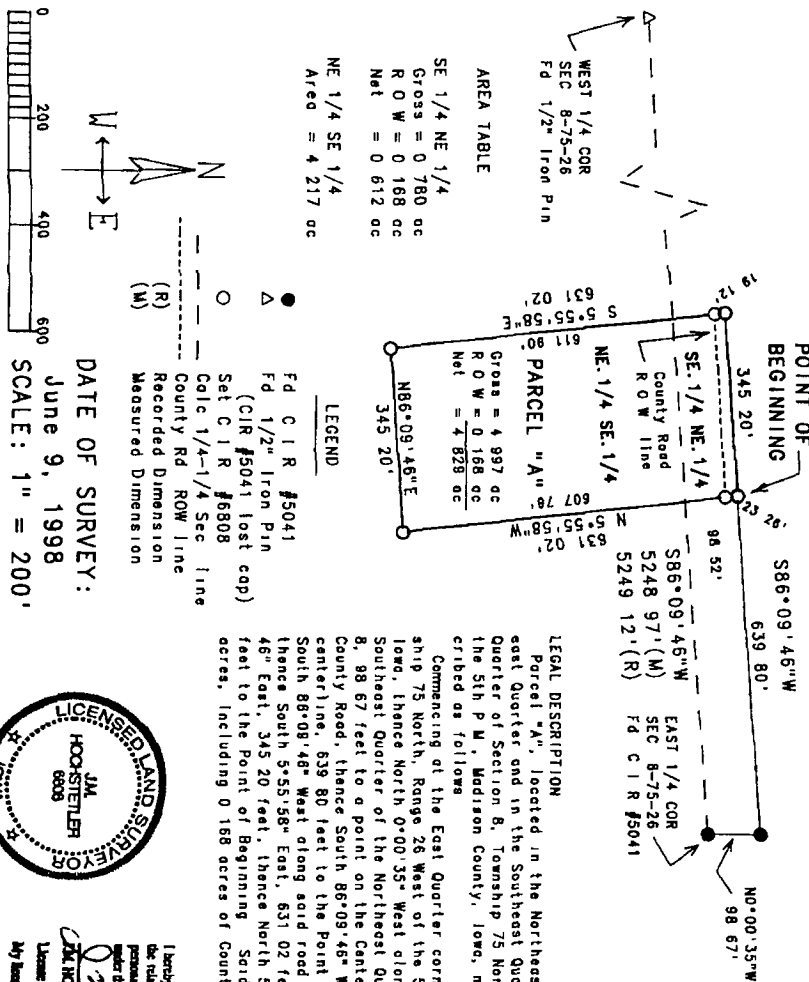
BOOK **13** PAGE **276**

98 JUN 16 PM 3:28

MICHELLE UTSLI,  
RECORDER  
MADISON COUNTY, IOWA

VANCE & HOCHSTETLER, P.C. CONSULTING ENGINEERS, WINTERSET, IOWA (515)462-3995  
 CHARLES T. VANCE 110 WEST GREEN ST., WINTERSET, IOWA 50273  
 JAMES M. HOCHSTETLER, 110 WEST GREEN ST., WINTERSET, IOWA 50273

A PLAT OF SURVEY FOR PAT & PEGGY SULLIVAN LOCATED IN THE  
 NORTHEAST QUARTER OF THE SOUTHEAST QUARTER AND IN THE SOUTH-  
 EAST QUARTER OF THE NORTHEAST QUARTER OF SECTION 8, TOWNSHIP  
 75 NORTH, RANGE 26 WEST OF THE 5th P.M., MADISON COUNTY,  
 IOWA.



I hereby certify this plat and accompanying documents were prepared and the related survey work was performed by me or under my direct personal supervision and that I am a duly Licensed Land Surveyor under the laws of the State of Iowa.

*J.M. Hochstetler*  
 J.M. HOCHSTETLER  
 License number 6808  
 My license renewed date is December 31, 1997.  
 Printed or otherwise prepared by the state: 1