

INDX ✓
ANNO ✓
SCAN ✓
CHK

LISA SMITH, COUNTY RECORDER
MADISON COUNTY IOWA

Prepared by: Mark A. McMurphy, Abaci Consulting Inc, 101 NE Circle Dr, Grimes IA, 50111; (515)986-5048

UNITED STATES PUBLIC LAND SURVEY CORNER CERTIFICATE

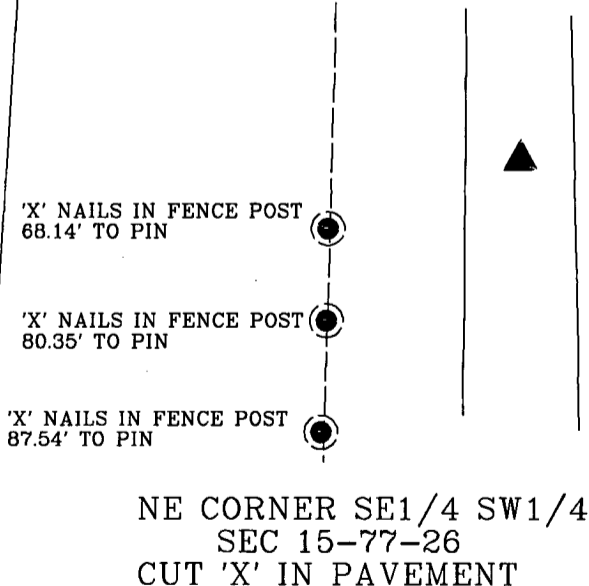
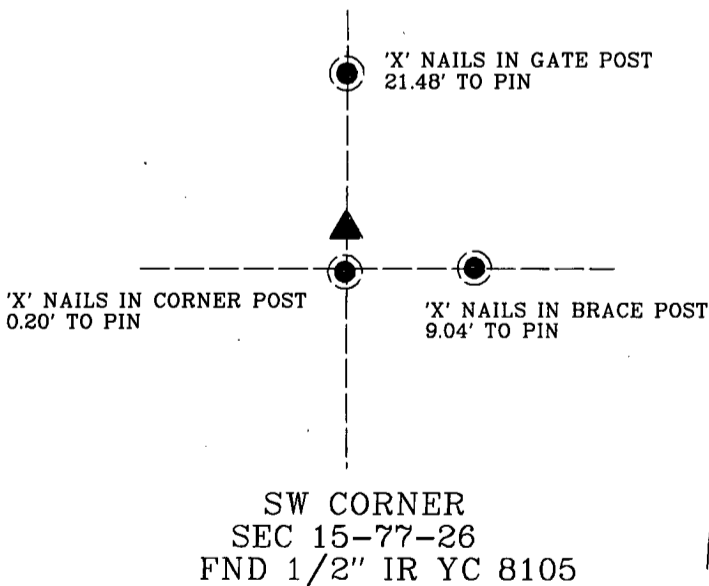
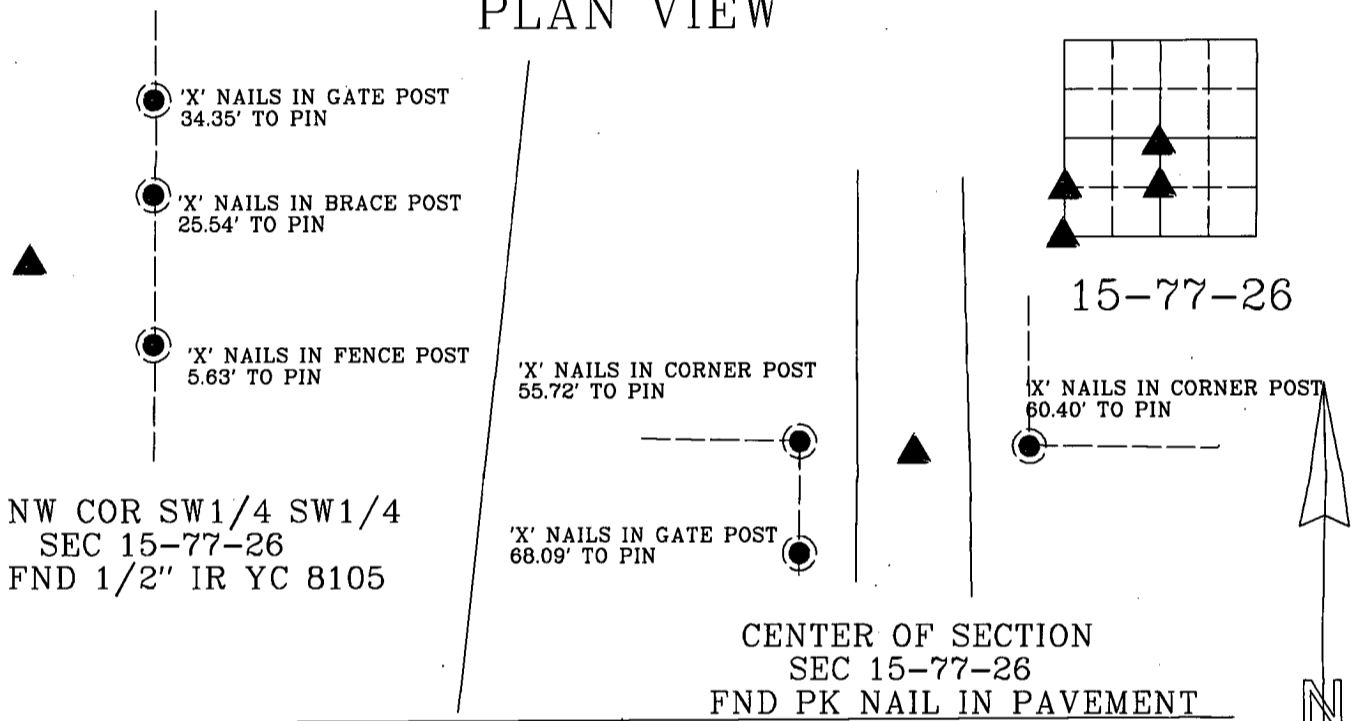
of

LAND SURVEY MONUMENTS SITUATED IN SECTION 15, TOWNSHIP 77 N, RANGE 26 W, of the Fifth Principal Meridian, Madison County, Iowa.

Monument Description & Remarks:

- SW Corner, Found 1/2" ir yc 8105, No ties of record
- NW corner of SW1/4 SW1/4, Found 1/2" IR yc 8105, No ties of record
- NE corner of SE1/4 SW1/4, Set Cut 'X' in pavement on line between center and S1/4 corner on even division, No ties of record
- Center of Section, Found pk nail in center of road, No ties of record

PLAN VIEW



I HEREBY CERTIFY THAT THIS SURVEYING DOCUMENT WAS PREPARED AND THE RELATED WORK WAS PERFORMED BY ME OR UNDER MY DIRECT PERSONAL SUPERVISION, AND THAT I AM A DULY LICENSED PROFESSIONAL LAND SURVEYOR UNDER THE LAWS OF THE STATE OF IOWA.

VINCENT E. PIAGENTINI, IOWA LIC. NO 15982 DATE

MY LICENSE RENEWAL DATE IS DECEMBER 31, 2016.

ADDITIONAL PAGES CERTIFIED (NONE UNLESS INDICATED HERE) This sheet only.



Corners to be Indexed:

Corner	Section	Twp	Range
CENTER	15	T77N	R26W
SW cor	15	T77N	R26W
NW cor	15	T77N	R26W
SW1/4 SW1/4			
NE cor	15	T77N	R26W
SE1/4 SW1/4			