



Document 2016 874

Book 2016 Page 874 Type 06 043 Pages 1

Date 4/11/2016 Time 11:17:50AM

Rec Amt \$7.00

INDEX
ANNO
SCAN

LISA SMITH, COUNTY RECORDER
MADISON COUNTY IOWA

CHEK

Prepared by: Mark A. McMurphy, Abaci Consulting Inc, 101 NE Circle Dr, Grimes IA, 50111; (515)986-5048

UNITED STATES PUBLIC LAND SURVEY CORNER CERTIFICATE

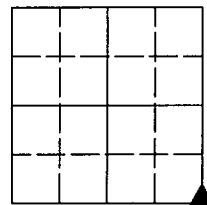
of

LAND SURVEY MONUMENTS SITUATED IN SECTION 2, TOWNSHIP 77 N, RANGE 28 W, of the Fifth Principal Meridian, Madison County, Iowa.

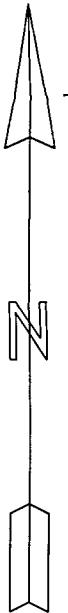
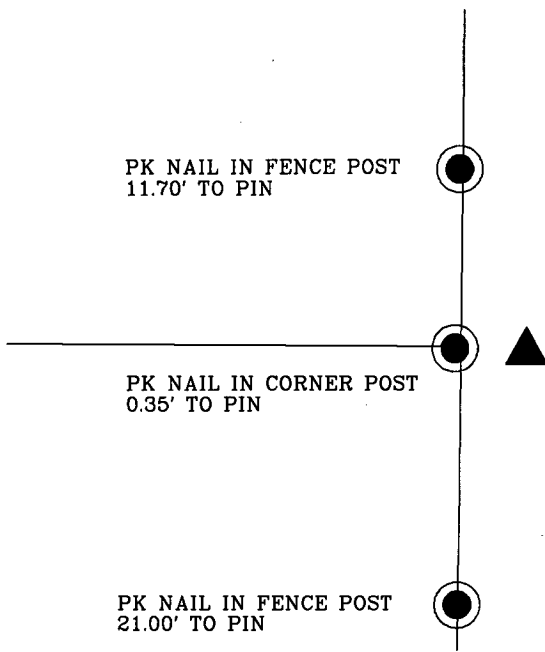
Monument Description & Remarks:

No ties of record, searched and found nothing.
Set 1/2" IR at intersetcion of a three-way fence line, running north/south and west.

PLAN VIEW



02-77-28



N.T.S.

SE CORNER
SEC 02-77-28
SET 1/2" IR
YC 15982

MORTON: 16072

I HEREBY CERTIFY THAT THIS SURVEYING DOCUMENT WAS PREPARED AND THE RELATED WORK WAS PERFORMED BY ME OR UNDER MY DIRECT PERSONAL SUPERVISION, AND THAT I AM A DULY LICENSED PROFESSIONAL LAND SURVEYOR UNDER THE LAWS OF THE STATE OF IOWA.

Vincent E. Piagentini 4/11/16

VINCENT E. PIAGENTINI, IOWA LIC. NO 15982 DATE

MY LICENSE RENEWAL DATE IS DECEMBER 31, 2016.

ADDITIONAL PAGES CERTIFIED (NONE UNLESS INDICATED HERE) This sheet only.



Corners to be Indexed:

Corner	Section	Twp	Range
SE Corner	02	T77N	R28W
SW Corner	01	T77N	R28W
NW Corner	12	T77N	R28W
NE Corner	11	T77N	R28W