



Document 2016 560

Book 2016 Page 560 Type 06 043 Pages 1

Date 3/07/2016 Time 10:03:00AM

Rec Amt \$7.00

LISA SMITH, COUNTY RECORDER  
MADISON COUNTY IOWA

✓ INDX  
✓ ANNO  
SCAN  
CHECK

Prepared by: Mark A. McMurphy, Abaci Consulting Inc, 101 NE Circle Dr, Grimes IA, 50111; (515)986-5048

# UNITED STATES PUBLIC LAND SURVEY CORNER CERTIFICATE

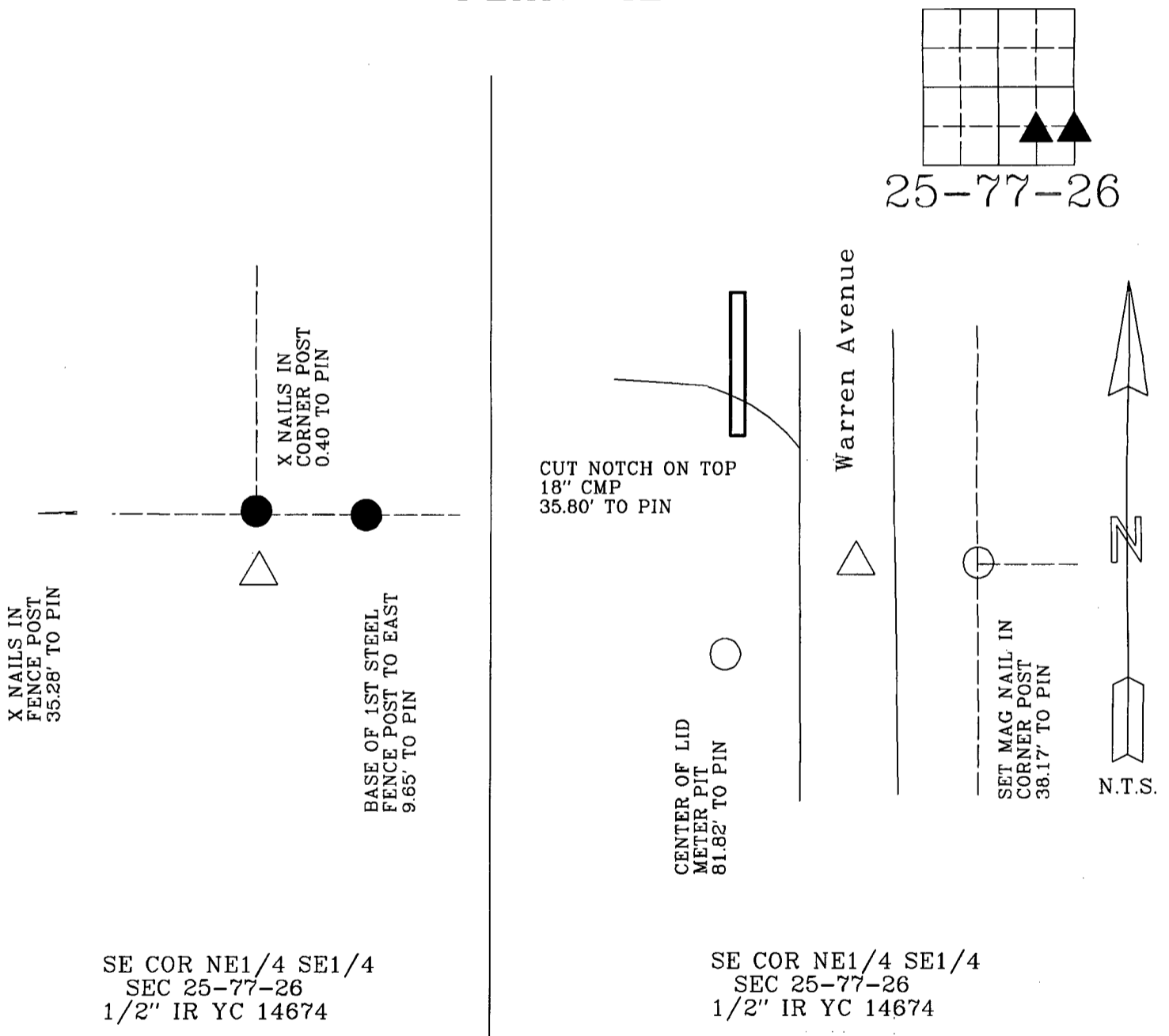
of

LAND SURVEY MONUMENTS SITUATED IN SECTION 25, TOWNSHIP 77 N, RANGE 26 W, of the Fifth Principal Meridian, Madison County, Iowa.

### Monument Description & Remarks:

SE COR NE1/4 SE1/4 - Set 1/2" IR YC 14674 at even split between SE Corner of Section and E1/4 Corner of Section  
SW COR NE1/4 SE1/4 - Set 1/2" IR YC 14674 due south of fence intersection of fence running East / West and North

## PLAN VIEW

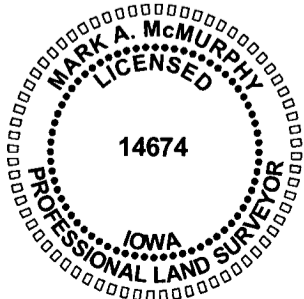


I HEREBY CERTIFY THAT THIS SURVEYING DOCUMENT WAS PREPARED AND THE RELATED WORK WAS PERFORMED BY ME OR UNDER MY DIRECT PERSONAL SUPERVISION, AND THAT I AM A DULY LICENSED PROFESSIONAL LAND SURVEYOR UNDER THE LAWS OF THE STATE OF IOWA.

*Mark A. McMurphy* 3/3/16  
MARK A. MCMURPHY, IOWA LIC. NO 14674 DATE

MY LICENSE RENEWAL DATE IS DECEMBER 31, 2016.

ADDITIONAL PAGES CERTIFIED (NONE UNLESS INDICATED HERE)                      This sheet only.



Corners to be Indexed:

Corner	Section	Twp	Range
SE NE1/4	SE1/4	25	T77N R26W
SW NE1/4	SE1/4	25	T77N R26W

15494