



Document 2016 232

Book 2016 Page 232 Type 06 043 Pages 1
Date 1/27/2016 Time 11:26:20AM
Rec Amt \$7.00

INDX ✓
ANNO ✓
SCAN
CHEK

LISA SMITH, COUNTY RECORDER
MADISON COUNTY IOWA

Daniels Land Surveying, 22598 18th Avenue, New Virginia, IA 50210, 515-577-2583

UNITED STATES PUBLIC LAND CORNER CERTIFICATE OF

Land Survey Monuments situated in Section 6, Township 74 N, Range 26 W, of the 5th P.M., Madison County, Iowa. Previously recorded in NE Cor - Bk 1 Pg 112 in County Recorders Office. (book, page, document number, etc.)

(Show reason for preparing this certificate, the evidence and detailed procedures used in establishing the corner positions and monumentation found or placed.)

Monument Description and Remarks:

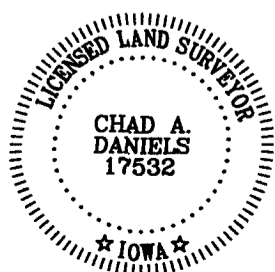
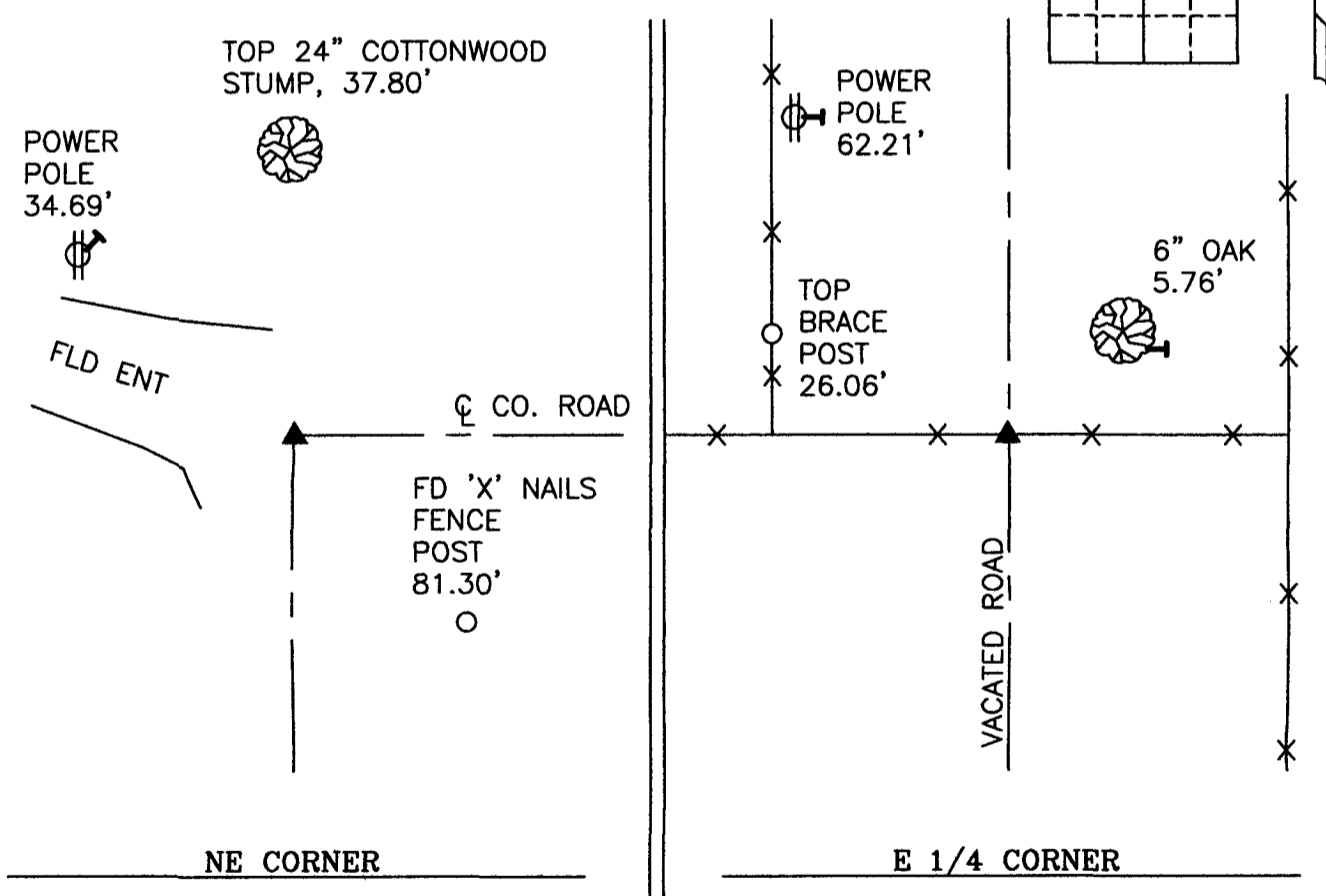
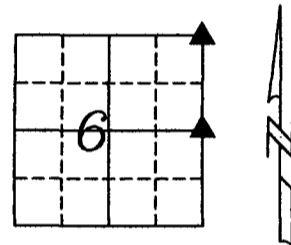
NE CORNER: Monument shown in Book 1 Page 112 has been destroyed. I reset 1/2" x 24" red plastic capped rebar, #17532 using one remaining tie and existing monuments in the area.

E 1/4 CORNER: Set 1/2" x 24" red plastic capped rebar, #17532 at intersection of centerline of road and boundary fence East/West,

PLAN VIEW

(Show a minimum of three reference ties to durable physical objects, relevant monuments and physical conditions that will enable recovery of the corner.)

ALL TIES TO 30d SPIKES UNLESS NOTED



I hereby certify that this land surveying document was prepared and the related survey work was performed by me or under my direct personal supervision and that I am a duly licensed Land Surveyor under the laws of the State of Iowa.

Signature: Chad A. Daniels Date: 1/24/2016

License number 17532
My license renewal date is December 31, 2016