



Document 2016 26

Book 2016 Page 26 Type 06 026 Pages 1

Date 1/05/2016 Time 12:21:38PM

Rec Amt \$7.00

INDX ✓

ANNO

SCAN

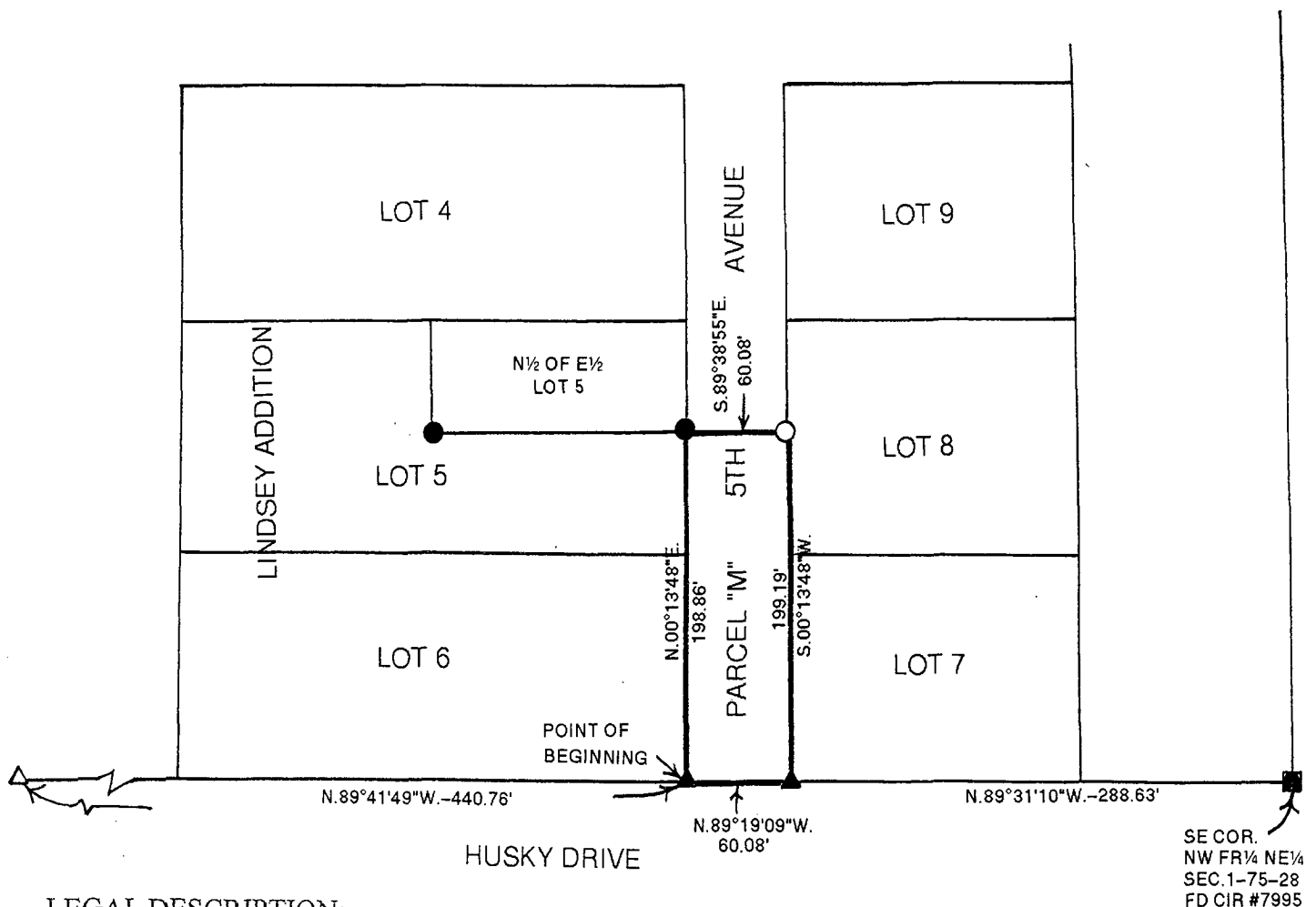
CHEK

LISA SMITH, COUNTY RECORDER
MADISON COUNTY IOWA

✓ VANCE & HOCHSTETLER, P.C. • CONSULTING ENGINEERS • WINTERSET, IOWA 50273

CHARLES T. VANCE • 110 WEST GREEN ST., WINTERSET, IOWA • (515) 462-3995
JAMES M. HOCHSTETLER • 110 WEST GREEN ST., WINTERSET, IOWA • FAX: (515) 462-9845

PLAT OF SURVEY OF A PART OF 5TH AVENUE IN LINDSEY ADDITION
TO THE CITY OF WINTERSET, MADISON COUNTY, IOWA
OWNED BY CITY OF WINTERSET, IOWA.



LEGAL DESCRIPTION:

Parcel "M" a part of 5th Avenue a street through Lindsey Addition to the City of Winterset, Madison County, Iowa more particularly described as follows:

Beginning at the Southeast Corner of Lot 6 of Lindsey Addition to City of Winterset, Madison County, Iowa thence North 00°13'48" East 198.86 feet along the East line of said Lot 6 and the South Half of Lot 5 which is the West line of 5th Avenue right-of-way; thence South 89°38'55" East 60.08 feet to a point on the West line of Lot 8 of said Lindsey Addition; thence South 00°13'48" West 199.19 feet to the Southwest Corner of Lot 7, Lindsey Addition; thence North 89°19'09" West 60.08 feet along the North line of Husky Drive to the Point of Beginning containing 0.275 acres

