



Document 2015 3764

Book 2015 Page 3764 Type 06 043 Pages 1
Date 12/22/2015 Time 9:43:26AM
Rec Amt \$7.00

INDX ✓
ANNO
SCAN

LISA SMITH, COUNTY RECORDER
MADISON COUNTY IOWA

CHEK

Daniels Land Surveying, 22598 18th Avenue, New Virginia, IA 50210, 515-577-2583

UNITED STATES PUBLIC LAND CORNER CERTIFICATE OF

Land Survey Monuments situated in Section 13, Township 77 N, Range 27 W, of the 5th P.M., Madison County, Iowa. Previously recorded in n.a. in County Recorders Office. (book, page, document number, etc.)

(Show reason for preparing this certificate, the evidence and detailed procedures used in establishing the corner positions and monumentation found or placed.)

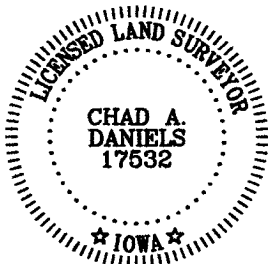
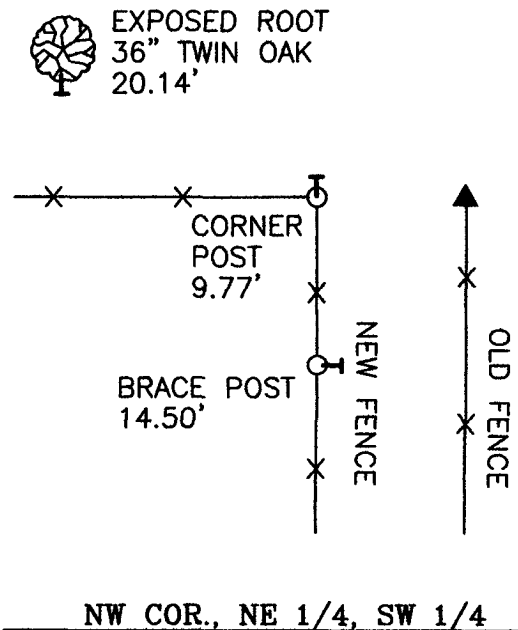
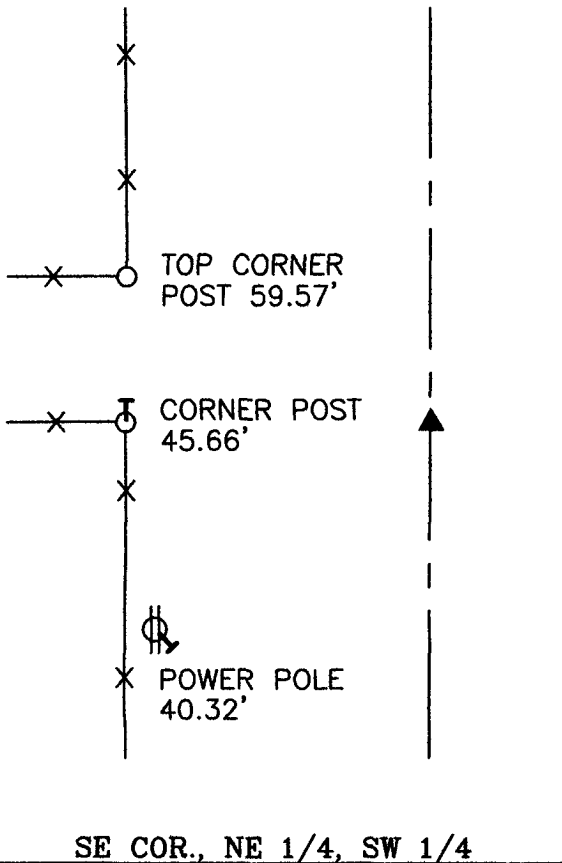
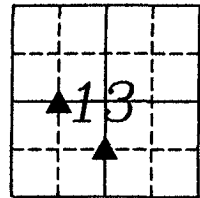
Monument Description and Remarks:

SE COR., NE 1/4, SW 1/4: Set 1/2" red plastic capped rebar, #17532 midpoint and online between found 1/4 corners.
NW COR., NE 1/4, SW 1/4: Set 1/2" red plastic capped rebar, #17532 midpoint and online between found 1/4 corners.

PLAN VIEW

(Show a minimum of three reference ties to durable physical objects, relevant monuments and physical conditions that will enable recovery of the corner.)

ALL TIES TO 30d SPIKES UNLESS NOTED



I hereby certify that this land surveying document was prepared and the related survey work was performed by me or under my direct personal supervision and that I am a duly licensed Land Surveyor under the laws of the State of Iowa.

Signature: Chad A. Daniels Date: 12/18/2015

License number 17532
My license renewal date is December 31, 2016