



Document 2015 3751

Book 2015 Page 3751 Type 06 043 Pages 1  
Date 12/21/2015 Time 11:29:17AM  
Rec Amt \$7.00

INDX  
ANNO  
SCAN  
CHEK

LISA SMITH, COUNTY RECORDER  
MADISON COUNTY IOWA

Prepared By: **Abaci Consulting Inc.** 101 Northeast Circle Drive, Grimes IA, 50111; (515)986-5048

# UNITED STATES PUBLIC LAND SURVEY CORNER CERTIFICATE

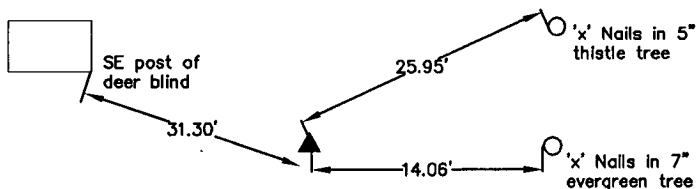
of

LAND SURVEY MONUMENTS SITUATED IN SECTION 27, TOWNSHIP 76 N, RANGE 27 W, of the Fifth Principal Meridian, Madison County, Iowa.

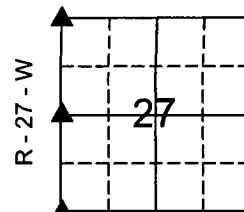
Monument Description & Remarks: NW Corner: Set on extension of NE corner to North 1/4 corner same distance on straight line.  
West Quarter Corner: prorated distances shown on book 2 page 281 from NW Corner to SW Corner set on straight line between.  
SW Corner: Found IDOT Cap, no ties of record.

## PLAN VIEW

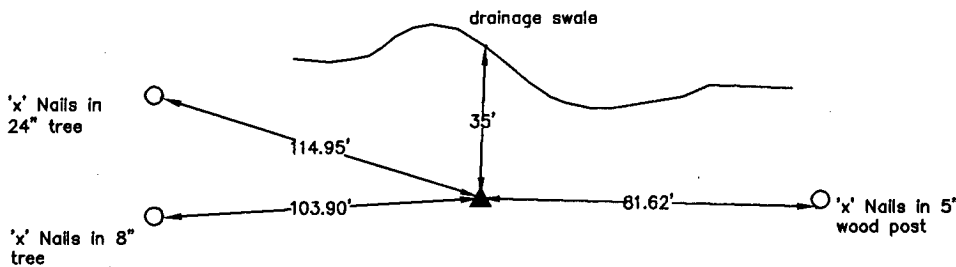
NW Corner  
Set 1/2" IR YC 15982



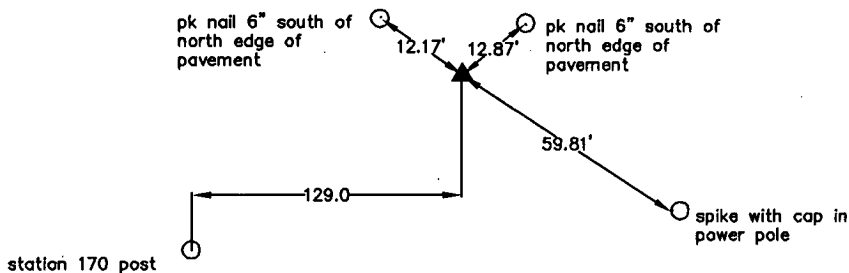
T - 76 - N



W 1/4 Corner  
Set 1/2" IR YC 15982



SW Corner  
Found IDOT Cap in center of road

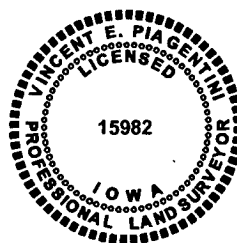


I HEREBY CERTIFY THAT THIS SURVEYING DOCUMENT WAS PREPARED AND THE RELATION WORK WAS PERFORMED BY ME OR UNDER MY DIRECT PERSONAL SUPERVISION, AND THAT I AM A DULY LICENSED PROFESSIONAL LAND SURVEYOR UNDER THE LAWS OF THE STATE OF IOWA.

*Vincent E. Piagentini*  
VINCENT E. PIAGENTINI, IOWA LIC. NO. 15982 DATE 12/17/15

MY LICENSE RENEWAL DATE IS DECEMBER 31, 2016

ADDITIONAL PAGES CERTIFIED (NONE UNLESS INDICATED HERE)  
THIS SHEET ONLY



### CORNERS TO BE INDEXED:

CORNER	SECTION	TWP	RANGE
NW	27	T76N	R27W
NE	28	T76N	R27W
SE	21	T76N	R27W
SW	22	T76N	R27W
W1/4	27	T76N	R27W
E1/4	28	T76N	R27W
SW	27	T76N	R27W
NW	34	T76N	R27W
NE	33	T76N	R27W
SE	28	T76N	R27W