



Document 2015 1061

Book 2015 Page 1061 Type 06 043 Pages 1  
Date 4/27/2015 Time 10:46 AM  
Rec Amt \$7.00

INDX  
ANNO  
SCAN  
CHEK

LISA SMITH, COUNTY RECORDER  
MADISON COUNTY IOWA

Daniels Land Surveying, 22598 18th Avenue, New Virginia, IA 50210, 515-577-2583

# UNITED STATES PUBLIC LAND CORNER CERTIFICATE OF

Land Survey Monuments situated in Section 8, Township 76 N, Range 26 W, of the 5th P.M., Madison County, Iowa. Previously recorded in n.a. in County Recorders Office. (book, page, document number, etc.)

(Show reason for preparing this certificate, the evidence and detailed procedures used in establishing the corner positions and monumentation found or placed.)

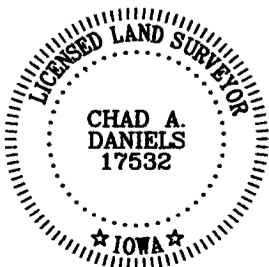
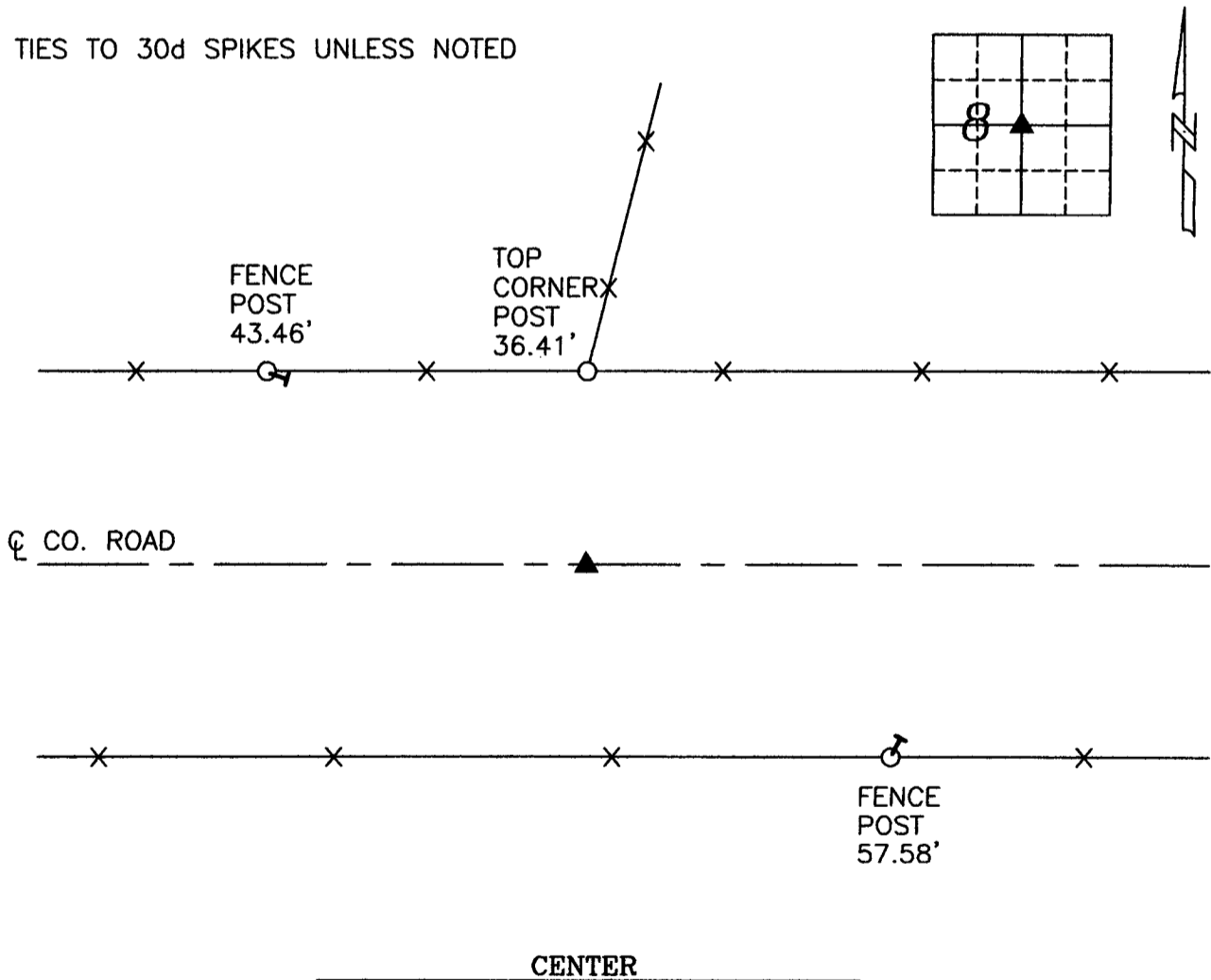
### Monument Description and Remarks:

Set 1/2" x 24" red plastic capped rebar, #17532 by doubling distance from E 1/4 Corner through the SE Cor., SW 1/4, NE 1/4.

## PLAN VIEW

(Show a minimum of three reference ties to durable physical objects, relevant monuments and physical conditions that will enable recovery of the corner.)

ALL TIES TO 30d SPIKES UNLESS NOTED



I hereby certify that this land surveying document was prepared and the related survey work was performed by me or under my direct personal supervision and that I am a duly licensed Land Surveyor under the laws of the State of Iowa.

Signature: Chad A. Daniels Date: 4/22/2015

License number 17532  
My license renewal date is December 31, 2016