



Document 2015 849

Book 2015 Page 849 Type 06 026 Pages 1

Date 4/03/2015 Time 3:55 PM

Rec Amt \$7.00

INDX
ANNO
SCAN
CHEK

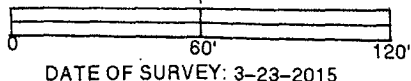
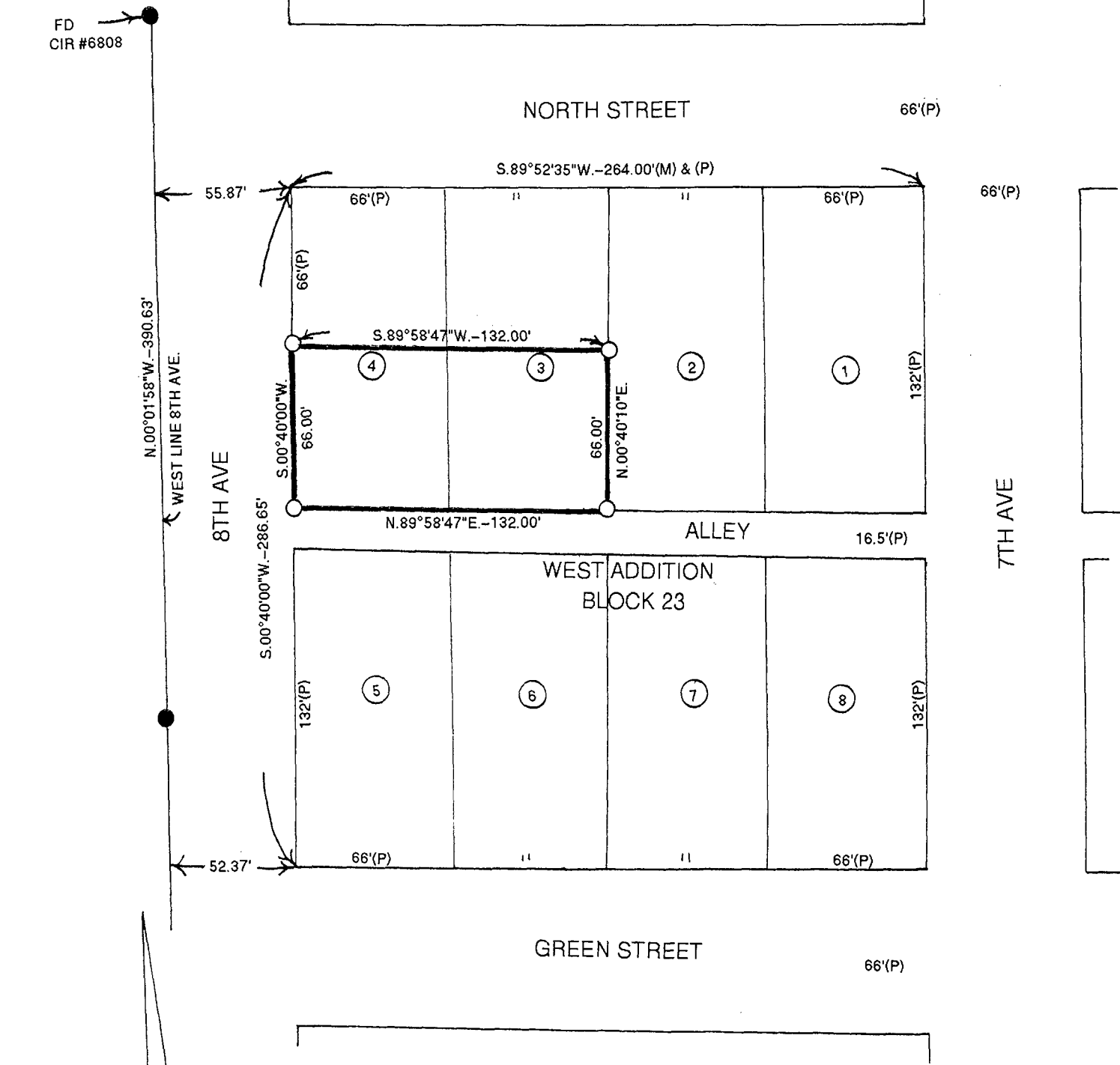
LISA SMITH, COUNTY RECORDER
MADISON COUNTY IOWA

VANCE & HOCHSTETLER, P.C. • CONSULTING ENGINEERS • WINTERSET, IOWA 50273

CHARLES T. VANCE • 110 WEST GREEN ST., WINTERSET, IOWA • (515) 462-3995

JAMES M. HOCHSTETLER • 110 WEST GREEN ST., WINTERSET, IOWA • FAX: (515) 462-9845

PLAT OF SURVEY OF SOUTH HALF OF LOT 3 AND LOT 4 OF BLOCK 23
OF WEST ADDITION TO CITY OF WINTERSET, IOWA
OWNED BY MICHAEL P. ELLER



DATE OF SURVEY: 3-23-2015

- CAPPED IRON ROD (CIR) #6808 SET
- CIR #5041 FOUND
- (M) MEASURED DISTANCE
- (P) PLATTED DIMENSION

LICENSED LAND SURVEYOR

J. M.
HOCHSTETLER
#6808

IOWA

I hereby certify that this land surveying document was prepared and the related survey work was performed by me or under my direct personal supervision and that I am a duly licensed Land Surveyor under the laws of the State of Iowa.

J. M. Hochstetler

J. M. HOCHSTETLER
License number 6808 Date 3/31/15
My license renewal date is December 31, 2015
Pages or sheets covered by this seal: 1