



Document 2015 385

Book 2015 Page 385 Type 06 043 Pages 1
Date 2/09/2015 Time 2:87 PM
Rec Amt \$7.00

INDX
ANNO
SCAN

LISA SMITH, COUNTY RECORDER
MADISON COUNTY IOWA

CHEK

PREPARED BY & RETURN TO MIKE SCHULTE, SNYDER & ASSOCIATES, INC. 1751 MADISON AVENUE, COUNCIL BLUFFS, IOWA 51503 (712) 322-3202

UNITED STATES PUBLIC LAND SURVEY CORNER CERTIFICATE OF

Land Survey Monuments situated in Section 25, Township 74, Range 29, of the Fifth Principal Meridian, MADISON, County, Iowa. Previously recorded in BOOK 1, PAGE 638 in County Recorder's Office.
(book, page, document number, ect.)

(Show reason for preparing this certificate, the evidence and detailed procedures used in establishing the corner positions and monumentation found or placed.)

Monument Description and Remarks:

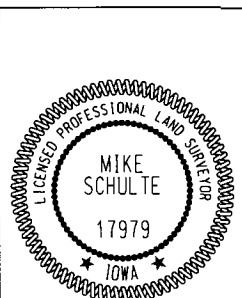
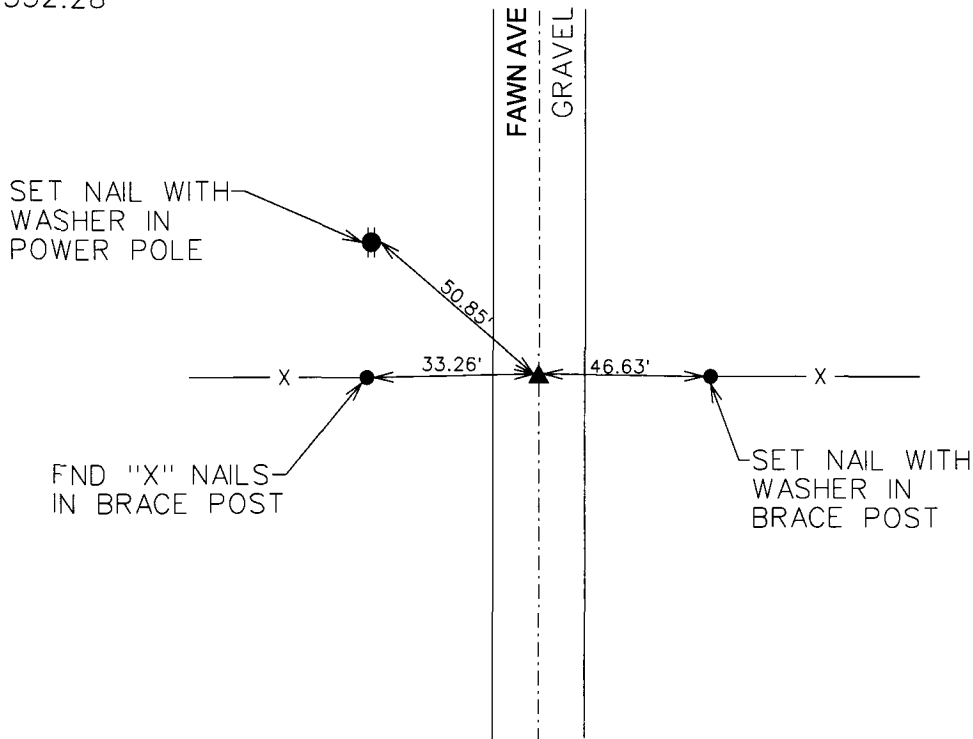
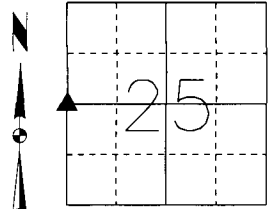
W 1/4 CORNER - USED A METAL DETECTOR AND REMAINING TIES TO LOCATE THE MONUMENT. FOUND 1/2" REBAR WITH UNREADABLE YELLOW PLASTIC CAP 1" DEEP. SECTION CORNER IS BEING RETIED DUE TO MISSING TIES.

Plan-View

(Show a minimum of three reference ties to durable physical objects, relevant monuments and physical conditions that will enable recovery of the corner.)

SPC IA SOUTH
US SURVEY FEET
IA RTN DERRIVED
NAD 83(CORS96)
EPOCH 2002.00
N: 430089.30
E: 1462332.28

W 1/4 CORNER
FOUND 1/2" REBAR WITH
UNREADABLE YELLOW PLASTIC CAP
1" DEEP



I hereby certify that this land surveying document was prepared and the related survey work was performed by me or under my direct personal supervision and that I am a duly licensed Professional Land Surveyor under the laws of the State of Iowa.
Mike Schulte 2015-02-06
Mike Schulte, PLS Date
License Number 17979
My License Renewal Date is December 31, 2015
Pages or sheets covered by this seal:
SHEET 1 OF 1

List Corners to be Indexed			
Corners	Section	Twp	Range
W 1/4 COR	25	74	29
E 1/4 COR	26	74	29