



Document 2015 364

Book 2015 Page 364 Type 06 043 Pages 1

Date 2/09/2015 Time 1:43 PM

Rec Amt \$7.00

✓ INDX
✓ ANNO
SCAN

LISA SMITH, COUNTY RECORDER
MADISON COUNTY IOWA

CHEK

PREPARED BY & RETURN TO MIKE SCHULTE, SNYDER & ASSOCIATES, INC. 1751 MADISON AVENUE, COUNCIL BLUFFS, IOWA 51503 (712) 322-3202

UNITED STATES PUBLIC LAND SURVEY CORNER CERTIFICATE OF

Land Survey Monuments situated in Section 7, Township 74, Range 28, of the Fifth Principal Meridian, MADISON, County, Iowa. Previously recorded in N/A in County Recorder's Office.
(book, page, document number, ect.)

(Show reason for preparing this certificate, the evidence and detailed procedures used in establishing the corner positions and monumentation found or placed.)

Monument Description and Remarks:

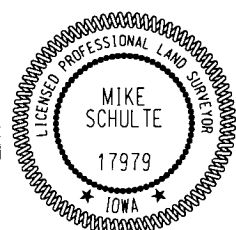
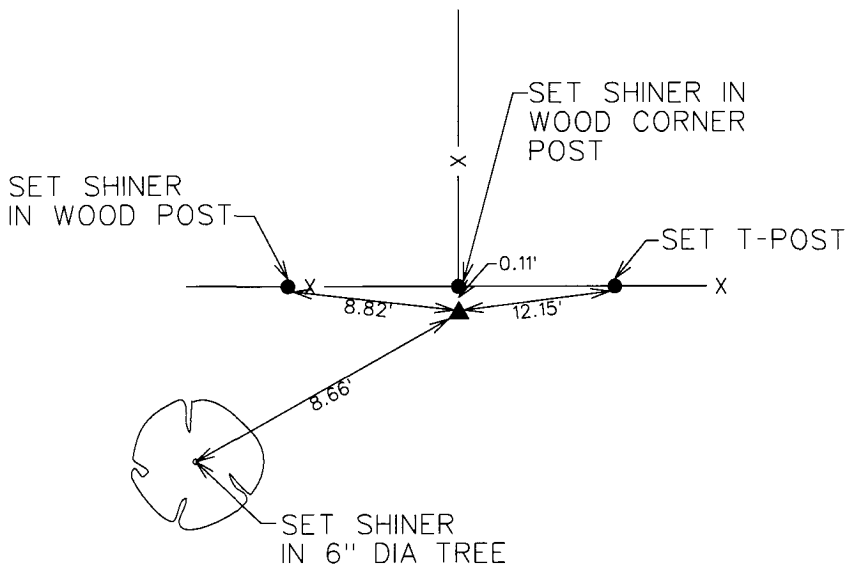
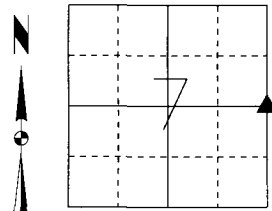
E 1/4 CORNER - NO RECORDED CERTIFICATE OF RECORD. AREA LANDS IN A CUT AREA WHERE OLD ROAD BED WAS. EXISTING CORNER POST FITS CENTERLINE ROAD BED WELL. FENCES NORTH FIT WELL. VERIFIED POSITION OF POST WITH SURROUNDING CORNERS. ACCEPTED POSITION OF CORNER POST AS EVIDENCE OF OBLITERATED CORNER. SET 1/2" REBAR WITH YELLOW PLASTIC CAP #17979.

Plan-View

(Show a minimum of three reference ties to durable physical objects, relevant monuments and physical conditions that will enable recovery of the corner.)

SPC IA SOUTH
US SURVEY FEET
IA RTN DERRIVED
NAD 83(CORS96)
EPOCH 2002.00
N: 445736.27
E: 1472847.99
ELEV: 1164.27

E 1/4 CORNER
SET 1/2" REBAR WITH
YELLOW PLASTIC CAP #17979



I hereby certify that this land surveying document was prepared and the related survey work was performed by me or under my direct personal supervision and that I am a duly licensed Professional Land Surveyor under the laws of the State of Iowa.
Mike Schulte 2015-02-06
Mike Schulte, PLS Date
License Number 17979
My License Renewal Date is December 31, 2015
Pages or sheets covered by this seal:
SHEET 1 OF 1

List Corners to be Indexed			
Corners	Section	Twp	Range
E 1/4 COR	7	74	28
W 1/4 COR	8	74	28