



Document 2015 363

Book 2015 Page 363 Type 06 043 Pages 1

Date 2/09/2015 Time 1:42 PM

Rec Amt \$7.00

✓ INDX  
✓ ANNO  
SCAN  
CHEK

LISA SMITH, COUNTY RECORDER  
MADISON COUNTY IOWA

PREPARED BY & RETURN TO MIKE SCHULTE, SNYDER & ASSOCIATES, INC. 1751 MADISON AVENUE, COUNCIL BLUFFS, IOWA 51503 (712) 322-3202

### UNITED STATES PUBLIC LAND SURVEY CORNER CERTIFICATE OF

Land Survey Monuments situated in Section 7, Township 74, Range 28, of the Fifth Principal Meridian, MADISON, County, Iowa. Previously recorded in BOOK 2006, PAGE 3050 in County Recorder's Office. (book, page, document number, ect.)

(Show reason for preparing this certificate, the evidence and detailed procedures used in establishing the corner positions and monumentation found or placed.)

#### Monument Description and Remarks:

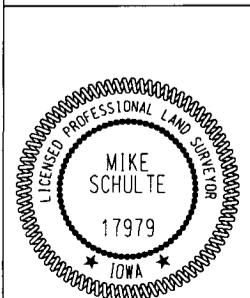
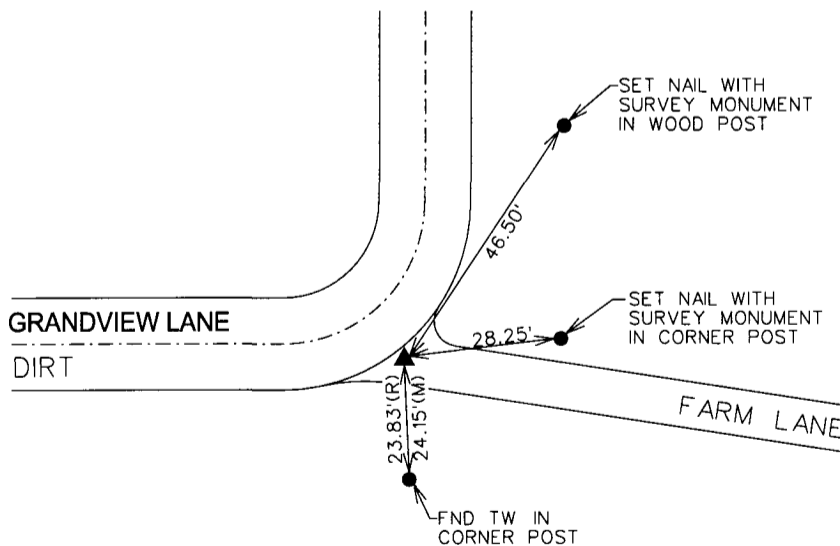
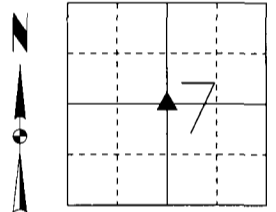
CENTER - USED REMAINING TIES AND METAL DETECTOR TO LOCATE THE CORNER. FOUND 3/4" REROD WITH ALUMINUM CAP #15745 3" DEEP. SECTION CORNER IS IS BEING RETIED DUE TO MISSING TIES.

#### Plan-View

(Show a minimum of three reference ties to durable physical objects, relevant monuments and physical conditions that will enable recovery of the corner.)

SPC IA SOUTH  
US SURVEY FEET  
IA RTN DERRIVED  
NAD 83(CORS96)  
EPOCH 2002.00  
N: 445737.01  
E: 1470216.10  
ELEV: 1192.14

CENTER  
FOUND 3/4" REROD  
ALUMINUM CAP 15745  
3" DEEP



I hereby certify that this land surveying document was prepared and the related survey work was performed by me or under my direct personal supervision and that I am a duly licensed Professional Land Surveyor under the laws of the State of Iowa.  
*Mike Schulte* 2015-02-06  
Mike Schulte, PLS Date  
License Number 17979  
My License Renewal Date is December 31, 2015  
Pages or sheets covered by this seal:  
SHEET 1 OF 1

List Corners to be Indexed

Corners	Section	Twp	Range
CENTER	7	74	28