



Document 2015 361

Book 2015 Page 361 Type 06 043 Pages 1

Date 2/09/2015 Time 1:40 PM

Rec Amt \$7.00

INDX  
ANNO  
SCAN

LISA SMITH, COUNTY RECORDER  
MADISON COUNTY IOWA

CHEK

PREPARED BY & RETURN TO MIKE SCHULTE, SNYDER & ASSOCIATES, INC. 1751 MADISON AVENUE, COUNCIL BLUFFS, IOWA 51503 (712) 322-3202

### UNITED STATES PUBLIC LAND SURVEY CORNER CERTIFICATE OF

Land Survey Monuments situated in Section 25, Township 74, Range 29, of the Fifth Principal Meridian, MADISON, County, Iowa. Previously recorded in BOOK 1, PAGE 638 in County Recorder's Office. (book, page, document number, ect.)

(Show reason for preparing this certificate, the evidence and detailed procedures used in establishing the corner positions and monumentation found or placed.)

Monument Description and Remarks:

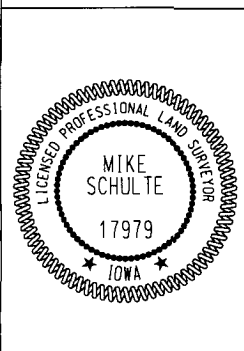
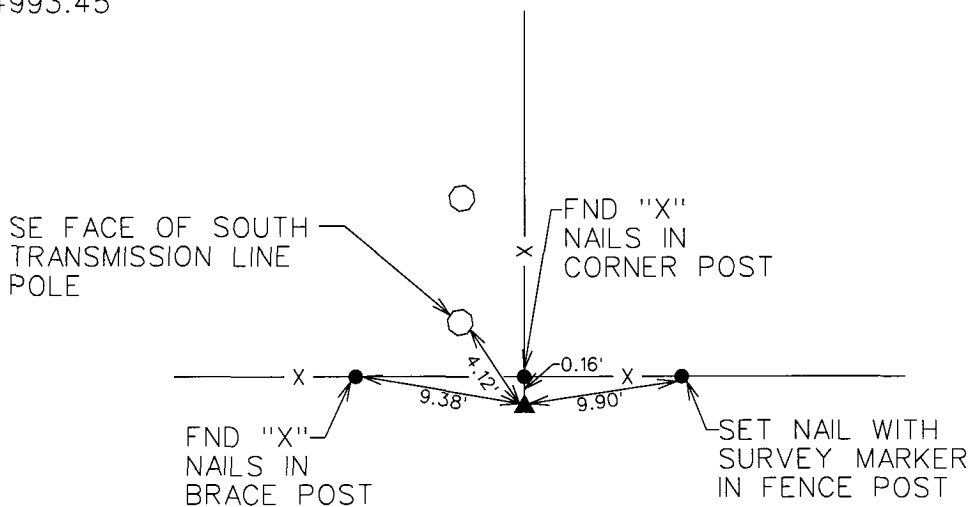
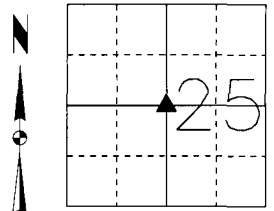
CENTER - USED A METAL DETECTOR AND REMAINING TIES TO LOCATE THE MONUMENT. FOUND 1/2" REBAR WITH YELLOW PLASTIC CAP #6808 13" EXPOSED. SECTION CORNER IS BEING RETIED DUE TO MISSING TIES.

Plan-View

(Show a minimum of three reference ties to durable physical objects, relevant monuments and physical conditions that will enable recovery of the corner.)

SPC IA SOUTH  
US SURVEY FEET  
IA RTN DERRIVED  
NAD 83(CORS96)  
EPOCH 2002.00  
N: 430030.64  
E: 1464993.45

CENTER  
FOUND 1/2" REBAR WITH  
YELLOW PLASTIC CAP #6806  
13" EXPOSED



I hereby certify that this land surveying document was prepared and the related survey work was performed by me or under my direct personal supervision and that I am a duly licensed Professional Land Surveyor under the laws of the State of Iowa.  
*Mike Schulte* 2015-02-06  
Mike Schulte, PLS Date  
License Number 17979  
My License Renewal Date is December 31, 2015  
Pages or sheets covered by this seal:  
SHEET 1 OF 1

List Corners to be Indexed

Corners	Section	Twp	Range
CENTER	25	74	29