



Document 2015 302

Book 2015 Page 302 Type 06 043 Pages 1

Date 2/04/2015 Time 3:16 PM

Rec Amt \$.00

INDX ✓
ANNO
SCAN
CHEK

LISA SMITH, COUNTY RECORDER
MADISON COUNTY IOWA

Prepared By: Michael James Hackett, Madison County Engineer's Office, 1105 E. Court Ave., Winterset, Ia. 50273, Tel. (515) 462-1136

UNITED STATES PUBLIC LAND SURVEY CORNER CERTIFICATE OF

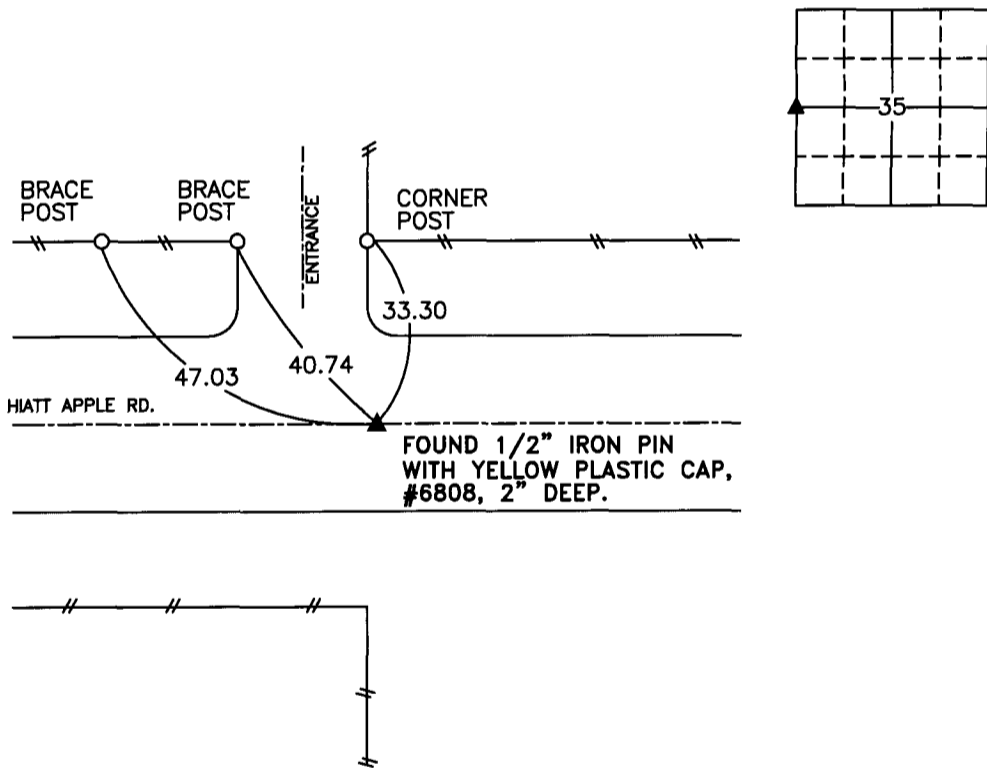
Land Survey Monuments situated in Section 35, Township 75 N, Range 27 W, of the Fifth Principal Meridian, Madison County, Iowa.
Previously recorded in N.A. in County Recorder's Office.
(book, page, document number, etc.)

(Show reason for preparing this certificate, the evidence and detailed procedures used in establishing the corner positions and monumentation found or placed.)

Monument Description and Remarks: Found 1/2" iron pin with yellow plastic cap, #6808, 2 inches deep in county highway, used in a survey recorded in Book 2, Page 444 on file in the Madison County Recorders Office. Traversed setion 35 to verify location of the corner. Accepted position. This certificate was prepared because their was no previously recorded ties for the section corner.

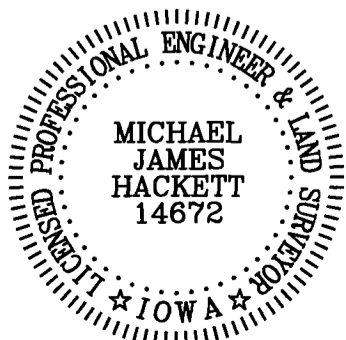
PLAN VIEW

(Show a minimum of three reference ties to durable physical objects, relevant monuments and physical conditions that will enable recovery of the corner.)



SW. COR., NW. 1/4 SEC. 35

NOTE: ALL TIES TO "X" NAILS UNLESS NOTED



I hereby certify that this land surveying document was prepared and the related survey work was performed by me or under my direct personal supervision and that I am a duly Licensed Land Surveyor under the laws of the State of Iowa.

Signed [Signature] Date 2-4-2015
Michael James Hackett

Iowa license number 14672.
My license renewal date is 12/31/2016.
Pages covered by this seal: 1.