

INDX ✓  
 ANNO ✓  
 SCAN  
 CHEK

ISA SMITH, COUNTY RECORDER  
 MADISON COUNTY IOWA

PREPARED BY & RETURN TO TERRY COADY, SNYDER & ASSOCIATES, INC. 2727 SW SNYDER ROAD, ANKENY, IOWA 50023 (515) 964-2020

### UNITED STATES PUBLIC LAND SURVEY CORNER CERTIFICATE OF

Land Survey Monuments situated in Section 32, Township 76N, Range 27W, of the Fifth Principal Meridian, MADISON County, Iowa. Previously recorded in BOOK 1, PAGE 80 in County Recorder's Office.  
 (book, page, document number, ect.)

(Show reason for preparing this certificate, the evidence and detailed procedures used in establishing the corner positions and monumentation found or placed.)

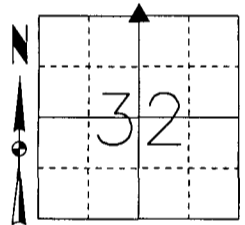
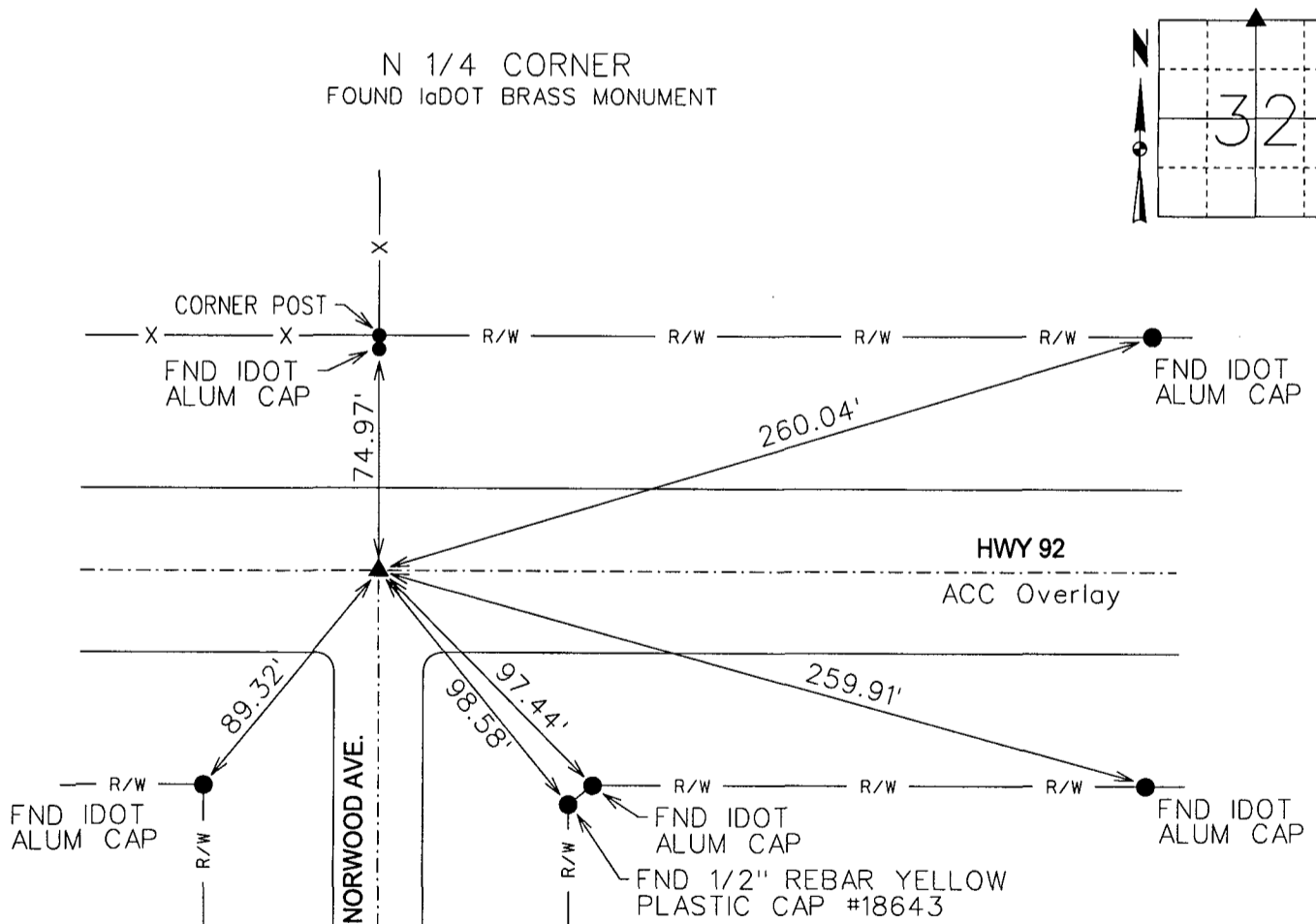
Monument Description and Remarks:

NORTH 1/4 CORNER SECTION 32-76-27

EXISTING CORNER CERTIFICATE RECORDED IN BOOK 1, PAGE 80 OF THE MARION COUNTY RECORDER'S OFFICE INDICATED THAT THE NORTH 1/4 CORNER IS MONUMENTED WITH A FROST NAIL. ALL PREVIOUS TIES NO LONGER EXIST. USED IOWA DOT ACQUISITION PLATS TO LOCATE SECTION CORNER AND FOUND AN IOWA DOT BRASS MONUMENT IN ROAD. VERIFIED LOCATION OF MONUMENT WITH IOWA DOT ACQUISITION PLAT AND ACCEPTED MONUMENT AS SECTION CORNER. THIS CERTIFICATE IS BEING FILED BECAUSE THERE WAS NO CORNER CERTIFICATE FOR THIS FOUND MONUMENT AND THERE ARE NO LONGER THREE VALID TIES OF RECORD.

Plan-View

(Show a minimum of three reference ties to durable physical objects, relevant monuments and physical conditions that will enable recovery of the corner.)



TLC 1/5/2015 NOTE: ALL DISTANCES MEASURED HORIZONTAL UNLESS OTHERWISE NOTED.  
 P:\Section\_Corner\S&A\_Section\_Certificate\TWP\_RNG\_SEC\_PROJECT\_NUM\76-27-32\_M.dgn

LICENSED PROFESSIONAL LAND SURVEYOR

TERRY COADY

18643

IOWA

I hereby certify that this land surveying document was prepared and the related survey work was performed by me or under my direct personal supervision and that I am a duly licensed Professional Land Surveyor under the laws of the State of Iowa.

*Terry Coady* 1-5-2015  
 Terry Coady, PLS Date

License Number 18643  
 My License Renewal Date is December 31, 2015

Pages or sheets covered by this seal:  
 SHEET 1 OF 1

List Corners to be Indexed

Corners	Section	Twp	Range
N 1/4	32	76N	27W
S 1/4	29	76N	27W