



Document 2014 1973

Book 2014 Page 1973 Type 06 043 Pages 1

Date 8/08/2014 Time 2:53 PM

Rec Amt \$7.00

INDX ✓
ANNO
SCAN
CHEK

LISA SMITH, COUNTY RECORDER
MADISON COUNTY IOWA

PREPARED BY: CRAIG S. BOLDMAN 521 WEST GREEN STREET, WINTERSET, IA 50273 PHONE (515)462-9242

UNITED STATES PUBLIC LAND SURVEY CORNER CERTIFICATE

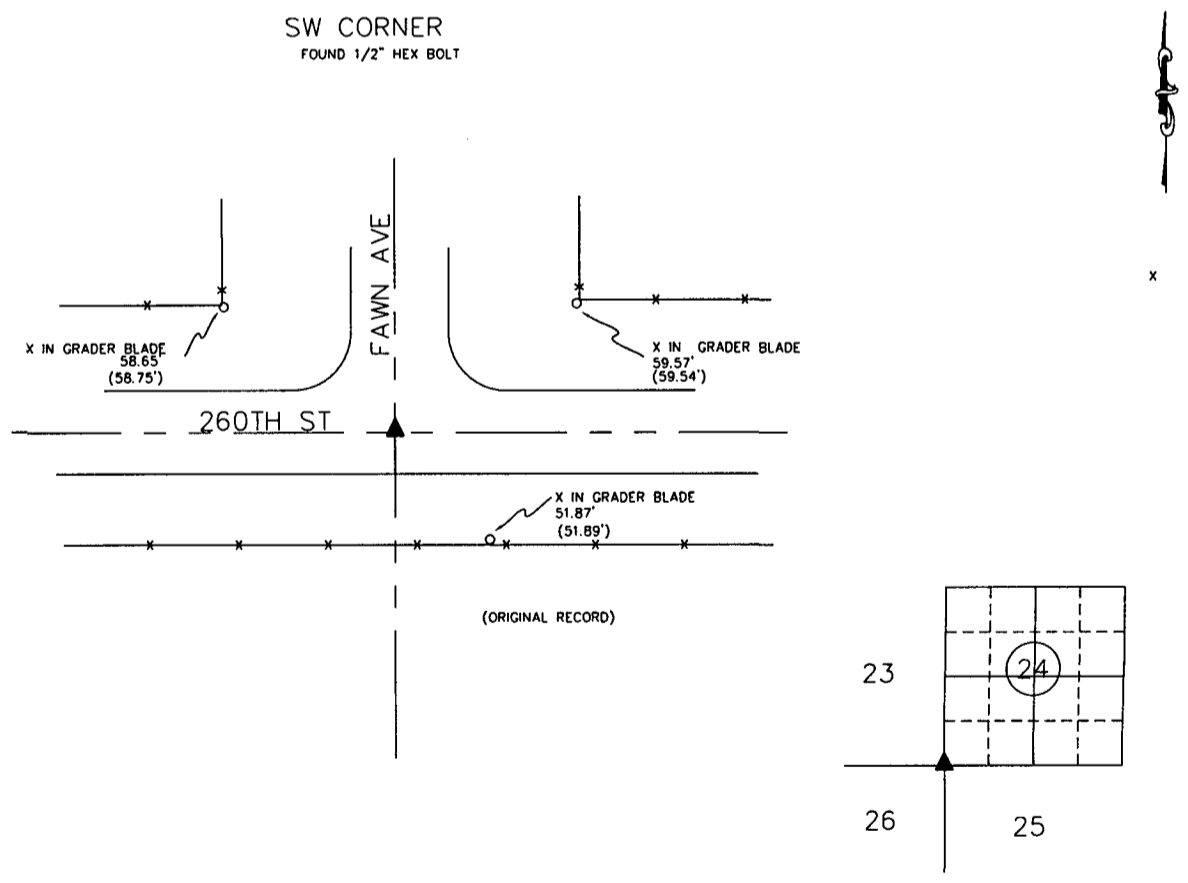
Land Survey Monuments situated in Section 24, Township 75, Range 29, the Fifth Principal Meridian, Madison County, Iowa.
Previously recorded in None found in County Recorder's Office

(Show reason for preparing this certificate, the evidence and detailed procedures used in establishing the corner positions & monumentation found or placed)

Monument Description and Remarks:

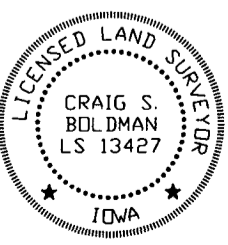
1987 county engineer records indicate a 5/8" rebar was found by RLS 7995. Using ties found a 1/2" hex bolt about 8" deep. Accepted bolt as section corner. Reason for certificate is that none was found

PLAN-VIEW



I HEREBY CERTIFY THAT THIS LAND SURVEYING DOCUMENT WAS PREPARED AND THE RELATED SURVEY WORK WAS PERFORMED BY ME OR UNDER MY DIRECT PERSONAL SUPERVISION AND THAT I AM A DULY LICENSED LAND SURVEYOR UNDER THE LAWS OF THE STATE OF IOWA

SIGNATURE Craig S. Boldman
CRAIG S. BOLDMAN
DATE: Aug 8, 2014 LICENSE NO 13427
MY RENEWAL DATE IS DECEMBER 31, 2014
COVERS SHEETS 1



CORNERS TO BE INDEXED

| Corners | Section | Township | Range |
|---------|---------|----------|-------|
| SW | 24 | 75 | 29 |
| SE | 23 | 75 | 29 |
| NE | 26 | 75 | 29 |
| NW | 25 | 75 | 29 |

Project No. 14038