



Document 2014 1824

Book 2014 Page 1824 Type 06 043 Pages 1
Date 7/28/2014 Time 12:21 PM
Rec Amt \$.00

INDX ✓
ANNO ✓
SCAN
CHEK

LISA SMITH, COUNTY RECORDER
MADISON COUNTY IOWA

Prepared By: Michael James Hackett, Madison County Engineer's Office, 1105 E. Court Ave., Winterset, Ia. 50273, Tel. (515) 462-1136

UNITED STATES PUBLIC LAND SURVEY CORNER CERTIFICATE OF

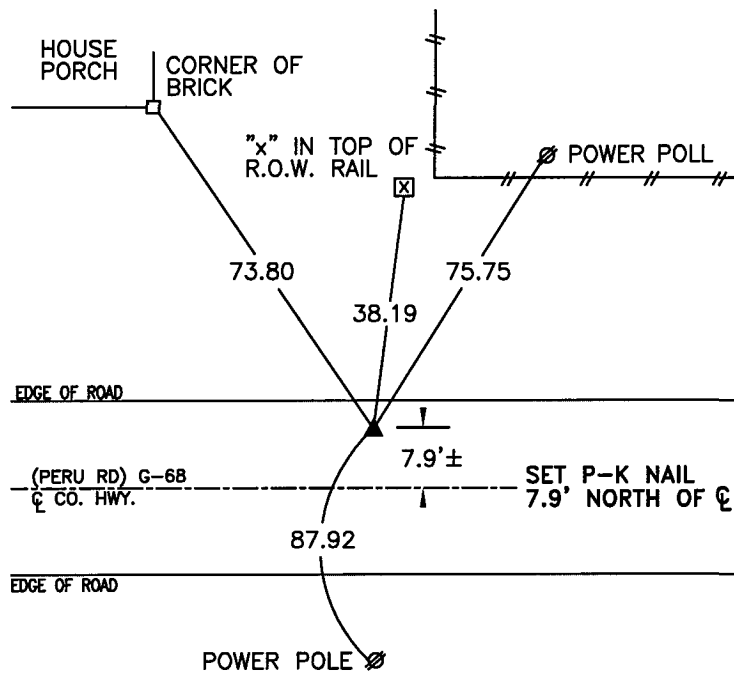
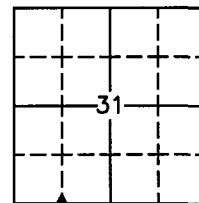
Land Survey Monuments situated in Section 31, Township 75 N, Range 27 W, of the Fifth Principal Meridian, Madison County, Iowa. Previously recorded in Book 2007, Page 3563 in County Recorder's Office. (book, page, document number, etc.)

(Show reason for preparing this certificate, the evidence and detailed procedures used in establishing the corner positions and monumentation found or placed.)

Monument Description and Remarks: Previous monument disturbed during Madison County highway project FM-C061(93)--55-61 A.C.C. pavement resurfacing and reconstruction. Set P.K. nail in A.C.C. pavement. The corner position was established by using existing found monument, existing ties, and reestablished ties after the resurfacing and reconstruction. Accepted position.

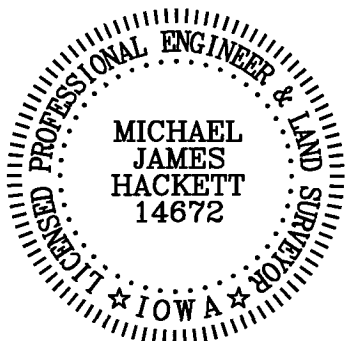
PLAN VIEW

(Show a minimum of three reference ties to durable physical objects, relevant monuments and physical conditions that will enable recovery of the corner.)



SE. COR., SW. 1/4 SW. 1/4 SEC. 31

NOTE: ALL TIES TO "X" NAILS UNLESS NOTED



I hereby certify that this land surveying document was prepared and the related survey work was performed by me or under my direct personal supervision and that I am a duly Licensed Land Surveyor under the laws of the State of Iowa.

Signed Michael James Hackett Date 7-28-2014
Michael James Hackett

Iowa license number 14672.
My license renewal date is 12/31/2014.
Pages covered by this seal: 1.