



Document 2014 1665

Book 2014 Page 1665 Type 06 043 Pages 1
Date 7/11/2014 Time 10:38 AM
Rec Amt \$7.00

INDX ✓
ANNO ✓
SCAN ✓
CHEK

LISA SMITH, COUNTY RECORDER
MADISON COUNTY IOWA

VANCE & HOCHSTETLER, P.C., CONSULTING ENGINEERS, WINTERSSET, IOWA (515) 462-3995
CHARLES T. VANCE, 110 West Green St., Winterset, Iowa, 50273
JAMES M HOCHSTETLER, 110 West Green St., Winterset, Iowa 50273

UNITED STATES PUBLIC LAND SURVEY CORNER CERTIFICATE

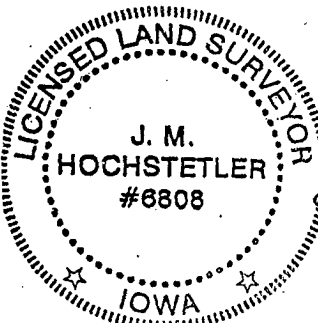
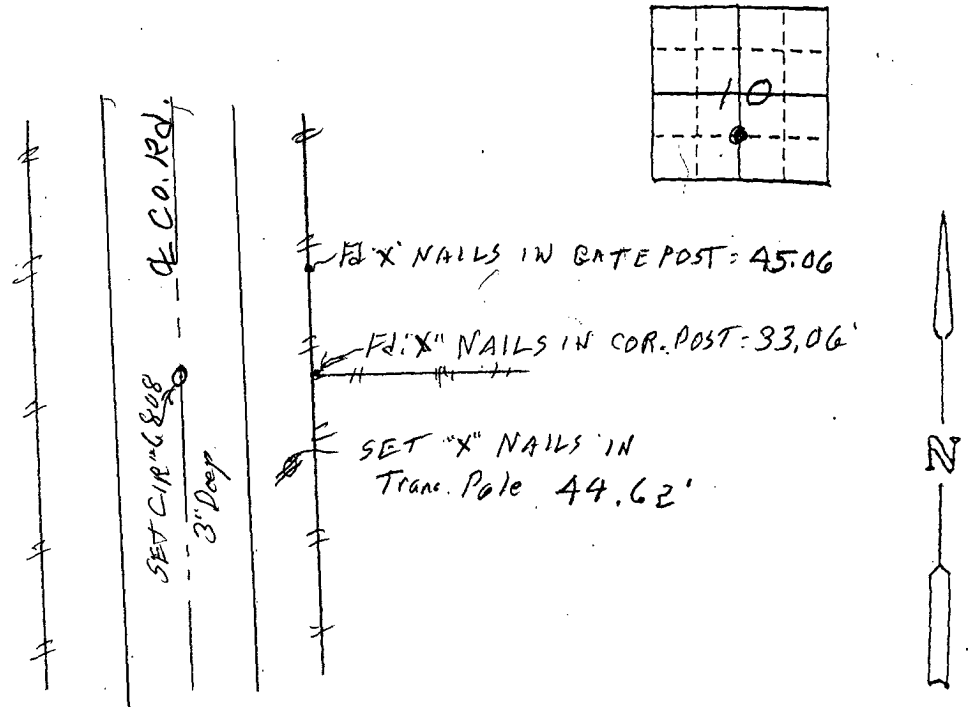
Land Survey Monuments situated in Section 10 OF 10 Township 75 N, Range 27 W, of the Fifth Principal Meridian, MADISON County, Iowa.
Previously recorded in Book 1 Page 388 in County Recorder's Office.
(book, page, document number, etc.)

(Show reason for preparing this certificate, the evidence and detailed procedures used in establishing the the corner positions and monumentation found or placed.)

Monument Description and Remarks: NE COR. SE 1/4 SW 1/4 - Set yellow CIR #6808 at centerline of County Road in line with "property line fence East. Tied by Morrissey in 1996 as a "Stone With P-K Nail in top". Found two old ties and dug but could not find stone or Nail. Set CIR based on two ties, old property line fence & road centerline.

PLAN - VIEW

(Show a minimum of three reference ties to durable physical objects, relevant monuments and physical conditions that will enable recovery of the corner.)



I hereby certify that this land surveying document was prepared and the related survey work was performed by me or under my direct personal supervision and that I am a duly licensed Land Surveyor under the laws of the State of Iowa.

J.M. Hochstetler
J.M. HOCHSTETLER
License number 6808 Date 7/5/14
My license renewal date is December 31, 2015
Pages or sheets covered by this seal: 1

List Corners to be Indexed

Corners	Section	Twp	Range
NE COR. SE 1/4 SW 1/4	10	75 N	27 W