



Document 2014 1664

Book 2014 Page 1664 Type 06 043 Pages 1

Date 7/11/2014 Time 10:37 AM

Rec Amt \$7.00

INDEX ✓  
ANNO ✓  
SCAN

LISA SMITH, COUNTY RECORDER  
MADISON COUNTY IOWA

CHEK

VANCE & HOCHSTETLER, P.C., CONSULTING ENGINEERS, WINTERSSET, IOWA (515) 462-3995  
CHARLES T. VANCE, 110 West Green St., Winterset, Iowa, 50273  
JAMES M HOCHSTETLER, 110 West Green St., Winterset, Iowa 50273

UNITED STATES PUBLIC LAND SURVEY CORNER CERTIFICATE

Land Survey Monuments situated in Section 33 OF 33 Township 74 N, Range 29 W, of the Fifth Principal Meridian, MADISON County, Iowa.  
Previously recorded in BOOK 2003 Page 367 in County Recorder's Office.  
(book, page, document number, etc.)

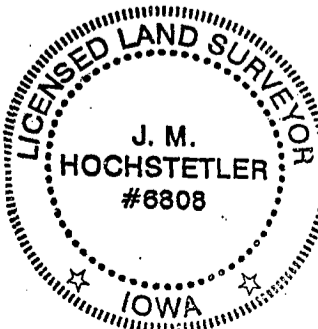
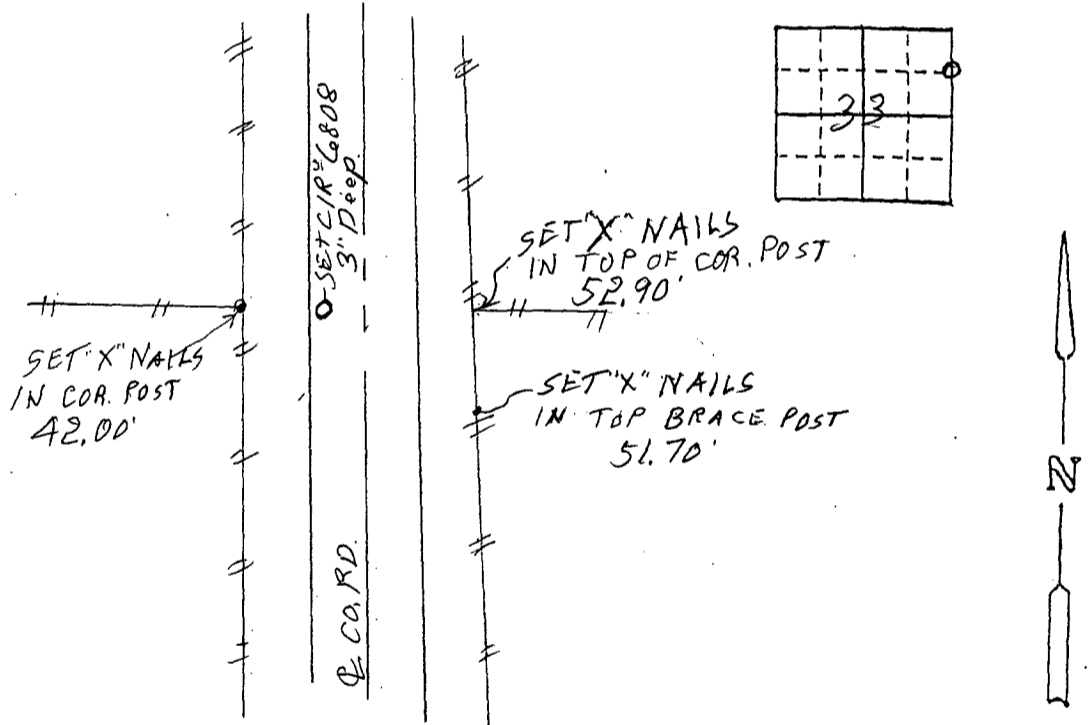
14-1045

(Show reason for preparing this certificate, the evidence and detailed procedures used in establishing the the corner positions and monumentation found or placed.)

Monument Description and Remarks: SE COR. NE 1/4 NE 1/4 - Set yellow C.I.R. #6808 at same spot where Boldman set a "track spike" in January 21, 2003. Point is at midpoint on line between found NE Cor and E 1/2 Cor. Could not find "Track Spike".

PLAN - VIEW

(Show a minimum of three reference ties to durable physical objects, relevant monuments and physical conditions that will enable recovery of the corner.)



I hereby certify that this land surveying document was prepared and the related survey work was performed by me or under my direct personal supervision and that I am a duly licensed Land Surveyor under the laws of the State of Iowa.

J.M. Hochstetler  
J.M. HOCHSTETLER  
License number 6808 Date 6/30/14  
My license renewal date is December 31, 2015  
Pages or sheets covered by this seal: 1

List Corners to be Indexed

Corners	Section	Twp	Range
SE COR. NE 1/4 NE 1/4	33	74 N	29 W