

DESCRIPTION FOR CONVEYANCE - PARCEL A

Parcel A of Section 17, Township 74 North, Range 26 West of the 5th P.M., Madison County, Iowa. All as shown on Plat of Survey, Drawing No. 2077.1-1 by Hiller Engineering. Said parcel contains 9.182 Acres, including 0.904 Acres of Public Road Right-of-Way.

DESCRIPTION AS SURVEYED - Parcel A

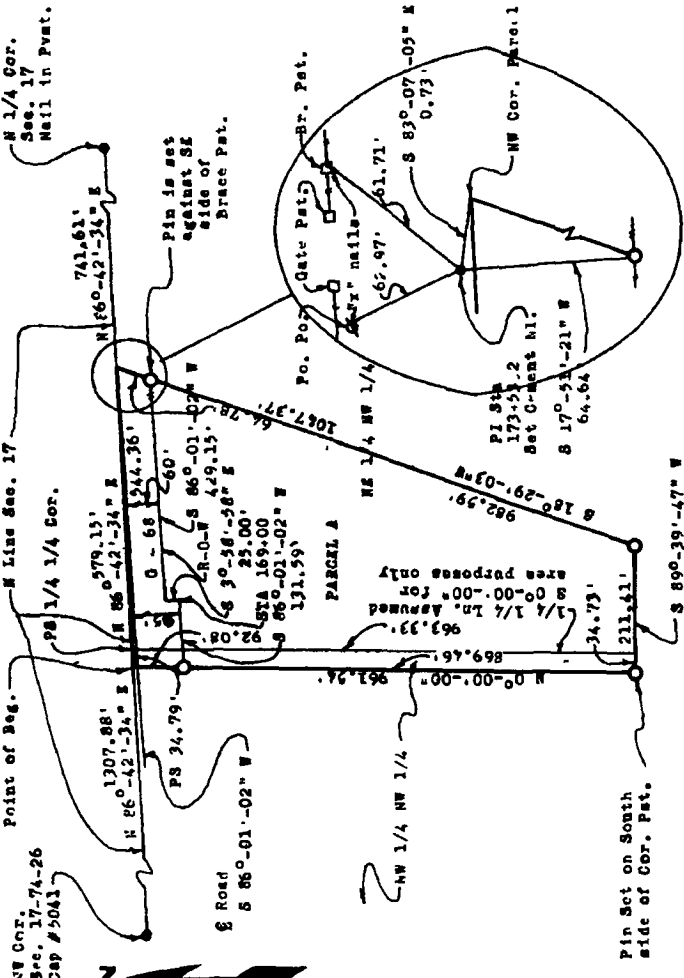
Commencing at the Northwest Corner of Section 17, Township 74 North, Range 26 West of the 5th P.M., Madison County, Iowa, thence N 86°-42'-34" E one thousand three hundred seven and eighty-eight hundredths feet (1307.88') to the Point of Beginning, said point being on the North line of said Sec. 17, thence N 86°-42'-34" E five hundred seventy-nine and fifteen hundredths feet (579.15') along the North line of Sec. 17, thence S 18°-29'-03" W one thousand forty-seven and thirty-seven hundredths feet (1047.37'), thence S 89°-39'-47" W two hundred forty-six and four hundredths feet (246.14'), thence N 06°-00'-00" nine hundred sixty-one and fifty-four hundredths feet (961.54') to the Point of Beginning. All as shown on Plat of Survey-7, Drawing No. 077.1-1 by Hiller Engineering. Said parcel contains 0.112 Ac. including 0.904 Ac. of Public Road Right-of-Way.

FILED NO. **2347**
 BOOK **2** PAGE **375**
 93 MAR 22 PM 12: 28
 MICHELLE UTSLER
 RECORDER
 MADISON COUNTY, IOWA

Fee \$5.00

DAVID M. HILLER, JRM
 IOWA
 PROFESSIONAL ENGINEER
 SURV.
 AND LAND SURVEYOR

I hereby certify that the Land Surveying document was prepared by me or under my direct personal supervision and that I am a duly Registered Land Surveyor under the laws of the State of Iowa.
 Signature: *[Signature]* Date: *Mar 13, 1993*
 David M. Hiller, P.E. Iowa Reg. No. 374
 My registration expires December 31, *1994*



Area Acres	NW 1/4 NW 1/4	NE 1/4 NW 1/4	Total
Total	0.767	8.415	9.182
R.O.W	0.073	0.831	0.904
Net	0.694	7.584	8.278

0' 200' 400' 600'

HILLER ENGINEERING CO
 Engineering & Surveying
 Iowa & Missouri
 5200 W. 130th St.
 Des Moines, Iowa 50312
 DRAWN AND CHECKED
 APPROVED *[Signature]*

B. F. MORTLAND, JR.
 TRURO, IA
 Plat of Survey of Parcel A in
 Sec. 17-74-26, Madison County, IA
 2077.1-1

Point of Beg. NW Cor. Sec. 17, 74-26 Cap #5043

PS 1/4 NW 1/4 Cor.

PS 34.79'

S 86°-01'-02" W

S 30°-58'-36" E

S 86°-01'-02" W

S 17°-53'-21" W

S 18°-29'-03" W

S 89°-39'-47" W

S 83°-07'-05" W

S 17°-53'-21" W

S 83°-07'-05" W

S 17°-53'-21" W

S 83°-07'-05" W

S 17°-53'-21" W

S 83°-07'-05" W

S 17°-53'-21" W

S 83°-07'-05" W

S 17°-53'-21" W

S 83°-07'-05" W

S 17°-53'-21" W

S 83°-07'-05" W

S 17°-53'-21" W

S 83°-07'-05" W

S 17°-53'-21" W

S 83°-07'-05" W

S 17°-53'-21" W

S 83°-07'-05" W

S 17°-53'-21" W

S 83°-07'-05" W

S 17°-53'-21" W

S 83°-07'-05" W

S 17°-53'-21" W

S 83°-07'-05" W

S 17°-53'-21" W

S 83°-07'-05" W

S 17°-53'-21" W

NW Cor. Sec. 17, 74-26 Cap #5043

PS 1/4 NW 1/4 Cor.

PS 34.79'

S 86°-01'-02" W

S 30°-58'-36" E

S 86°-01'-02" W

S 17°-53'-21" W

S 18°-29'-03" W

S 89°-39'-47" W

S 83°-07'-05" W

S 17°-53'-21" W

S 83°-07'-05" W

S 17°-53'-21" W

S 83°-07'-05" W

S 17°-53'-21" W

S 83°-07'-05" W

S 17°-53'-21" W

S 83°-07'-05" W

S 17°-53'-21" W

S 83°-07'-05" W

S 17°-53'-21" W

S 83°-07'-05" W

S 17°-53'-21" W

S 83°-07'-05" W

S 17°-53'-21" W

S 83°-07'-05" W

S 17°-53'-21" W

S 83°-07'-05" W

S 17°-53'-21" W

S 83°-07'-05" W

S 17°-53'-21" W

S 83°-07'-05" W

S 17°-53'-21" W

S 83°-07'-05" W

S 17°-53'-21" W

S 83°-07'-05" W

FARM PLAT 2

375