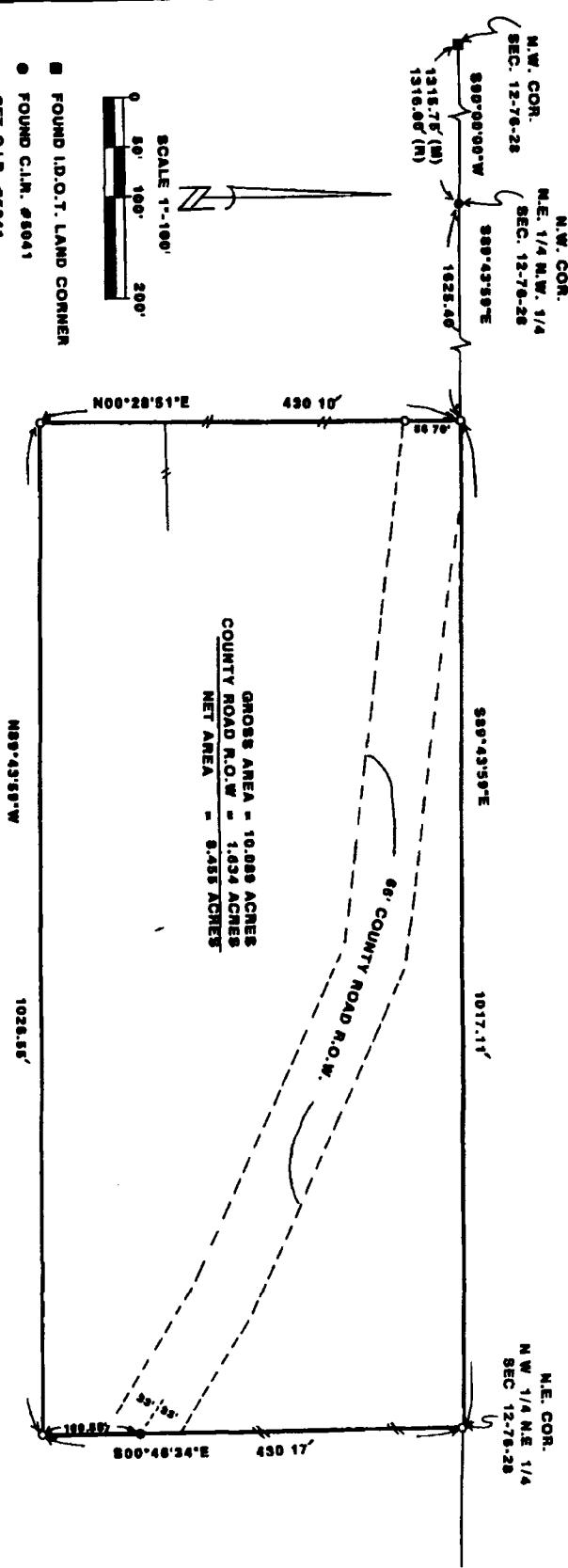
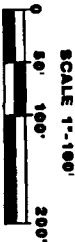


PLAT OF SURVEY FOR DENNY CRASE IN THE  
NW 1/4 OF THE NE 1/4 OF SECTION 12, T79N R28W OF THE  
5TH P.M., MADISON COUNTY, IOWA



GROSS AREA = 10,009 ACRES  
COUNTY ROAD R.O.W. = 1,634 ACRES  
NET AREA = 8,355 ACRES

- FOUND I.D.O.T. LAND CORNER
- FOUND C.I.M. #5041
- SET C.I.M. #5041
- EXISTING FENCE
- (N) RECORDED DIMENSION
- (M) MEASURED DIMENSION



DATE OF SURVEY  
APRIL 3, 1992



*Michelle Uffler*  
Surveyed and Platted on 7/16/1992  
Iowa State of Iowa  
Madison County, Iowa

**DESCRIPTION:**  
A parcel of land located in the Northwest Quarter of the Northeast Quarter of Section 12 Township 76 North, Range 28 West of the 5th Principal Meridian, Madison County, Iowa, more particularly described as follows:  
Beginning at the Northeast Corner of the NW 1/4 of the NE 1/4 of Section 12, T79N, R28W of the 5th P.M., Madison County Iowa, thence along the East line of the NW 1/4 of the NE 1/4 South 00°48'34" East 430.7 feet, thence North 89°43'59" West 1026.55 feet; thence North 00°28'51" East 430.10 feet to the North line of said NW 1/4 of the NE 1/4; thence along said North line South 89°43'59" East 1017.11 feet to the Point of Beginning said parcel of land contains 10,089 acres including 1,634 acres of county road right of way

COMPARED  
FILED NO. **505**  
BOOK 2 PAGE 331

92 AUG 24 AM 11:19  
MICHELLE UFFLER  
REGISTERED  
MADISON COUNTY, IOWA  
Fee \$5.00

VANCE & HOCHSTETLER, P.C.  
CONSULTING ENGINEERS  
71 JEFFERSON STREET  
WINTERSSET, IOWA 50273