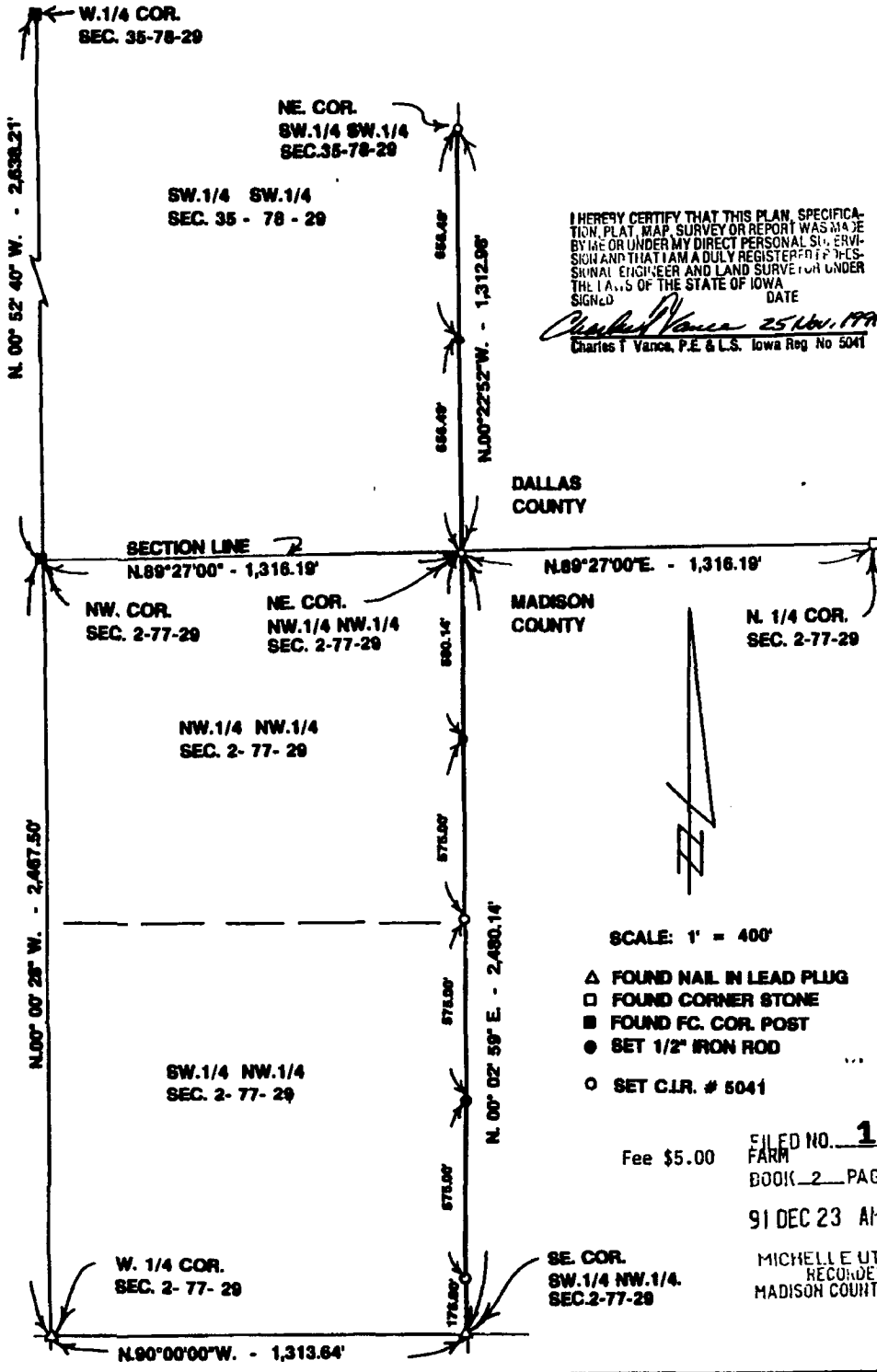


PLAT OF SURVEY MADE AT THE REQUEST OF
 MARK MARTENS OF THE EAST LINE OF THE SW. 1/4
 SW. 1/4 OF SECTION 35, T78N, R29W OF THE 5TH P.M.,
 DALLAS COUNTY, IOWA, AND THE EAST LINE OF THE
 W. 1/2 OF THE NW. 1/4 OF SECTION 2, T77N,
 R29W OF THE 5TH P.M., MADISON COUNTY, IOWA.



VANCE & HOCHSTETLER, P C
 CONSULTING ENGINEERS
 71 JEFFERSON
 WINTERSET, IOWA 50273