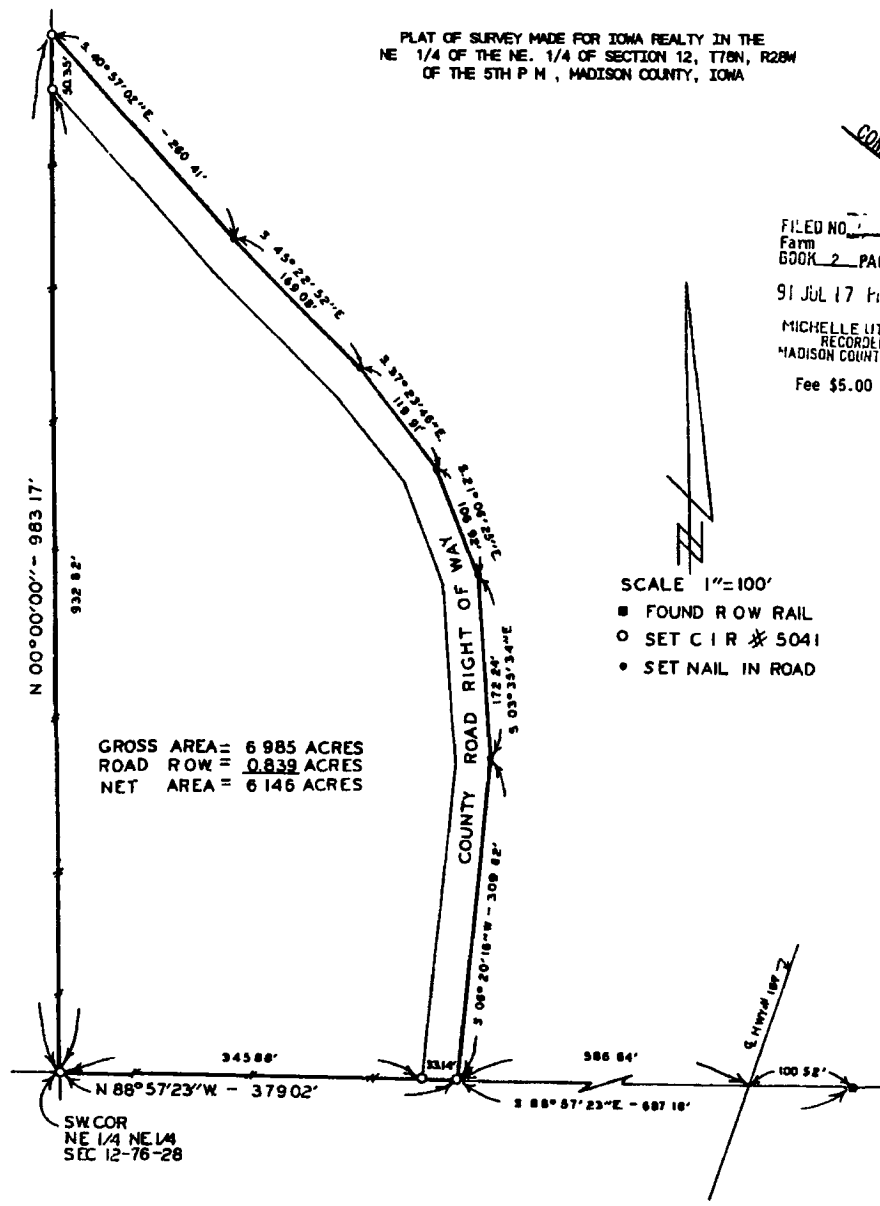


PLAT OF SURVEY MADE FOR IOWA REALTY IN THE  
NE 1/4 OF THE NE. 1/4 OF SECTION 12, T78N, R28W  
OF THE 5TH P.M., MADISON COUNTY, IOWA

COMPARED

FILED NO. **150**  
Farm  
BOOK **2** PAGE **255**  
91 JUL 17 P11 2 4J  
MICHELLE UTSLER  
RECORDER  
MADISON COUNTY, IOWA  
Fee \$5.00



GROSS AREA = 6.985 ACRES  
ROAD ROW = 0.839 ACRES  
NET AREA = 6.146 ACRES

SW COR  
NE 1/4 NE 1/4  
SEC 12-76-28

DESCRIPTION:

A parcel of land in the Northeast Quarter of the Northeast Quarter of Section 12, Township 78 North, Range 28 West of the 5th Principal Meridian, Madison County, Iowa, more particularly described as follows:  
Beginning at the Southwest Corner of the NE. 1/4 of the NE 1/4 of Section 12, T78N, R28W of the 5th P.M., Madison County, Iowa; thence along the west line of said NE 1/4 of the NE 1/4, North 00°00'00", 983.17 feet to the centerline of a County Road; thence along said centerline, South 40°57'02" East, 200.41 feet; thence South 45°22'52" East, 180.08 feet; thence South 37°23'48" East, 119.91 feet; thence South 21°00'25" East, 108.92 feet; thence South 03°35'34" East, 172.24 feet; thence South 06°20'18" West, 309.82 feet to the South line of said NE 1/4 of the NE 1/4; thence along said South line, North 88°57'23" West, 379.02 feet to the point of beginning. Said parcel of land contains 6.985 Acres including 0.839 Acres of County Road Right of Way

I HEREBY CERTIFY THAT THIS PLAN, SPECIFICATION, PLAT, MAP, SURVEY OR REPORT WAS MADE BY ME OR UNDER MY DIRECT PERSONAL SUPERVISION AND THAT I AM A DULY REGISTERED PROFESSIONAL ENGINEER AND LAND SURVEYOR UNDER THE LAWS OF THE STATE OF IOWA.  
SIGNED: *Charles T. Vance* DATE: *1 July 1991*  
Charles T. Vance, P.E. & L.S., Iowa Reg. No. 5041

VANCE & HOCHSTETLER, P.C.  
CONSULTING ENGINEERS  
71 JEFFERSON  
WINTERSSET, IOWA 50273 255

FARM PLAT 2