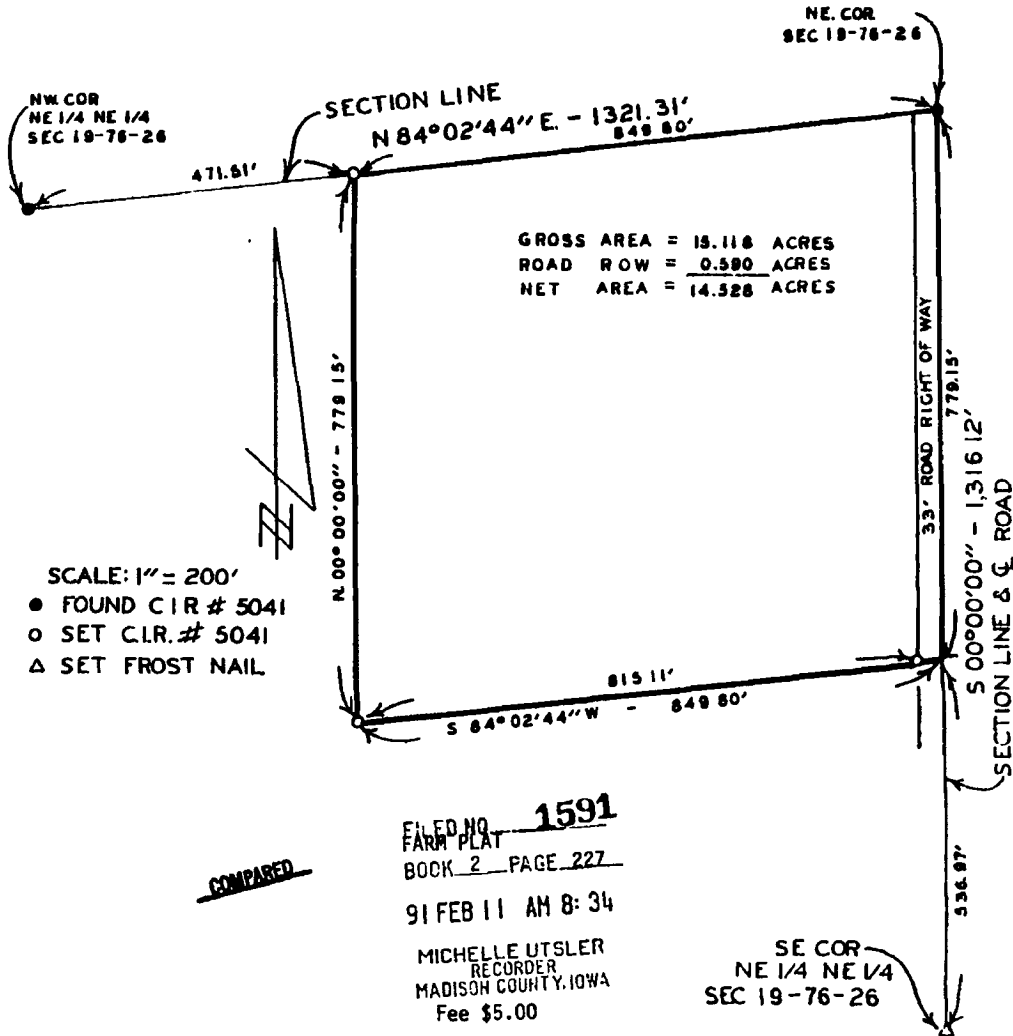


PLAT OF SURVEY FOR DALE FAUX IN THE NE. 1/4 OF THE
NE. 1/4 OF SECTION 19, T78N, R26W OF THE 5TH P.M.,
MADISON COUNTY, IOWA.



DESCRIPTION:

A parcel of land in the Northeast Quarter of the Northeast Quarter of Section 19, Township 78 North, Range 26 West of the 5th Principal Meridian, Madison County, Iowa, more particularly described as follows:

Beginning at the Northeast Corner of Section 19, T78N, R26W of the 5th P.M., Madison County, Iowa; thence along the East line of the NE 1/4 of the NE 1/4 of said Section 19, South 00°00'00", 779.15 feet; thence South 84°02'44" West, 849.80 feet; thence North 00°00'00", 779.15 feet to the North line of said NE 1/4 of the NE 1/4; thence, along said North line, North 84°02'44" East, 849.80 feet to the point of beginning. Said parcel of land contains 15.118 Acres including 0.590 Acres of County Road Right of Way.

I HEREBY CERTIFY THAT THIS PLAN, SPECIFICATION, PLAT, MAP, SURVEY OR REPORT WAS MADE BY ME OR UNDER MY DIRECT PERSONAL SUPERVISION AND THAT I AM A DULY REGISTERED PROFESSIONAL ENGINEER AND LAND SURVEYOR UNDER THE LAWS OF THE STATE OF IOWA.

SIGNED: *Charles T. Vance* DATE: *Feb. 1991*
Charles T. Vance, P.E. & L.S. Iowa Reg No 5041

VANCE & HOCHSTETLER, P.C.
CONSULTING ENGINEERS
71 JEFFERSON
WINTERSET, IOWA 50273