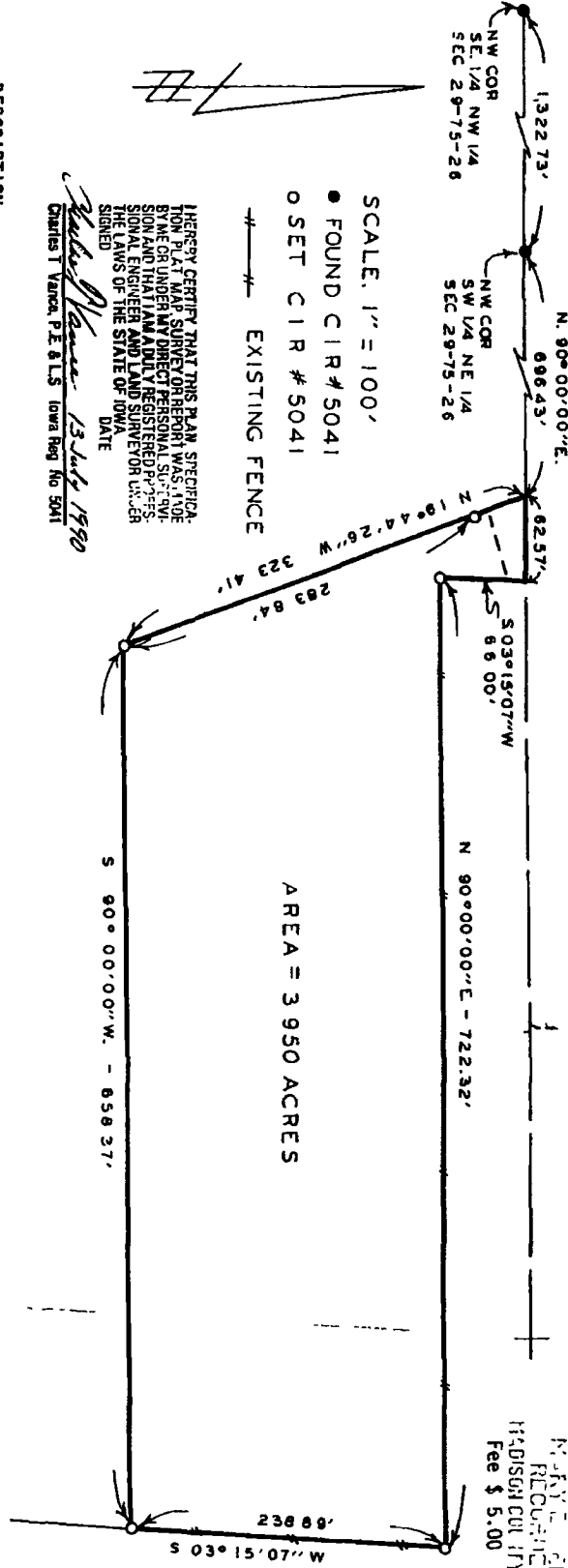


PLAT OF SURVEY FOR KEITH REYNOLDS IN THE S. 1/2 OF  
THE NE. 1/4 OF SECTION 29, T75N, R26W OF THE 5TH P.M.,  
MADISON COUNTY, IOWA.

FIELD NO. **429**  
BOOK 2 PAGE 216  
Farm Plat  
90 AUG 24 PM 12: 04  
MADISON COUNTY, IOWA  
RECORDING FEE \$ 5.00



SCALE: 1" = 100'  
● FOUND CIR # 5041  
○ SET CIR # 5041  
#—#—# EXISTING FENCE

AREA = 3 950 ACRES

HEREBY CERTIFY THAT THIS PLAN SPECIFIED  
FOR PLAT UNDER SURVEY OF SECTION 29, T75N,  
R26W OF THE 5TH P.M., MADISON COUNTY,  
IOWA, WAS PREPARED BY ME IN ACCORDANCE  
WITH THE LAWS OF THE STATE OF IOWA.  
SIGNED: *Charles T. Vance* DATE: **13 July 1990**  
Charles T. Vance, P.E. & L.S. Iowa Reg. No. 5041

DESCRIPTION:

A parcel of land in the South Half of the Northeast Quarter of Section 29, Township 75 North, Range 26 West of the 5th Principal Meridian, Madison County, Iowa, more particularly described as follows:  
Commencing at the Northwest Corner of the SW. 1/4 of the NE. 1/4 of Section 29, T75N, R26W of the 5th P.M., Madison County, Iowa; thence North 90°00'00" East, 696.43 feet, along the North line of the SW. 1/4 of the NE. 1/4 of said Section 29, to the point of beginning; thence continuing along said North line, North 90°00'00" East, 62.57 feet; thence South 03°15'07" West, 66.00 feet; thence North 90°00'00" East, 722.32 feet; thence South 03°15'07" West, 238.89 feet; thence South 90°00'00" West, 658.37 feet; thence North 19°44'26" West, 323.41 feet to the point of beginning. Said parcel of land contains 3.950 Acres.

VANCE & HOCHSTETLER, P.C.  
CONSULTING ENGINEERS  
71 JEFFERSON  
WINTERSSET IOWA 50273