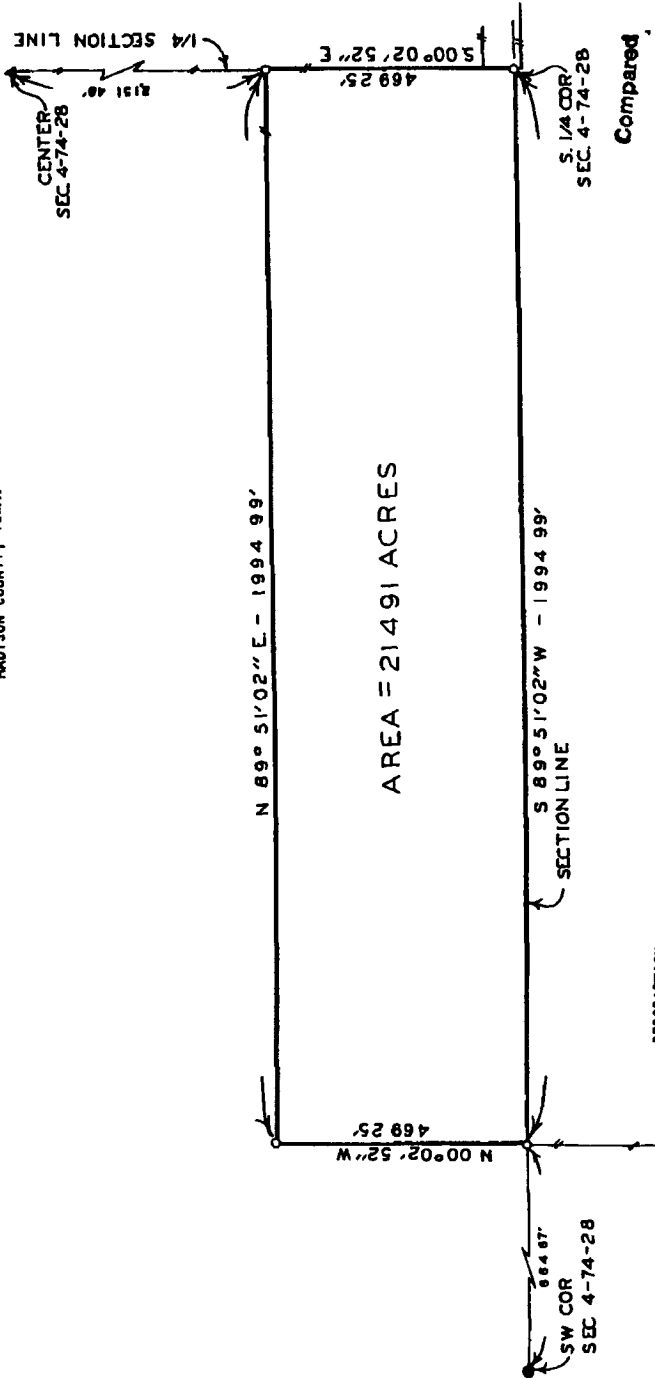


PLAT OF SURVEY MADE AT THE REQUEST OF BILL YAGER IN THE S 1/4 OF THE SW 1/4 OF SECTION 4, T74N, R28W OF THE 5TH P.M., MADISON COUNTY, IOWA.



AREA = 21.491 ACRES

DESCRIPTION.

A tract of land in the South Half of the Southwest Quarter of Section 4, Township 74 North, Range 28 West of the 5th Principal Meridian, Madison County, Iowa, more particularly described as follows.

Beginning at the South Quarter Corner of Section 4, T74N, R28W of the 5th P.M., Madison County, Iowa; thence South 89° 51' 02\"

LEGIBILITY OF THIS PLAT WAS MADE BY ME OR UNDER MY DIRECT PERSONAL SUPERVISION AND THAT I AM A DULY LICENSED PROFESSIONAL SURVEYOR IN THE STATE OF IOWA UNDER THE LAWS OF THE STATE OF IOWA.

DATE

1994

Garrett T. Vance, P.E. & S.E. Madison, Mo. 64701

VANCE & HOCHSTETLER, P.C.
CONSULTING ENGINEERS
WINTERSSET, IOWA 50273

- SCALE 1" = 200'
- ▲ FOUND WAGON AXLE
- FOUND C.I.R #6808
- SET C.I.R #5041
- EXISTING FENCE

FILED NO. 2661
 BOOK 2 P. OF 202
 FARM PLAT
 90 JUN 22 AM 10:32
 COUNTY OF MADISON
 REGISTERED
 HADSOH COOL 1X10" 1/4
 Fee \$5.00

S. 1/4 COR. SEC. 4-74-28

Compared

SW COR. SEC. 4-74-28