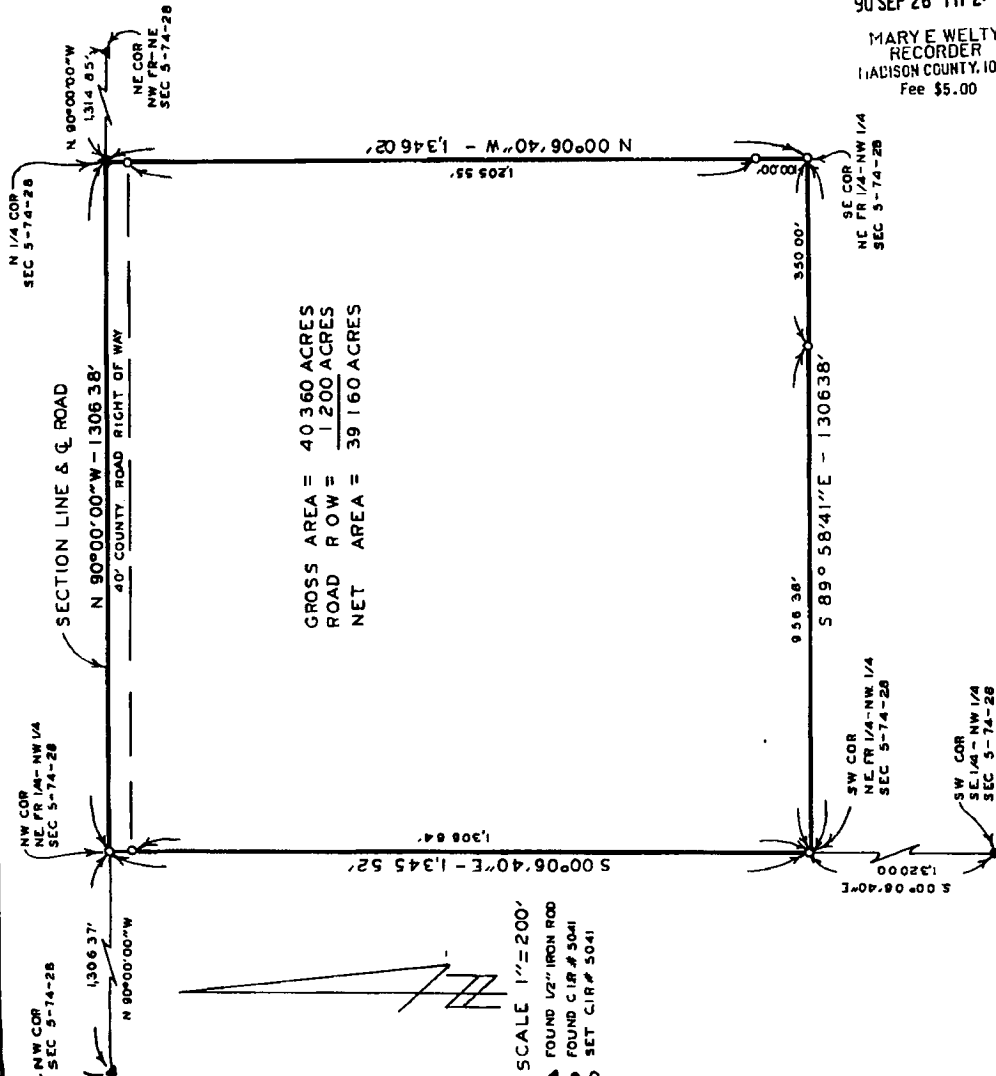


PLAT OF SURVEY FOR KENT FARM MANAGEMENT OF THE
NE FRAC 1/4 OF THE NW 1/4 OF SECTION 5, T74N, R28W
OF THE 5TH P.M., MADISON COUNTY,
IOWA.



GROSS AREA = 40.360 ACRES
ROAD ROW = 1.200 ACRES
NET AREA = 39.160 ACRES

DESCRIPTION

The Northeast Fractional Quarter of the Northwest Quarter of Section 5, Township 74 North, Range 28 West of the 5th Principal Meridian, Madison County, Iowa, more particularly described as follows

Beginning at the North Quarter Corner of Section 5, T74N, R28W of the 5th P.M., Madison County, Iowa, thence North 90°00'00\"

I HEREBY CERTIFY THAT THIS PLAN SPECIFICALLY REFERS TO THE MAP SURVEY OF SECTION 5, T74N, R28W OF THE 5TH P.M., MADISON COUNTY, IOWA, AND THAT I AM A duly REGISTERED PROFESSIONAL ENGINEER AND LAND SURVEYOR UNDER THE LAWS OF THE STATE OF IOWA.

Charles Y. Vance, P.E. & L.L. Iowa Reg. No. 5011

VANCE & HOCHSTETLER, P.C.
CONSULTING ENGINEERS
71 JEFFERSON
WINTERSSET, IOWA 50273

FILED NO. 210
Farm Plat
BOOK 2 PAGE 219
90 SEP 26 PM 2:14
MARY E. WELTY
RECORDER
MADISON COUNTY, IOWA
Fee \$5.00