

FARM PLAT 2

184

PLAT OF SURVEY MADE AT THE REQUEST OF IOWA REALTY  
IN THE NE.¼ OF THE NE.¼ OF SECTION 21, T74N, R26W  
OF THE 5TH P.M., MADISON COUNTY, IOWA.

FILED NO. **1702**

*Compared*

BOOK 2 PAGE 184  
FARM PLAT  
90 FEB 21 PM 1:39

MARY E WELTY  
RECORDER  
MADISON COUNTY, IOWA  
Fee \$5.00



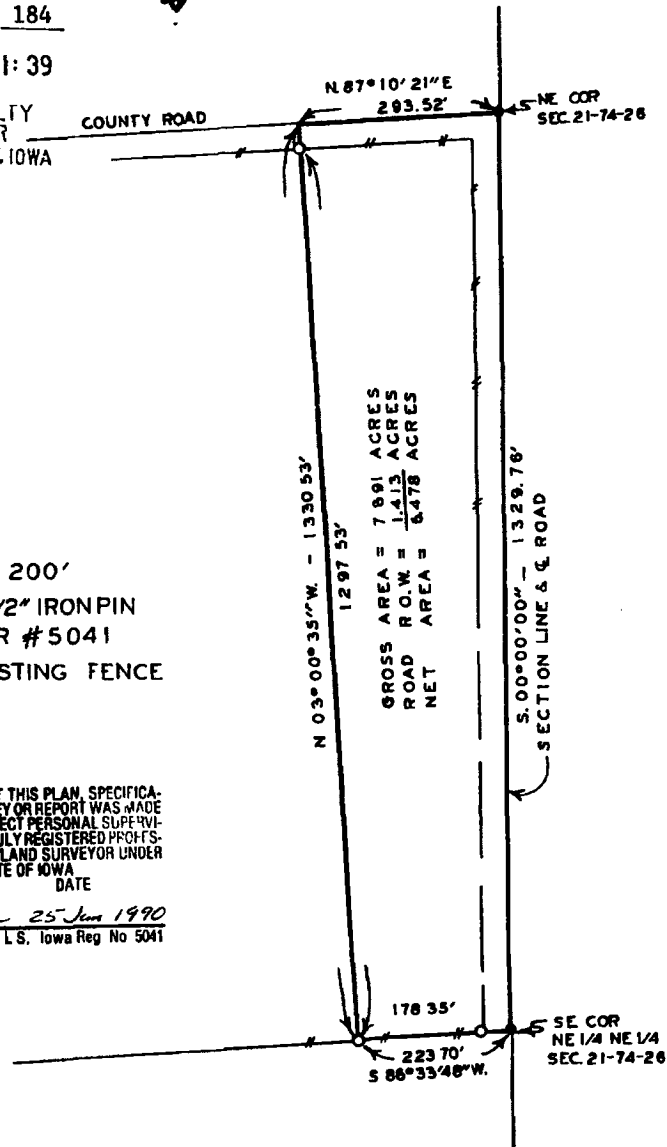
SCALE: 1" = 200'

- FOUND 1/2" IRON PIN
- SET CIR #5041

—#—#—# EXISTING FENCE

I HEREBY CERTIFY THAT THIS PLAN, SPECIFICATION, PLAT, MAP, SURVEY OR REPORT WAS MADE BY ME OR UNDER MY DIRECT PERSONAL SUPERVISION AND THAT I AM A DULY REGISTERED PROFESSIONAL ENGINEER AND LAND SURVEYOR UNDER THE LAWS OF THE STATE OF IOWA

*Charles T. Vance* 25 Jun 1990  
Charles T. Vance, P.E. & L.S., Iowa Reg No 5041



DESCRIPTION:

A tract of land in the Northeast Quarter of the Northeast Quarter of Section 21, Township 74 North, Range 26 West of the 5th Principal Meridian, Madison County, Iowa, more particularly described as follows:

Beginning at the Northeast Corner of Section 21, T74N, R26W of the 5th P.M., Madison County, Iowa; thence along the East line of the NE.¼ of NE.¼ of said Section 21, South 00°00'00" 1329.76 feet; thence along the South line of said NE.¼ NE.¼, South 86°33'48" West 223.70 feet; thence North 03°00'35" West 1,330.53 feet; thence along the North line of said NE.¼ NE.¼, North 87°10'21" East 293.52 feet to the point of beginning. Said tract of land contains 7.891 Acres including 1.413 Acres of county road right-of-way.

VANCE & HOCHSTETLER, P.C  
CONSULTING ENGINEERS  
71 JEFFERSON  
WINTERSET, IOWA 50273