

NW COR
SW 1/4-NW 1/4
SEC 26-74-27

PLAT OF SURVEY MADE AT THE REQUEST OF ROBERT McKEEVER
IN THE N. 1/2 OF THE SW. 1/4 OF THE NW. 1/4 OF SECTION 26, T74N,
R27W OF THE 5 TH P.M., MADISON COUNTY, IOWA.

FILED NO. **1356**

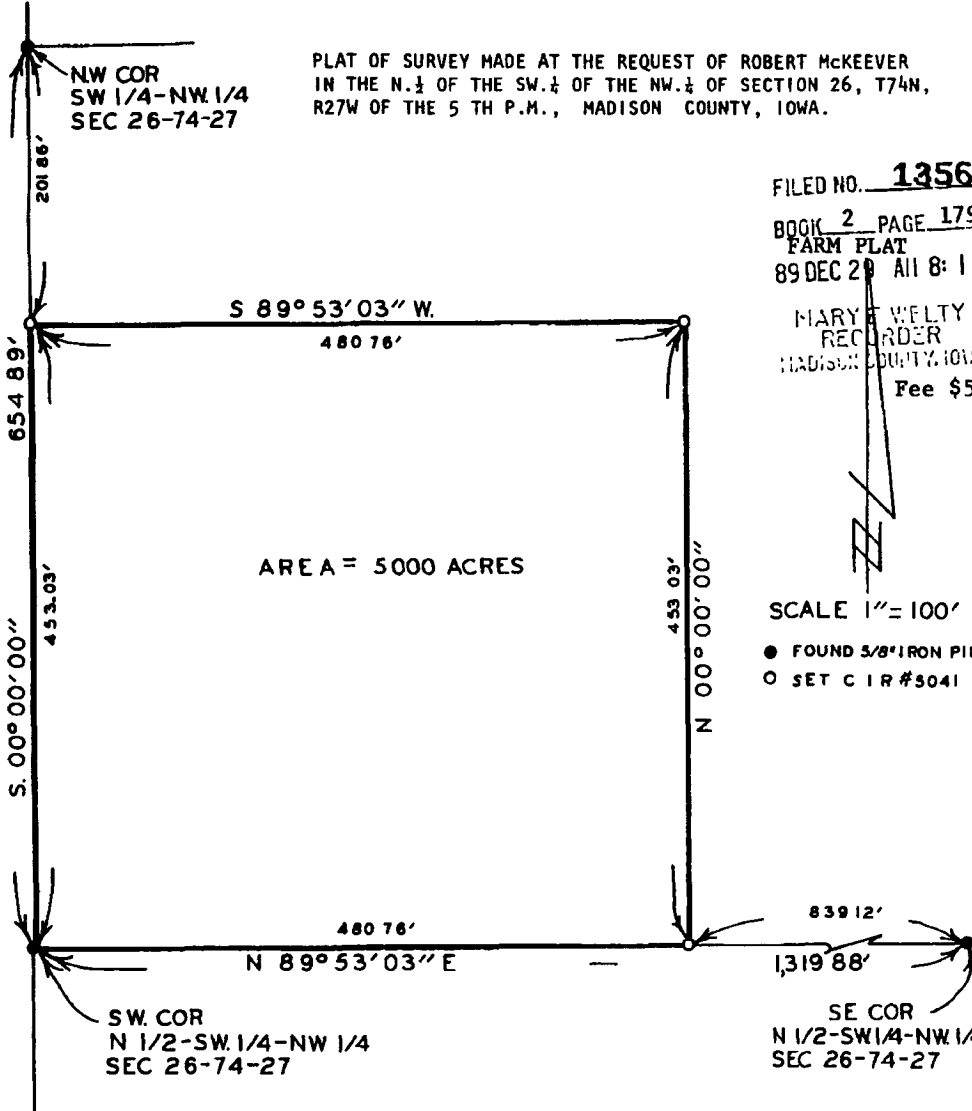
BOOK 2 PAGE 179

FARM PLAT

89 DEC 29 AM 8:11

MARY E WELTY
RECORDER
MADISON COUNTY, IOWA

Fee \$5.00



AREA = 5000 ACRES

SCALE 1" = 100'

- FOUND 3/8" IRON PIN
- SET C I R #3041

SW COR
N 1/2-SW 1/4-NW 1/4
SEC 26-74-27

SE COR
N 1/2-SW 1/4-NW 1/4
SEC 26-74-27

DESCRIPTION:

A tract of land in the North Half of the Southwest Quarter of the Northwest Quarter of Section 26, Township 74 North, Range 27 West of the 5th Principal Meridian, Madison County, Iowa, more particularly described as follows:

Commencing at the Northwest Corner of the Southwest Quarter of the Northwest Quarter of Section 26, T74N, R27W of the 5th P.M., Madison County, Iowa; thence along the West line of said SW. 1/4 of the NW. 1/4, South 00°00'00" 201.86 feet to the point of beginning. Thence continuing along said West line, South 00°00'00" 453.03 feet to the Southwest Corner of the North Half of said SW. 1/4 of the NW. 1/4; thence along the South line of said N. 1/2 of the SW. 1/4 of the NW. 1/4, North 89°53'03" East 480.76 feet; thence North 00°00'00" 453.03 feet; thence South 89°53'03" West 480.76 feet to the point of beginning. Said tract of land contains 5.000 Acres.

I HEREBY CERTIFY THAT THIS PLAN, SPECIFICATION PLAT, MAP, SURVEY OR REPORT WAS MADE BY ME OR UNDER MY DIRECT PERSONAL SUPERVISION AND THAT I AM A DULY REGISTERED PROFESSIONAL ENGINEER AND LAND SURVEYOR UNDER THE LAWS OF THE STATE OF IOWA
SIGNATURE DATE

Charles T Vance 28 Nov. 1989
Charles T Vance, P.E. & L.S. Iowa Reg No 5041

VANCE & HOCHSTETLER, P C
CONSULTING ENGINEERS
71 JEFFERSON
WINTERSSET, IOWA 50273