

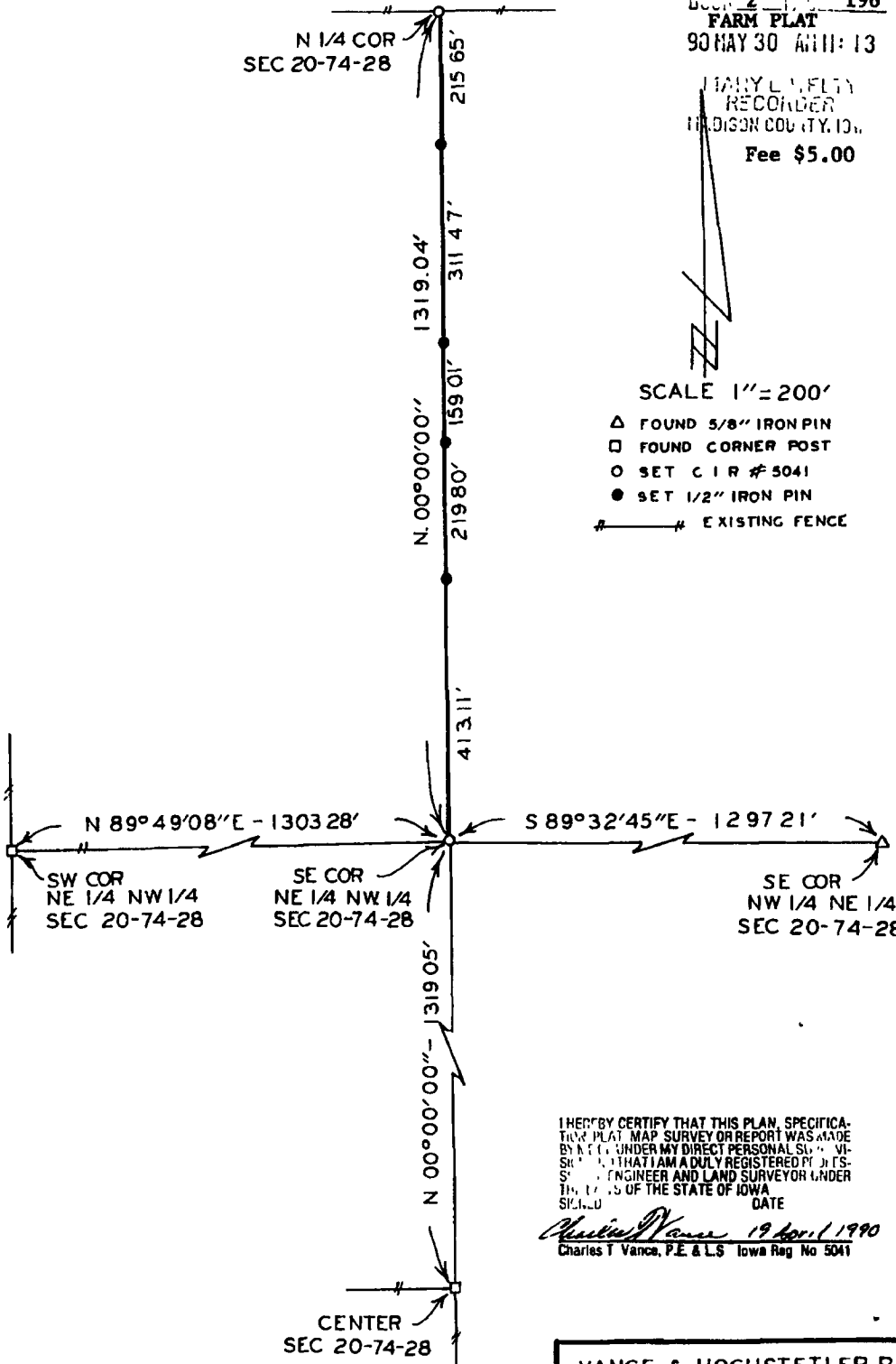
PLAT OF SURVEY FOR PAUL SHARP OF THE EAST LINE OF THE NE. 1/4 OF THE NW. 1/4 OF SECTION 20, T74N, R28W OF THE 5TH P.M., MADISON COUNTY, IOWA.

2463

BOOK 2 PAGE 196
FARM PLAT
90 MAY 30 AM 11:13

HARRY L. MELTY
RECORDER
MADISON COUNTY, IOWA
Fee \$5.00

Original



SCALE 1" = 200'

- △ FOUND 5/8" IRON PIN
- FOUND CORNER POST
- SET C I R # 5041
- SET 1/2" IRON PIN
- #—# EXISTING FENCE

I HEREBY CERTIFY THAT THIS PLAN, SPECIFICATION, PLAT, MAP, SURVEY OR REPORT WAS MADE BY ME OR UNDER MY DIRECT PERSONAL SUPERVISION AND THAT I AM A DULY REGISTERED PROFESSIONAL ENGINEER AND LAND SURVEYOR UNDER THE LAWS OF THE STATE OF IOWA.

SIGNED: *Charles T. Vance* DATE: 19 Apr. 1, 1990
Charles T. Vance, P.E. & L.S. Iowa Reg. No. 5041

VANCE & HOCHSTETLER, P.C.
CONSULTING ENGINEERS
71 JEFFERSON
WINTERSSET, IOWA 50273